



Parish Magazine

April 2019



Local Daffodils

Photo by Kate Pendleton

STaB is published by the Parochial Church Council and delivered free of charge to every home in Stratford Tony and Bishopstone. We hope you find it interesting and informative. Donations towards publication costs are always welcome. Donations should be made payable to Bishopstone Parochial Church Council and sent to:
The Treasurer, Bishopstone PCC, Ebble Cottage, Mill Lane, Bishopstone,
SP5 4BG. Please state on a cover note that it is for STaB.

The views in this magazine are not necessarily those of the PCC.

Editorial Team

Cally Edwards: 01722 780079

Kate & Robert Pendleton: 01722 780655

Lizzie Williams: 01722 780905

Please note our new e.mail address: **teamstab2019@gmail.com**

Advertising

Rachael Dew: 01722 780871

E.mail: **ads.stab@gmail.com**

Any articles for inclusion are to be submitted by 5pm on the 20th of the month to appear in the next issue. The editors reserve the right to edit all contributions.

A note from the editors...

It's been lovely to receive some letters to the editor this month, thank you to those who have contacted us. If there is a village issue that you feel strongly about, please do write in and tell us, it's great to get some discussion going.

We'd also love to hear from you if you have recently been to an event in the village and would like to give some feedback about it. Or perhaps there's someone who you think deserves recognition for their contribution to village life, particularly those who may work hard but go un-noticed and unthanked a lot of the time?

Do you have any ideas about something you could contribute to STaB? We were wondering if anyone would like to write us a monthly quiz for example. Let us know. We also love to see other parish magazines to give us ideas, so if you have one from somewhere else that you could pass on to us, we would love to see it.

And finally, hidden in this magazine are 6 rabbits, each holding a letter that they have stolen from a Bishopstone road sign. Can you find them all, and arrange their letters to spell out a word?



A warm welcome to...

Do you know anyone who has moved into the parish recently who hasn't yet been officially welcomed in STaB? Please let us know if so.



Hello from the Revd Canon Jenny Taylor



Lent has broken through into April already and we are marching steadily on our journey towards Easter! Thank you so much to everyone who supported our Lent event last month in aid of our Valley Lent Project for CRESS.

As we move through Lent this year we are, of course, journeying in the context of all that surrounds Brexit. Our futures are uncertain and I wonder whether that has made us think a little more about those refugees in the world whose futures are continually chaotic, uncertain and frightening. It certainly should do. Who knows what will happen next and maybe, by the time you are reading this things will have changed dramatically. These are the times when we need to hold fast to the truth of Jesus Christ; these are the times when we need to connect with one another more than ever; these are the times when we must remember that we have to journey through Good Friday before we arrive at Easter. But arrive we will and there before us will be the truth that has never failed and that always gives hope:

“I am the resurrection and the life, “says the Lord. “Those who believe in me, even though they die, will live, and everyone who lives and believes in me will never die.” John 11: 25-26

God of hope,
as you led your people through the wilderness,
guide us through the political confusions of these days,
that together we may live in harmony
and work for the good of all:
for the sake of Jesus Christ our Lord. Amen.

We look forward to celebrating Easter with you on Sunday 21st April!

Revd Canon Jenny Taylor

Chalke Valley Team Ministry - Parish of Bishopstone and Stratford Tony

Team Rector: The Revd Catherine Blundell 01722 780134

Team Vicar responsible for Bishopstone and Stratford Tony:

The Revd Canon Jenny Taylor 01722 503081

Church Wardens: George Brutton 01722 718539 Sarah Seal 01722 780305

Lay Pastoral Assistants: Sally Leaver 01722 780447 Sheila Nell 01722 781120

Team Administrator: Emily Broomhead 07890 262376

thechalkevalleychurches@gmail.com

The Friends of Bishopstone Church

If you would like to help the Friends of Bishopstone Church with their work of preserving the fabric of this beautiful building, please contact the Treasurer Norman Barter (01722 780471).



**St John the Baptist
Annual Parochial Church Meeting
Sunday 7th April, 11.45am
in Church after the Morning Service**

The Church's AGM for everyone living in the parish! An opportunity to hear what has happened over the past year and future plans and to ask your questions.

Preparation of new Church Electoral Roll for 2019

Every six years our church has to prepare a new Electoral Roll. This means that anyone wishing to be on the Roll, including those already on it, need to register again. Being on the Roll gives you a vote and voice in Bishopstone Church matters. Copies of the Roll Application Form are in the church and can be obtained from Anne Stutchbury our Electoral Roll Officer (01722 780339)

Easter at St John the Baptist, Bishopstone



Maundy Thursday

Thursday 18th April, 7.30pm
Commemoration of the Last
Supper Communion



Easter Day

Sunday 21st April, 9.30am
Parish Communion

David Leaver - A Tribute

As mentioned last month David Leaver lost his long valiant fight against illness in February. Below is part of the Tribute read at his Thanksgiving Service by Norman Barter.

David was born in Croydon on 28th May 1933. During the war the family moved to Lochwinnoch, south of Paisley, and after his parents separated, to Dollar with his mother and brother. David dreamt of becoming a farmer and spent two years at Edinburgh & East of Scotland College of Agriculture. He then completed 2 years National Service with the King's Troop (indulging another passion – horses!) After this he realised that his dream of becoming a farmer was not to be and he became articled to a firm of Chartered Accountants in London.

David and Sally married in 1960 and the family grew with the birth of Ian, Jane and Nigel. They moved to Bishopstone on the day that Nigel was born and have been active members of the Village Community ever since.

David worked for the NFU for 28 years – the next best thing to being a farmer! He was able to indulge his passions as a climber, a skier, a sailor and a horse rider and he and Sally enjoyed wonderful holidays together as well as walking days and weekends away with the Cathedral Strollers; a group they knew so well when he was a steward at the Cathedral.

Never one for sitting still, a few months after retirement David was appointed Finance Manager for the hospice. The nurses never allowed him to be miserable, and over the last two weeks of his life it was the nurses from the hospice who cared for him so lovingly and enabled him stay at home.

David was a quiet man, quite shy and thoughtful. He was a very good listener. When he did speak in conversation with others everyone would listen. He was wise and always offered his thoughts to be helpful. He served the village in various ways throughout his 52 years in Bishopstone. He always had the good of the village at heart whether it was the Church, (he helped to set up the Friends of Bishopstone Church), the Village Hall, the White Hart or his survey of the various footpaths whilst on the parish council. His wisdom, friendship and generosity of spirit will be greatly missed, not least by his three adored grand-daughters, Amy, Alice and Narissa.

David's son Nigel wrote: All 3 of us, and others I am sure, have benefited from having the opportunity to stand on the shoulders of a Giant. Dad was a beacon of integrity on how we should live our lives. He once explained to me that it was better to miss an opportunity than to make a mistake. Looking back I assume that this was meant for financial decisions in life but if it was broader he clearly didn't make a mistake in Mum. She was his greatest concern and we will look after her. Together they have established an amazing set of friends who will be like rocks for her. So with that - Dad, go, rest in peace.

Our love and prayers go to Sally and her family.



Parish Council

BISHOPSTONE ANNUAL PARISH MEETING

The Bishopstone Annual Parish Meeting for 2019 took place in the Village Hall on Thursday 14th March at 7.00pm. Sadly only half a dozen villagers were present to hear reports of activities during the past year provided by Mike Ash for the Parish Council, Kate Pendleton on behalf of the Trustees of the Rev Augustus Montgomery Coal Charity and the Bishopstone Playgroup, Sarah Seal, as Church Warden, on behalf of the PCC, Cllr Norman Barter on behalf of the Village Hall Management Committee and Cllr Ali Thorne on behalf of the BishBash Committee. Councillor Jose Green also gave us her latest update from Wiltshire Council. Notes on the reports submitted will be available on the village website (www.bishopstone-salisbury.co.uk).

No matters of general concern in the village were raised for discussion.

BISHOPSTONE PARISH COUNCIL MEETING

The March meeting of the Parish Council followed on from the Annual Parish Meeting. The minutes of the meeting are available on the village website (see above). The main issues discussed were:

- The refurbishment of the Children's Play Area. Following the discussion at the January meeting, the Clerk reported on the types of equipment that might make up a "play trail" (see example below). He had also met with the contractors who provided the play tower to discuss what might be possible. It was agreed that he should talk to a group of parents and carers from the village about which individual items of equipment to choose for our trail. He will report back in due course to Councillors with a draft grant application to South West Wiltshire Area Board.
- Salisbury Ladies Football Club. The club remains keen to use our football pitch for their home games and are now looking for funding to enable them to purchase temporary changing room facilities. It was hoped to get these in place in time for the start of next season, though time is now short given the need to obtain planning permission.
- Allotments. A new lease for the land at The Styles has been received from Wiltshire Council. This will enable the Parish Council to continue to sub-let allotments to villagers for 2019/20.
- The White Hart. Wiltshire Council has approved the application from the Parish Council for the White Hart to be included for a further period of five years on the list of Community Assets, thus safeguarding against any proposal by the owners, Ei Group plc, to dispose of the property for a non-public house use.

Questions were also raised about the availability of our local road gritting resource should Cllr Thorne not be available during periods of icy weather and about the Parish Steward service. The problem as regards gritting is that the equipment used is attached to Cllr Thorne's vehicles which are insured for him alone. However, he agreed to see whether there was scope for anybody else to use the grit "spinner". This could be used to grit the main road junctions, but only after any snow has been cleared. It was pointed out that we are lucky to have this facility – which is not available in other villages in the valley. Concern was expressed about the effectiveness and value for money of Wiltshire Council's Parish Steward service. It was felt that the stewards were not equipped or trained to deal adequately with problems that arose (eg. repairs to potholes that did not last long). It was agreed to take the matter up with Highways Officers.

The next meeting of the Parish Council will be on Thursday 9th May at 7.30pm in the Village Hall. All are welcome to attend.



Possible play area equipment.

BISHOPSTONE PARISH COUNCIL

Councillors	Telephone	
John Gibbon (Chairman)	01722 718551	
Ali Thorne (Vice Chairman)	07768514133	
Norman Barter	01722 780471	
George Brutton	01722 718539	
Anita Smith	01722 781213	
Piers Edwards	01722 780079	
Vacancy		
Parish Clerk		
Mike Ash Lower Thatch Flamstone Street Bishopstone	01722 781044 bishopstoneclerk@btinternet.com	
Further information in on the village website: www.bishopstone-salisbury.co.uk		

A Message from Councillor Green

It is now 10 years since Wiltshire Council (WC) became Unitary. Previously, it was Salisbury District Council who was the main point of contact for the services they provided. Now, it could be argued, it has been replaced by greater efficiency and joined up thinking (which in turn leads to savings and less bureaucracy) although this remains a matter of opinion!! 350 services are still provided by WC with social services being the greatest demand and rising as the population grows older, the number of vulnerable children that require looking after also increases year on year.

I'm sure many of you have noticed how much publicity Salisbury is receiving post the Novichok incident; with high profile visits from Royalty to Politicians. It all forms part of the Salisbury recovery programme which will bring tourists to visit and stay in and around the City. There are many events planned for this coming year but over the last year some very many memorable occasions took place.

Wiltshire Council has approved a 3% increase in the Council Tax (CT) for this coming year. This is the level of increase permitted without having to hold a referendum, every year it is a constant challenge to make savings at every opportunity sometimes at a cost to staff, providers and users. I accept that CT can be the biggest burden a household is required to find and it would appear, that as residents in rural areas, we do not receive the numerous services and easy access to facilities that others have; I must emphasise though, a balanced budget is imperative and that has been achieved again this year, also, it is the first time that WC hasn't been reliant on the Government's grant to achieve it.

There was a full and lengthy debate on Climate Change at Full Council last month revolving around what further measures can be taken to make the County progress towards becoming carbon neutral by 2030. This subject was partly brought about by the actions school students highlighted by going on strike and highlighted by the occasional very warm days in February thankfully followed by typical March weather. Last month I mentioned the investment WC is making by replacing the **street lighting to LED bulbs**, this coming year there will be many other measures introduced to reduce our carbon footprint, a few examples are pressing for **new eco 'built housing**, promote **car share**, encourage **electric cars by installing more charging points**, **address air quality and at every opportunity to educate and promote greater levels of reduce, recycle, and reusing our household waste**.

Every year I attempt to tell you what might be of the greatest interest to you rather than what might be the most relevant to the 14 parishes I represent. Looking to the future you might be aware of the proposals the **Local Government Boundary Commission of England** (LGBCE) have suggested in their review of the Wiltshire Divisions; although I didn't receive any direct representation from anyone about the consultation, WC has. The LGBCE accepts that Wiltshire Council retains the 98 Councillors but some boundaries will change so that each Division has an equitable number of electors, therefore there is a possibility that Coombe Bissett and Homington will come into Fovant and Chalke Valley and Compton Chamberlayne and Tollard Royal would move into Neighbouring Divisions as would part of Netherhampton into Harnham. We must wait to hear what the final outcome will be which will then come into effect in 2021. Whatever the proposals it is Parliament that confirms the final outcome not WC.

Highways; always the greatest concern to most remains a high priority. **The Speed Indication Scheme (SIDs)** the Area Board partly financed last year have proven to be popular, successful and effective. **The 20mph speed limits remain popular and a further 2 villages** will be chosen again this coming year in our area if the Parish requests it. A further £8 million from Government will be spent on improving the highways and street scene across Wiltshire, this is an additional sum above the £21m spent year on year in maintaining our roads, we must be sure the workmanship and quality is upheld.

The Centenary of WW1 was commemorated with the planting of 10,000 trees across Wiltshire. Not the tallest specimens but a lasting memorial to remember those 10,000 Wiltshire men who died during those war years. Again, I compliment the efforts of those who reinstated the Badges at Fovant, Sutton Mandeville and Compton Chamberlayne. The Armistice Day service on Compton Down was very moving.

Anyone reading my reports regularly will know I often mention the plight of the Syrian Refugees, It has been recently agreed that Wiltshire will take 10 vulnerable, unaccompanied children per year over the next 10 years dependent on having foster homes in place.

98% of Wiltshire's school children have been offered places in their preferred secondary schools. 93% were their parents first choice, up 1%. 4% attend their 2nd choice and 1% their 3rd, in total 4981 applications were received, (up 174 from the previous year) out of this figure 102 parents did not get an offer of their preferred school which is disappointing. Obviously, they have the right to appeal.

WC has a 'smoke free' policy in place on Council owned property. The 3 main Hubs have introduced it already which prohibits smoking in the grounds. Vaping is permitted by the public and staff outside but requested to do so away from the entrances of the buildings.

On a personal level I have remained Chair of the Area Board and vice chair of the Licensing Committee, I sit on the Southern Area Planning Committee, the School Transport Appeals Panel and the Environment Select, plus other commitments. I'm always happy to support grant applications and there have been a number of successful ones in my Division over the last year. My priority has always been to listen and hopefully help those who approach me with an understanding that by working together we can ensure the fairest and best outcomes for all.

Thank you.

José Green, Fovant and Chalke Valley Division

BISHOPSTONE PARISH COUNCIL – VACANCY

Bishopstone Parish Council is still looking for someone to join them as a Parish Councillor. If you care about the place where you live and the well being of others who live here, why not become a Parish Councillor? Being a Councillor is not onerous - the Parish Council meets six times a year and all you need is to have the best interests of the village community at heart.

If you are interested in joining the Parish Council and want to know more about what is involved please contact the Clerk, Mike Ash, on 781044 or by email to bishopstoneclerk@btinternet.com.

YOUR VILLAGE NEEDS YOU!

Village Hall

SPRING 2019 EVENTS



MOVIOLA at Bishopstone

Friday 26th April First Man (12A)
May 31st Title to be announced in the May edition
June 28th Title to be announced in the May edition
July 26th Film and BBQ

Tickets for all films £6, available from <bvhticketoffice@btinternet.com>
or from 01722 781044 or 780002.

Cash bar, snacks and ices available. Doors open 7pm.

BISHOPSTONE COMMUNITY LUNCHESES WITH SPEAKER

Wednesday 3rd April

Speaker Francis Taylor, Orangutans and dragons of Indonesia
To book, please phone 781044 or 780002, letting us know if you have any specific dietary requirements or need transport. Lunches cost £7.50 including a glass of wine or soft drink. Home cooked lunch is served around 12.30pm.

It also is planned to have a selection of old photographs of the village for viewing.

Note: This is the last Community Lunch for the winter season. The next one will be on **October 2nd**.

BISHOPSTONE COMMUNITY CAFE

These are normally held on alternate Thursdays. The next coffee mornings will be on Thursday 11th and 25th April. Held at slightly revised times this year, being 10.30am until 12.00noon. Everyone welcome to look in for a coffee and chat for just 50p.

BABY AND TODDLER PLAYGROUP

The playgroup meets on Friday mornings during term-time from 9.30 – 11.00am, Find our Facebook page *Bishopstone Playgroup*, or contact Kate Pendleton on 01722 780655 or email <kmpendleton@hotmail.com> for more details.

CANVAS AND CAMERAS

For information on meetings, please contact Roger Stockton on 780346.

“EXTEND” EXERCISE CLASSES Friday afternoons, 2-3pm

These seated exercise classes are aimed at people who would like a full body workout but prefer to feel stable. They give confidence to keep fit without fear of falling over, and are fun to do.

£5 per session, (apart from anyone's first free taster class).

Contact Jenny on 01722 780863, email < jennyberwynjones@yahoo.co.uk > or just turn up to any class to try it out. Jenny Berwyn-Jones is fully trained and insured.

BISHOPSTONE NEEDLES AND PINS CRAFT GROUP

Next meetings will be on **Thursday 4th and 18th of April.**

Bring any knitting, embroidery, quilting, tapestry or other hobby needlework, and enjoy a cup of tea and cake in Bishopstone Village Hall, only £2.50. Everyone is welcome. Call Caroline Ash on 781044 for information.

PILATES AT BISHOPSTONE

Contact Claudine on 07788 587937.

SPECIAL EVENTS

IMPROMPTU SHAKESPEARE: *“Bursting with love, poetry, comedy, tragedy, soliloquies, power struggles, mistaken identity and the supernatural, Impromptu Shakespeare buckle on the Bard's britches to bring you an entirely new and improvised Shakespeare play, based on audience suggestions”*

Friday 5th April, Doors open at 6.30pm for a 7.00pm start. Tickets, Adults £10, Concessions £8, Children £5 from bvhticketoffice@btinternet.com or 01722 781044. An optional quiche and salad supper will be available after the show for £6.00 (booked in advance along with the event ticket).

SPRING FAYRE

The annual Spring Fayre will be held on **Saturday 25th May.** There will be the usual stalls including a tombola. Always a success is the plant stall which is where to come for seedlings and herbaceous plants to enhance your garden, and to donate those which others might like to buy!

All in a good cause, donations to any of the stalls are very welcome.
Contact any committee member.

BISHOPSTONE LADIES GROUP

The meeting on Wednesday, 17th April is at Sue Taylor's when the title of Kathy McNally's talk is "Not for King and Country".

For more details about the group please contact Shirley Cooke on 780436

THE VILLAGE HALL COMMITTEE MEMBERS

Chairman - Norman Barter	780471
Treasurer - Francis Taylor	780316
Secretary - Ian R Smith	780425
Entertainments - Sue Taylor	780316
Event bookings - Caroline Ash	781044
Hall bookings - Margaret Barter	780471
Hall maintenance - Nigel Peasley	780713
Minute secretary - Virginia Middleton-Smith	780444
Member - Pat Abbott	780002

The Village Hall is an important resource and offers a venue for a wide variety of events for the benefit of all. The Hall is supported by a large group of dedicated local people in addition to the Committee. We hope you will support events whenever you can and if you would like to join the wider group of Friends of the Village Hall then please contact any member of the committee.

Bishopstone Village Website

www.bishopstone-salisbury.co.uk

The village website carries a wealth of information about Bishopstone. There are pages devoted to the church, the Parish Council, what's on at the Village Hall, meetings, clubs, local organisations and village walks. There are even digital copies of this magazine.

If you want to have any information included on the website please contact either

Mike Ash (bishopstoneclerk@btinternet.com)

Or Roger Stockton (rogerstockton@icloud.com)



Did you know that the Valley has its own Facebook page?



If you are on FB do join
Chalke Valley Families.

**If April showers should come your way, they bring the
flowers that bloom in May.**

Buddy de Sylva

Bishopstone Village Hall rates for private hire

Bishopstone Village Hall has 2 rooms that are available for hire for a wide range of functions. The larger room is ideal for children's parties with lots of space for running around. It can also accommodate wedding receptions, charity functions and large family celebrations.

The smaller room (The Memorial Room) is a good size for meetings and smaller gatherings.

The modern kitchen is spacious and fully equipped with an electric catering range, a professional 4 minute dishwasher, water boiler, hot cupboard, microwave oven, 2 fridges and a freezer, all suitable for professional caterers. There is also glassware, crockery and cutlery for over 80 people.

The hire charges include use of heating and electricity.

The rates are currently (January 2019):

	Villagers	Non Villagers
Hire of both rooms (With full use of the kitchen)	£15 per hour	£20 per hour
Hire of both rooms (With tea making facilities but no other electrical kitchen equipment)	£10 per hour	£15 per hour
Full use of the kitchen <u>only</u>	£10 per hour	£15 per hour
Weddings – per event/day	£150	£250
Parties – per event/day	£100	£150

Broadband.

An additional charge is made for use of the broadband connection of £6 per hour with a maximum of £25 per day.

Large projection screen

Use of this professional quality screen is charged at an additional £10 per event.

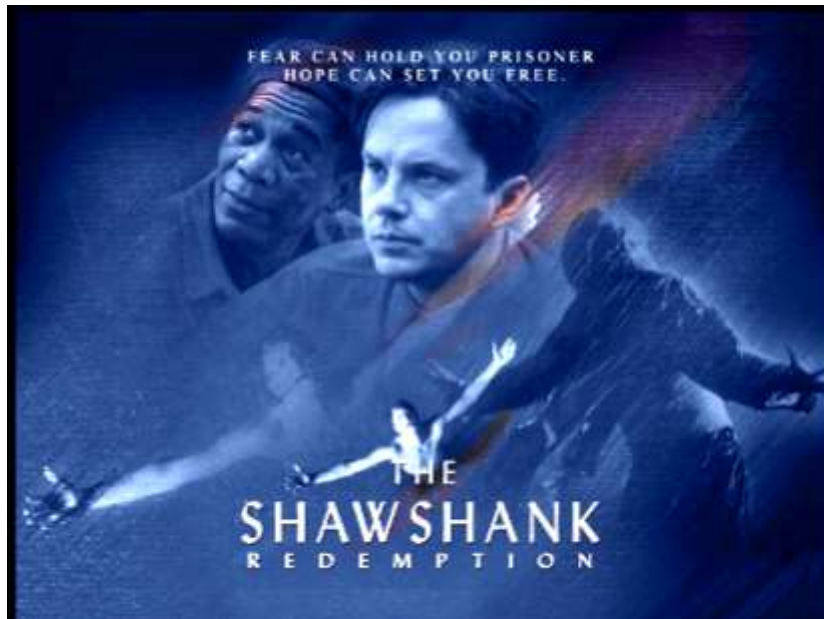
The hire period must include time to set up and clear away after the event.

For further information and bookings contact: Margaret Barter 01722 780471

BISHOPSTONE VILLAGE HALL
MAGIC LANTERN SOCIETY

FRIDAY 12th APRIL 2019
Doors Open 7.00pm, and the film starts at 7.30pm

THE SHAWSHANK REDEMPTION



The Magic Lantern Society will be showing this extensively digitally restored film.

The Shawshank Redemption is an adaptation of the Stephen King novella 'Rita Hayworth and Shawshank Redemption'. Starring Tim Robbins and Morgan Freeman, the film portrays the story of Andy Dufresne (Robbins), a banker who is sentenced to two life sentences at Shawshank State Prison for apparently murdering his wife and her lover. Andy finds it tough going but finds solace in the friendship he forms with fellow inmate, Ellis "Red" Redding (Freeman). While things start to pick up when the warden finds Andy a prison job more befitting his talents as a banker, the arrival of another inmate is going to vastly change things for all of them.

There was no fanfare or bunting put out for the release of the film back in 1994, Shawshank Redemption barely registered at the box office. However, come Academy Award time the film received several nominations, and although it won none, the rest, as they say, is history.

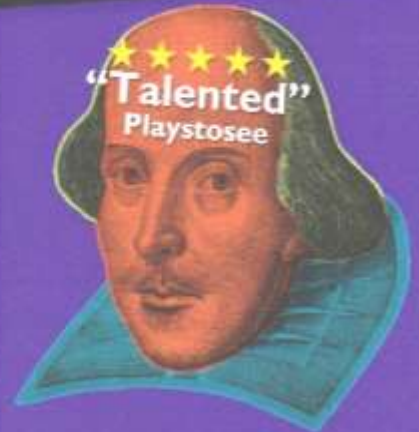
The film finally found an audience that saw it propelled to almost mythical proportions as an endearing modern day classic.

**This is an evening for all classic film enthusiasts.
Non-members welcome as guests.**

Phone 780346 or 781044 for membership

Buckling on the Bard's britches to improvise the plays he never wrote!

IMPROMPTU SHAKESPEARE



An improvised Shakespeare play based on your suggestions

'Shakespeare from the hip. Ingenious and very funny' **Will Gompertz, BBC Arts Editor**

Bishopstone Village Hall, SP5 4AA

FRIDAY, APRIL 5th

Doors 6.30pm for 7.00pm start

Tickets: 01722 781044 / bvhticketoffice@btinternet.com

Ticket prices £10, £8 and £5. Supper available £6. Cash bar!

Pound
Arts

www.impromptushakespeare.com

Bishopstone Rugby Enthusiasts



THE END OF SEASON

The 6 Nations Rugby has been a real feast of entertainment this year. As at 10 March the competition was still neck and neck with three teams, England, Wales and Ireland all in the running. The last weekend turned out to be a very dramatic finale to the competition, with our sole Wales supporter in ecstatic mood.

Thank you all for your support this season. We hope that the Rugby World Cup and 6 Nations 2020 will be more favourable for the many England supporters,well we can but dream.

The attendance at all of the England games raised a total of £ 395.00 for the Rugby Enthusiasts and of this £100.00 was donated to CRESS. The remainder was donated to the Village Hall, with the express wish that the funds should be used to assist in enhancing the car park surround to protect the borders.

The organising team are delighted to clarify that the following games in the Rugby World Cup, which runs through October into early November will be screened in the village hall:

12 October	09.15	England v France	Yokohama
26 October	09.00	Semi-final 1	Yokohama
27 October	09.00	Semi-final 2	Yokohama
2 November	09.00	Final	Yokohama

Obviously at this stage we do not know who will be playing in the semi-finals or final but we can but hope that England will be involved.

Normal refreshments will be provided, so we hope you like bacon, sausages and beer for breakfast!

Chalke Valley Community Support



The Chalke Valley Link Scheme exists to provide transport and other good neighbour support in a local, personal and friendly way to members of the Chalke Valley community who need it.

If you live between Bishopstone and Bodenham or Britford and need help getting to your surgery/hospital appointments, local shopping, or to visit family members in hospital, please phone **01722 718780** to reach our Joint Transport Coordinators (Anna Mynott, Debby Underhill or Roger Brown who will be on duty in rotation).

There is no charge but you are invited to make a donation towards our administrative costs. Our co-ordinators are all volunteers and there may be occasions when you will be asked to leave a message which will be answered as soon as possible. Our drivers are volunteers too, so please give as much notice as possible so that we can find a volunteer who is available.

Registered Charity No 1076335

Queen's Award for Voluntary Service

POLICE

Call 999 in an emergency: an emergency is when someone is being threatened or at risk of getting injured, or a crime is in progress.

Call 101 for non-emergencies: such as reporting a crime that has already taken place, non-urgent incident, contacting local officers etc

You can also contact local Police as follows:

PCSO Nicola CLARK – nicola.clark@wiltshire.pnn.police.uk

PC Matt HOLLAND – Community Policing Co-Ordinator

CPTSouthWiltshire@wiltshire.pnn.police.uk

Community Messaging – for emailed crime reports and local policing updates, sign up at www.wiltsmessaging.co.uk

Social media – for local policing updates follow us on Facebook **@salisbury** and Twitter **@SouthWiltsCPT**



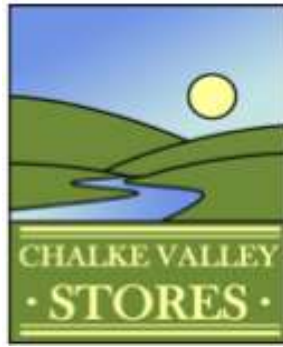
Sixpenny Handley and Chalke Valley Practice

Doves Meadow Surgery, Broad Chalke: 01722 780282

Sixpenny Handley Surgery: 01725 552500

www.sixpennydocs.co.uk





**A UNIQUE OPPORTUNITY
TO MANAGE AND DEVELOP THE AWARD WINNING
CHALKE VALLEY COMMUNITY SHOP, COFFEE SHOP AND POST OFFICE;
KNOWN LOCALLY AS THE “HUB”**

A vacancy has arisen for the position of General Manager at this community owned, busy general store, post office and coffee shop at the centre of the beautiful Chalke Valley, which serves not only Broad Chalke but all the surrounding villages from Bishopstone to Berwick St John.

The HUB provides a welcoming and convenient place for the residents of the Chalke Valley and its many visitors, to shop, eat, socialize and relax in a friendly and safe environment. This is made possible by the combination of its professional management together with over 70 supportive volunteers who give their time freely and help create the atmosphere for which the HUB has become well known since it opened nearly six years ago.

The successful candidate must have:-

Management and leadership experience

Strong interpersonal skills

Results driven mindset

Competent negotiating ability

Commercial skills

Retail and customer service experience

Good organisation skills

Up to 40 hours pw, paid holiday, pension scheme

If you have the capability and enthusiasm to make your mark in this thriving community please visit:

<http://www.chalkevalleystores.co.uk/hub-manager-application/>

for more information about the HUB and where you will be able to download an application form together with a more detailed job specification.

Closing date for applications is 5th April 2019

SIDELINES

Well, March came in like a lion without any doubt. I think we are all pleased that the gales have dropped and a bit more sun and calm is abroad. With all the daffodils and flowers showing, perhaps spring has arrived. The buds on the prunus and the flowers on the greengage tree are a welcome sight. Maybe, March will leave as a lamb.

A great start to Lent this year, with such a choice of things to attend, or talks and services, that it is hard to choose where to go. The Coffee Morning in the Village Hall on 16th March was a great success and well attended. The cakes got a hard assault, and few were left at the end! We hope that CRESS benefitted from our generosity.

It is a good time to remember all those Sudanese refugees in northern Uganda, and the help they receive from CRESS and from the Benefice. If you have not been there, it is hard to understand the poverty they live in. I visited Arua in north west Uganda long ago, when there was an internal civil war under way. There was no running water and no power in our hotel, but there was plenty of Congo beer to be had in the local! Despite the situation, the locals were so very welcoming and warm, and I am sure the folk from Sudan are just the same now. Don't forget them, as we go about our daily lives. Theirs are so much harder.

At least this year we have not been flooded, even though buffeted by storms, and with plenty of rain. We must look forward to summer with optimism and hope for good times, good holidays, and big harvests. Let's look forward with hope and confidence to a long, hot summer, and try to forget Brexit and parliament for a while!

James T

Chalke Valley Flower Club

On Wednesday 24th April we are

Looking forward to welcoming

Carol Stables

Carol is an Area Demonstrator and is presenting

'Wedding Wonders'

7pm in Broad Chalke Village Hall

Another Competition tonight, this time for the O' Connor Cup,

This is a photographic competition entitled, 'A TREE'

Please come and Join us you will be warmly welcomed

~~~~~

As you may know we arrange Wedding Flowers for local lucky brides to be. All we ask is the cost of the flowers plus a small donation to our chosen charity.

~~~~~

Looking forward to 7pm on Wednesday May 22nd

Carol Norman will present, 'Two of a Kind'

Coombe Bissett Primary School needs your help!

We will be holding our School Summer fete on Friday 14th June 2019. As part of the fund-raising efforts we will be hold a grand prize draw, for which we are seeking donations of prizes. Can you or a business you know offer a prize for the raffle? Our last event saw prizes such as meals for 2, family days out and even a weekend away! Funds raised will be put towards developing a sensory garden and outdoor learning space to be used by the children and wider community. If

you are able to help please contact Becky Poole on

rpoole@coombebissett.wilts.sch.uk



WILTSHIRE MOBILE LIBRARY

The mobile library will be visiting **The Styles** in Bishopstone on the following dates, arriving at 1115 and departing at 1135:

Thursday 18 April, 2019

Thursday 16 May, 2019

Thursday 13 June, 2019

Thursday 11 July, 2019

Thursday 08 August, 2019

Thursday 05 September, 2019



The Trussell Trust

February total was 24.8 kgs so again I thank those of you who continue to support this charity.

Again their main concern at the present time is a shortage of **Long Life Fruit Juices** and **Milk**, so if you could include these in your donations they would be very grateful.

Tinned meat and **tinned vegetables** are also badly needed as are **personal hygiene products**. **Chocolate** and **chocolate biscuits** are good treats for families who have little. **Granulated sugar**, **tinned puddings** and **tinned fruit** are also always welcome.

Thank you again to the anonymous donors who have left items on my doorstep.

As usual, donations can be left in the box in the church porch or at The Old Post Office, The Cross. Either ring the doorbell or leave them on the step. If you cannot get them to either drop off point then please phone me and I will arrange to collect at your convenience.

Thank you again for your continued support.

Regards

Judy Barrett



How The Trussell Trust Works

Each Food bank works with different front line professionals, such as doctors, health visitors, social workers and the Citizens Advice, who make referrals to the food bank using a voucher.

The food bank and referral agency use the voucher to gather some basic information. This will help them to identify the cause of the crisis, offer practical guidance and prepare suitable emergency food.

Once a person is referred, they can bring the voucher to their nearest food bank centre, where it can be exchanged for a parcel containing a minimum of three days nutritionally balanced food.

Meeting your needs

To make sure that they are provided with a suitable food parcel to meet their needs, they will first be asked for their Food Bank voucher. The volunteers will use the voucher to check the number of adults and children shown, the ages of children and any special dietary requirements they may have.

Preparing your food parcel

Whilst the food parcel is being prepared, they will be offered a warm drink and a biscuit. A volunteer will have an informal chat with them about their situation and, as appropriate, signpost them to further support.

The food will be packed into supermarket carrier bags, which the food bank can supply, or if preferred the client can bring their own to be used instead.

What's in a food parcel

A typical food parcel will include: cereal, soup, pasta, rice, tinned tomatoes/pasta sauce, lentils, beans and pulses, tinned meat, tinned vegetables, tea/coffee, tinned fruit, biscuits, UHT milk and fruit juice.

Many food banks also provide essential non-food items such as toiletries and hygiene products.

Practical guidance and support

Food bank volunteers are driven by love, compassion and the willingness to help. It is their aim to take the time to listen and make clients feel supported during their visit to the food bank. They are specially trained to identify and offer practical guidance to help tackle the underlying cause of the referral to the food bank and will work with them to make sure they have access to appropriate support.

To be continued...

This years **Great Chalke Valley Duck Race** will be at Longbridge Field, Broad Chalke at 10.30am (race at 12 noon) on Sunday 19th May. Come along for a morning of family fun and to celebrate 30 years of Chalke Valley Playschool. See our Facebook page Chalke Valley Playschool & website for more information (www.chalkevalleyplayschool.co.uk). Entry to event is Free. Ducks £1 from local outlets and on the day. Top prize £75.



Tales from the Time Capsule

In April 2018 George Brutton, one of our churchwardens, discovered a Smiths Crisps tin box carefully wrapped in a plastic sheet and fastened with wire to a roof timber in Bishopstone Church. The box turned out to be a time-capsule, created we think in 1963 (some items date back to 1954), with other things added from various years up until the 1980s. Each month in STaB we will be showing you a few pieces of interest from this fascinating time capsule.

BISHOPSTONE with STRATFORD TONY.

Thank you all for a splendid Easter, and above all, thank God.

The Churches were beautifully decorated and well attended.

The severity of the past winter has brought with it much sickness, sorrow, and death so it was good to rejoice once more at Easter-tide. How do people manage who are without the solace of our sure hope?

We thank Doctor Brown, so ably supported by Nurse Habgood for all they do for us.

As I visit the sick; often I hear of their sympathy, kindness and help and I would like them to know of our gratitude.

We are grateful to an anonymous donor for a splendid oak door and linoleum for the Vestry.

The Elections. We are confronted with a Local and a General Election.

As I see things (before any political party has presented us with a programme) the supreme issue before us is that we might learn the way to live in this "Atomic age".

Politicians call this "Co-existence".

To exist is to have a place in the domain of reality. Slugs and swallows exist, as we all do, under specified conditions, but the conditions under which we men must live today demand the very highest moral virtues.

Our domain of reality is the Love of God and all our doings without His Love are worthless.

The way the good Lord Jesus taught us to live and the God given power to live that way is the only hope for the world.

Face this fact and vote in these Elections for the candidates who will most surely promote peace on Earth and good will amongst all men.

South Wilts Church Magazine, from May 1955, talks of how beautifully Bishopstone Church is decorated for the season. I'm sure that if you pop into the church over Easter 2019 you will see the very same thing. Huge thanks to those in our local community who give up their time to decorate our church throughout the year.

Another thing that seems not to have changed is the political turmoil we find ourselves in in this country. In 1955 the main concern was the burgeoning nuclear age, today it's Brexit, but I'm sure that we are all continuing to pray for 'peace on Earth and good will amongst all men'.

Speech Day adieu to Head



Some of the parents and children who attended Bishopstone Church of England Speech Day and prizegiving on Friday. The children also said goodbye to their headmistress, Mrs. W. S. Seager, who is retiring after 28 years, at the end of the term.

July 1963 and Bishopstone School bids farewell to its Headteacher, Mrs Seager. I wonder if any of the children in this photograph are still resident in Bishopstone today? We would love to hear from you if so; indeed we would love to hear of any memories that you might have of the school if you were a pupil or teacher there. Please write to the editors if you would like to share them.

Thanks to Anne Stutchbury who let me know that the mystery organist pictured in last month's STaB is Frank Gulliver. On a personal note I was interested to hear that the Gulliver Family lived in Bramley Cottage, now my house, and Anne sent me this photo of - she thinks - Frank's father William and his horse Nelson outside Bramley Cottage.



Anne has also found out that the band members are Steve Thorne, Jo Thorne and Peter Coombes (the 4th is still unnamed) and one of the ballerinas is Elizabeth Scott who used to live next to the church.

Village Memories - James McClelland

A familiar face around Bishopstone, here are some memories from our local postman.



MEMORIES OF MY TIME WORKING AS POSTMAN FOR BISHOPSTONE

I have been the Bishopstone postie for about 15 years now. It's been brilliant as, before I moved to Salisbury, I was a postie in Clapham, London SW4. Most of the deliveries there were on council estates with lots of floors and stairs. So it's nice that there aren't any 5 or 6 storey buildings in Bishopstone. One of my early memories delivering here, is a time when I got to a house and there was a builder holding on to a chimney. The lady downstairs was looking worried and asked me if I could help. It turned out that the builder needed a wedge to put under one side of the chimney to keep it up and stop it from crashing down, but the wedge was on the roof on the other side of the chimney and he couldn't let go. So I had to climb up a ladder onto the roof, then another ladder along the roof to get the wedge and hand it to the builder, who put it in place and that saved the day - he he.

HAVE YOU ALWAYS LIVED IN SALISBURY?

My family moved to Salisbury at the end of 1999. Before then we lived in London. I actually grew up in Stockwell, London SW9. When I left home I became a bit of a London nomad, living all over the place. I settled down when I met my wife, Sarah, living in Fulham and West Kensington. We came to Salisbury because we wanted somewhere to bring up our newly born son which was better and safer. Sarah originally comes from Salisbury.

SCHOOL

I went to Stockwell Manor School in London. We had a famous maths teacher who actually wasn't well known at the time, but made it big when he left. He was Brian May, who of course was in the super rock group, Queen. In one of his autobiographies he was actually quoted as saying that the pupils were crazy and that he found the school rough - LOL.

WORK

When I left school I did a variety of training schemes. I worked in a garage, I was a plumber's mate and an engineer. I was even working as a DJ in a local pub. I settled down as an apprentice electrical and electronic draughtsman, but the company that I was with moved out of London to Sussex and I decided to give it up. Then in 1984 I joined the Royal Mail at the big mail centre in Nine Elms London. Royal Mail taught me to drive and they sent me to a smaller office in Clapham. Then I came here to Salisbury 14 years later.

HOW DID YOU MEET YOUR WIFE?

Whilst working as a postie I was also working as a roadie for a rock covers band called Paddy goes to Holyhead. It was at one of the gigs that I met my wife Sarah. We got talking and the rest is history.

WHAT ARE YOUR HOBBIES OR PASTIMES?

I am a first degree black belt in Taekwondo and Kickboxing. Although I stopped training a few years ago now, as I found it was taking up too much of my time at home in the evenings. I was an assistant instructor in Taekwondo and instructor in Kickboxing. I also love football and international rugby.

WHAT WAS YOUR FAVOURITE HOLIDAY?

Oh gosh, my favourite holiday was only last year in February. Sarah and I went to Australia via Hong Kong. Hong Kong was an amazing cultural experience. In Australia we did so much, climbing the Sydney Harbour Bridge, Ayers Rock at night, zip wired through the rainforest, mingling with koalas and kangaroos, etc.

YOUR FAVOURITE BOOK?

I don't have a favourite book, but I like reading serial crime books by Martina Cole.

YOUR FAVOURITE MUSIC?

I'm mainly into rock music, and my favourite band at the moment is a local-ish band Saints of Sin. Sarah and I follow them everywhere - LOL. I try and keep my choice varied from The Carpenters, Elvis to even rap music. Life is boring if you just keep to liking one genre of music.

ANY REGRETS IN YOUR LIFE?

No real regrets except that I wished Sarah and I could have moved to Australia earlier in our lives. We actually got married there many moons ago.

ANYTHING YOU HAVE ON YOUR BUCKET LIST?

I'd love to go to Norway to see the Northern Lights. Also would love to do a trip to San Francisco and Las Vegas in USA.

IMPORTANT THINGS YOU'VE LEARNED IN LIFE

To always smile – a smile will get you a long way in life.

April weather, rain and sunshine both together.

English Country Saying

Recipe of the Month

Hot Cross Bun Bread & Butter Pudding by Cally Edwards

A fantastic way to use up hot cross buns. Family friendly, easy to make and a reliable recipe that you can alter to add more mixed fruit, raisins or maybe even some leftover chopped up Easter eggs. If you don't want to make your own custard, a good quality shop bought fresh custard is just as effective.

Serves 6

Ingredients

4-5 hot cross buns (depends on the size of your dish and how packed you want to make it)

Marmalade

Butter

1 orange, zested

250ml full fat milk

300 ml double cream

3 whole eggs, plus 1 egg yolk

1 tsp vanilla extract

3 tbsp golden caster sugar



Method

Slice open each bun and butter and marmalade each slice thoroughly.

Cut each slice into 2 triangles.

Lay the triangles overlapping in your oven proof dish with the peaks at the top like a mountain range.

If using mixed fruit or chocolate bits, mix in now and sprinkle over the buns as you overlap triangles.

Grate the orange zest over the top.

To make the custard, heat the milk, cream together in a saucepan to just below boiling point. Meanwhile whisk the eggs and yolk with the caster sugar in a jug.

Slowly pour the warm milk mixture and vanilla extract, over the eggs, stirring constantly until smooth.

Pour the custard over the buns so that the whole dish is covered and the custard flows into the spaces between all the hot cross bun triangles and around the sides and covers the whole dish except for peaks of bun poking through.

You can let the custard sit on the buns for up to an hour letting it soak in.

Bake in a 180°-200°C oven for 25-35 mins until the top is crunchy, golden and puffed up and the custard still has a gentle wobble. Serve warm.

Nature Notes

Bishopstone's Mute Swans

A familiar sight on the Bishopstone Lakes are a pair of mute swans, who appear to have made this area their home. This type of habitat, with its shallow, uncontaminated water, forms a perfect breeding territory for these birds, which usually mate for life. The fact that the lakes are not generally fished helps a lot, as they don't like to be disturbed. It would be normal for a single pair to nest in an area such as this, with the nest site being chosen by the female and defended by the male. Nest-building usually begins in mid April and can take a couple of weeks, with the female laying eggs from late April to June. Keep an eye out this month for signs of this nest-building activity. The island on the lake is a perfect place. Do let us know if you spot the nest and send us a picture (but use a long lens!)



Bishopstone's pair of mute swans

The first of April is the day we remember what we are the other 364 days of the year.

Mark Twain

Puzzle Pages

Easter Wordsearch

A	Y	O	E	C	S	R	S	R	E	W	O	L	F
K	N	T	N	C	E	T	A	L	O	C	O	H	C
E	E	R	G	C	H	T	E	N	S	U	E	R	T
G	B	N	Y	C	U	R	E	S	B	R	I	L	E
G	O	O	N	S	N	U	E	R	C	S	C	R	K
O	D	I	N	J	T	O	G	R	E	N	N	G	S
B	H	C	U	N	O	N	N	N	B	B	N	S	A
T	G	H	B	S	E	T	I	J	O	Y	G	M	B
C	B	R	A	Y	I	T	R	M	N	T	D	A	S
A	N	I	O	U	S	T	P	N	N	U	L	U	M
R	A	S	Y	L	M	T	S	S	N	C	N	N	D
R	T	T	R	E	D	B	R	A	Y	D	N	D	S
O	O	K	T	B	M	A	L	C	A	N	L	Y	U
T	E	A	S	T	E	R	Y	Y	S	D	B	S	S

JOY
SUNDAY
LAMB
SPRING
HUNT
CHOCOLATE
BUNNY
EGG
BASKET
EASTER
CHRIST
FLOWERS
CARROT
BONNET
RISEN
MAUNDY

Easter Egg Hunt

Alice, Bob, Cathy and Dan went on an Easter egg hunt. They found red, orange, yellow and green coloured eggs. Among the eggs they found, the number of red eggs were twice the number of green eggs. The yellow eggs were two more than the red eggs. The orange eggs were three more than the green eggs. Alice found as many eggs as Bob did. Cathy found three eggs more than Alice did. Dan found four eggs more than Bob did. Cathy, whose favourite colour is red gathered only red coloured eggs. None of the other kids gathered red coloured eggs.

Answer the following:

- 1) How many red eggs did they find?
- 2) How many orange eggs did they find?
- 3) How many yellow eggs did they find?
- 4) How many green eggs did they find?
- 5) How many eggs did Alice find?
- 6) How many eggs did Bob find?
- 7) How many eggs did Cathy find?
- 8) How many eggs did Dan find?



(Answers on p51)

On the facing page you will find an Easter colouring. If you would like to colour this in and deliver it to the editors at Bramley Cottage, Harvest Lane (letterbox on the fence) we will be creating a display of these pictures in the church for Easter Day. Please get all colourings to us by Thursday April 18th, and remember to include your name and (optional) age. Don't forget to pop into church from Easter Day onwards to admire them!



Coloured by:

A Mass Exodus from Bishopstone!

Early in March, on a Saturday morning, about 170 local people boarded 3 coaches by 9.00am in Salisbury – all arranged by Olive Moody (without an email in sight) – an amazing achievement! It isn't every day that one sees so many people up early, bright eyed and bushy tailed, ready for a day out. We were heading for the world-renowned opera house of Glyndebourne in West Sussex.

About 2 years ago Gus Christie, Executive Chairman of Glyndebourne, had commissioned an opera by Howard Moody (Olive's eldest son), as a result of seeing Howard's very moving opera, 'Push', first premiered in 2016. To have an opera commissioned by Glyndebourne is an exceptional honour and achievement, given its world-class status.

'Agreed' is the title of the new opera by Howard and it featured a cast of professional singers, a chorus drawn from the local community, Glyndebourne Youth Opera, the Orchestra of the Age of Enlightenment and Glyndebourne Youth Orchestra.

Glyndebourne is a beautiful place and for many in our group, who hadn't been to Glyndebourne before, it was not only an opportunity to see an exciting new opera, but it was also an opportunity to see the amazing gardens and setting for the summer festival too. Although the weather was cold, the lake, orchard and formal gardens were a delight, and very special to see without the usual crowds of picnickers!

The opera itself is remarkable. I found the whole performance totally engaging. Howard always pushes the boundaries, and many of his works have a strong moral and/or political undertone flowing through them. This opera is no exception. It's a story of murder, lost lands and love, with some hope in the mix. His music crosses boundaries too; Jazz, Baroque, African instruments, amateur and professional singers and children.

As Howard explains: 'The sound of the sea lies at the core of the music of Agreed. I became haunted by the idea of an ancient ancestral memory carried by song across the waters. A melody kept reappearing in my musical imagination that became the repeated voice of the piece, as played initially by Korimako on the flute made from the bone of the victim of terrorist attack.'

Incredibly, the opera is the result of not only Howard's creative energy but his clever daughter too; Anna Moody, now reading English at Trinity Cambridge, wrote the libretto.

Huge thanks must go to Olive who organised this wonderful day out which included organising for the restaurant to be opened especially for us, and a hot meal and a glass of wine after the long coach trip, beautifully served to us by an army of waitresses.

It was a very special Saturday for us all and humbling to recognise the very real talent that has been nurtured in our village - the Moody dynasty with Olive very firmly at its head.

Barbara Turvey



Sarah's Gardening Tips

Seasonal hints and tips to keep your garden looking its best

1. Sow broad beans every 2 weeks for cropping throughout the summer.
2. Globe artichokes are perennial plants and will crop for about 4 years.
3. Potatoes: Plant in drills and earth up around the stems to stop the tubers turning green.
4. Keep Peace Lillies in good health by growing in moist soil but out of direct sunlight.
5. Tropical plants are often killed by frost because unlike plants adapted to colder climes, they don't have expandable cells, so when the water in them freezes and expands they burst.
6. Feed lawns with a high nitrogen feed during the growing season.

*The greatest gift of the garden is the restoration
of the five senses.*

Hannah Rion



Question: Which commonly grown fruit has its seeds on the outside?

Answer on page 51.



Sarah's Garden Services: 07971709548, mygardenservices@outlook.com

Meet the Advertiser - Chalke Valley Dogs

A space for our regular advertisers to introduce themselves and tell us a little more about the services they offer.

Having grown up in a rural environment, my mother surrounded us with a variety of animals; horses, dogs, cats, rabbits, mainly unwanted or strays, I knew I always wanted to work with animals so I left school and qualified as a Veterinary Nurse and worked in a large animal vets until my parents emigrated to Cyprus. This led to a rather unplanned change in my working life, I moved to Winchester and got a temporary job with a small Ecological Consultancy, where I stayed for over 10 years and where I trained in Wildlife Surveying, CAD, GIS and Graphic Cartography. Here, is where I had my first introduction to the delightful dog that is a Miniature Schnauzer which was owned by my smitten boss.. and hence my journey into the world of dog grooming.

I got my own mini, who required grooming which I started to do myself, this led to friends and family asking me to groom their dogs. Now after over 10 years of owning and breeding mini schnauzers and having two children I decided to set up my own business.

I'm passionate about providing a calm and caring environment far and away from the larger scale parlours, allowing time for the dog and myself to get to know each other, focusing on the dogs comfort and well-being and ensuring stress is minimised. I work on a one-to-one basis with ethically produced non-animal tested products which are gentle on the dogs skin and coat. I am the proud owner of three dogs, Paddy the Labrador, and two crazy schnauzers (if you're a regular walker in the village you will know these two only too well, they are hard to ignore...) Molly and Mabel. If you would like to book your dog in, or just have an informal chat then please get in touch. I look forward to hearing from you. Annie x



STaB Selling Spot!

Having a spring clean? Clearing out your house, or shed, or garage?

Do you have anything that you would like to sell locally?

Why not advertise it in the STaB Selling Spot, and your advert will reach over 300 homes in the Parish!

FOR SALE

Either e.mail a short advert (including your name and phone number) to the editorial team on teamstab2019@gmail.com or drop a note with your advert on it into the letterbox on the fence of Bramley Cottage, Harvest Lane.

A donation of £1 per classified advert would be very welcome (in an envelope to Bramley Cottage, Harvest Lane please).

Advertising Rates

STaB - The Parish Magazine for the villages of Stratford Tony and Bishopstone

2019 Advertising rates – based on A5 page

STaB is delivered to around 300 houses in the parish, so your advert will reach many homes in the Chalke Valley. STaB is also published on the Bishopstone Village website: www.bishopstone-salisbury.co.uk

Price per year: 10 editions (Aug/Sept & Dec/Jan are joint editions)

Occasional adverts can be paid for at a pro-rata rate (1/10th of the annual rate per issue)

<p>Full page</p> <p>13x19cm</p> <p>£110 per annum</p>	<p>Half page</p> <p>13x9.5cm</p> <p>£60 per annum</p>	<p>Quarter page</p> <p>Portrait</p> <p>6.5x9.5cm</p> <p>£30 per annum</p>	<p>Quarter page</p> <p>Landscape 13x5cm</p> <p>£30 per annum</p>
---------------------------------------------------------------------	---------------------------------------------------------------------	-----------------------------------------------------------------------------------------	--------------------------------------------------------------------------------

How to place your ad in STaB

1. Make a .pdf, .jpeg, or Word file of your ad, making sure it is the correct dimensions for publication (see table of sizes and prices above) and that it will reproduce well in black and white.
2. E-mail the file to Rachael Dew (ads.stab@gmail.com), stating what size of ad you would like, and how long you would like it to run for.
3. The deadline for publication is 5pm on the 20th of each month. Please send ads as early as possible.
4. When you have placed your order, you will receive an invoice with details of payment by cheque or bank transfer. Please pay within 14 days. Donations always welcome.
5. The Editor reserves the right to edit all contributions.

Steak Night for Two Tuesday
 2 x 6oz Hampshire Rump Steaks & Two
 Glasses of 175ml Wine or Pint of Coke Zero,
 Diet Coke, Lemonade
 £25

Curry Night
 Friday Nights
 Two Homemade Curries served with Rice,
 Poppadom or Naan Bread
 £18

To book a table for either of these evenings
 phone us on 01722 780244

Last Thursday of Every Month QUIZ
 NIGHT
 Winning Team wins a Meal Voucher
 7.30pm start

The White Hart also caters for large parties
 & set menus can be provided for your
 convenience

Call us to reserve your table!!



Claudine's Fitness

FOR MEN AND WOMEN



Enjoy fitness routines designed specifically with you in mind in a fun, relaxed environment.

Claudine is a member of fitness professionals. As a certified instructor of pilates and HIIT, she teaches a variety of fitness classes for men and women of all ages and abilities.

Timetable

Monday	09:15	Fitness Pilates	Broadchalke Sports Hall
Monday	10:15	HIIT	Broadchalke Sports Hall
Monday	13:45	Pilates	Broadchalke Sports Hall
Monday	16:30	Pilates	Sixpenny Handley Village Hall
Monday	19:00	Better Backs	Bishopstone Village Hall
Tuesday	09:15	Pilates	Coombe Bissett Village Hall
Tuesday	14:00	Pilates	Radnor Hall
Tuesday	18:00	Fitness Pilates	Britford Memorial Hall
Tuesday	19:00	Pilates	Britford Memorial Hall
Wednesday	09:30	Better Backs	Bishopstone Village Hall
Wednesday	18:00	Pilates	Bishopstone Village Hall
Wednesday	19:00	HIIT	Bishopstone Village Hall
Wednesday	19:30	Pilates	Bishopstone Village Hall
Friday	09:15	Fitness Pilates	Broadchalke Sports Hall
Friday	11:00	Pilates	Bowerchalke Village Hall

Pilates – Improves balance, flexibility, core and back strength, and joint mobility.
Pilates for Better Backs (Better Backs) - Focuses on the back, hips and buttocks.
Fitness Pilates – Claudine's best of all disciplines, but not as intensive as HIIT.
High Intensity Interval Training (HIIT) – Getting you fitter faster without equipment.

Encouragement and achievement together

For more information call Claudine on 07788 587937

34

Visiting friends and family over Easter?

Why not take a lovely gift?
Chalke Valley Skincare
Paradise jams and chutneys
Mrs. Mack's salad dressing
Jenny Wren Confectionery
Joanna Kell framed prints
Books with a local theme



Spend just £20.00 (excluding Lottery, stamps, Post Office or tobacco)
for free local delivery within five miles of Coombe Bissett.

Our shop and Post Office are open:
Monday to Friday 7.00 am – 6.30 pm • Saturday 7.00 am – 1.00 pm • Sunday 8.00 am – 11.30 am
Closed Bank Holiday Mondays

01722 718852

Homington Road, Coombe Bissett SP5 4LR
shop@coombebissettstores.co.uk • www.coombebissettstores.co.uk
facebook.com/coombebissettstores



For all your pest issues, Local, fully insured, fully qualified BPCA Member
Wasps, Rats, Mice, Cluster fly, Clothes Moth, Fleas, Squirrels, Bed bugs
Call now- **07711 259749** Email- **info@wiltshirepestservices.co.uk**

evolve

TREE & GARDEN SERVICES

call Stuart Larter for a free quote

07563 645043

01747 871753



Tree Specialist,
Fully Qualified and Insured

www.evolveetree.co.uk

FISH & CHIP VAN

EVERY WEDNESDAY

COOMBE BISSETT STORES

5PM - 8PM

EVERY THURSDAY

CHALKE VALLEY SPORTS CENTRE

KNIGHTON RD, BROADCHALKE

4.30PM - 6PM

&

OUTSIDE 'DINTON PANTRY'

HINDON RD, DINTON

6.45PM - 8PM

OUR CURRENT MENU OFFERS CHIP SHOP CLASSICS INCLUDING SKINLESS BONELESS COD FILLET, SCAMPI, FISHCAKES, BATTERED SAUSAGES & BURGERS PLUS TRIMMINGS INCLUDING OUR OWN 'HOMEMADE' TARTARE SAUCE.

TELEPHONE ORDERS ACCEPTED DURING OPENING HOURS BY PHONING 07714438356

FOR MORE INFORMATION & FULL MENU PLEASE VISIT WWW.FRYINGTUCK.CO.UK

ANTIQUE RESTORATION



GEORGE JUDD

East Farm

Winterbourne Gunner

Salisbury SP4 6EE

01980 610576/611828

*Repair and restoration of antique furniture,
chair caning, porcelain repair, leather work,
gilding, upholstery*

E: georgejuddrestoration@hotmail.com



Picture Framing

We will frame: Photographs
Paintings, Prints, 3D objects e.g.
Sports Shirts, Memorabilia and
much more..

Call to visit our Coombe Bissett workshop:

01722 718695 or 07747 017221

Email: info@spireframing.co.uk

www.spireframing.co.uk

Be Inspired!

Pod & Pip

Workshop Open Thursdays and Fridays
10-4pm

Fresh Flowers, Plants, Cards, Candles & Gifts

Pre-ordered bouquets for local
delivery/collection

Flower Workshops, Wedding & Event Flowers

Ebble House, Stratford Tony

www.podandpip.co.uk

07766 775869

Kevin Knight Clock & Watch Repairs

Free estimates given

Over 30 years experience

Tel 01722 331969

Mob 07900 928451

Email:

kevindavidknight@gmail.com



Improves soil
structure

Suppresses weeds

The PH is neutral

Easy to handle

Encourages good root growth

Increases moisture retention

Excellent for top mulching



*This product has been tested over a period
of five years and has performed
to a high standard*

Delivered in sealed bags

CONTACT: JIM WEBB

THE HOLLOW • BARBERS LANE • HOMINGTON
SALISBURY • SP5 4NL

Tel: 01722 718611 • Mobile: 0781 841 8822

Ian Jones



BISHOPSTONE BASED

*For all your
general jobs
around the home
you have no time
for or can't do!*

FOR A FREE QUOTATION

CONTACT IAN:

t:01722 781169

e: i.l.j@btinternet.com

MADdy'S MENDiNG

*ALL ALTERATIONS AND MENDING, FROM
BUTTONS TO BLINDS, CURTAINS TO CUSHIONS*

No Job Too Small!!!

CALL MADdy ON: 01725 519504 OR,
0777 4207 423

FREE COLLECTION AND DELIVERY



LITTLE BANKSIDE

www.littlebankside.co.uk

Do you need extra space for visiting family & friends?
Self contained studio holiday let for 2 in Bishopstone.

Contact:
Hilary King
littlebankside@gmail.com
01722 780017



**General Carpentry & Joinery
General Building &
Maintenance**

**Tel/Fax: 01722 718855
Mobile 07710131473**

Email: ashfieldwoodworkers@hotmail.co.uk



Bespoke grooming within the heart of
the Chalke Valley
Annie on 07850 508680

SP Restoration

Antique Restorers

We offer our customers a specialist service in

Antique restoration, French polishing, Veneering, Complete table re-polishing, Wood turning and Desk leather inserts.

We have a fast chair repair service, we offer a collection and delivery service with free estimates. You're welcome to come visit us at our workshop:

Unit 1 St Martin's Workshops
Manor Farm
Fifield Bavant
Broadchalke, SP5 5HT
01722 780584



 **07340 501 297**

 **contact@cardinalcomputing.co.uk**

 **www.cardinalcomputing.co.uk**

FAST, FRIENDLY & RELIABLE

NO FIX / NO FEE

10+ YEARS EXPERIENCE

IN-HOME, PICK-UPS & RETURNS

**Technology problems
getting you down?**

We'll get you set up again

Desktop Screen, Virus Removal, Healthchecks,
System Installs, Hardware Issues, Network Set
Up, Computer & Printer Set Up, Data Back-Up,
Broken Laptop Screen, Virus Removal,
Operating System Installs, Hardware
Network Set Up, Tuition, Computer & Printer
Data Back-Up, Cloud Services, Broken Laptop
Screen Removal, Healthchecks, Operating System
Hardware Issues, Network Set Up, Tuition,

Sarah's Garden Services

Need help with your garden?



**Weeding, Planting, Mowing, Pond/Greenhouse Cleaning,
Holiday Watering etc**

No job too small!

07971 909 548

mygardenservices@outlook.com

Bishopstone based.

Wessex Contract Services

*Fencing, Landscaping,
Ground Care & Maintenance*

Lee Curtis

Tel: 01722780842

Mob: 07875018317

Email: lee@wessexcontractservices.co.uk



Robin Higdon

Your local garage

Car repair, maintenance and pre-MOT preparation for all makes of car.

The Unit, Croucheston Farm, Bishopstone.

Phone: 01722 780606

Jennie Gilbert - Pottery



I make Stoneware pots for the home. Perfect presents for you or your friends. You're very welcome to come and visit the workshop. I also run 2 day pottery courses, please call or email for details.

4 St. Martin's Workshops
Manor Farm
Fifield Bavant
Broad Chalke
Salisbury
SP5 5HT

01722 780402
www.jenniegilbert.com
jennie.gilbert@yahoo.co.uk



ARE YOU A DOG LOVER WHO MIGHT BE INTERESTED IN
BEING A DOG WALKER AND HOUSE MINDER ON AN
OCCASIONAL BASIS?

I HAVE TWO ENERGETIC DOGS AND LIVE IN BISHOPSTONE.
PLEASE CALL ME ON **07734 405039** IF YOU ARE INTERESTED.

THANK YOU.

April is a promise that May is bound to keep.

Hal Borland

GRAHAM DIMMER MOT CENTRE

MOT Tests on all types of vehicle up to 3,500kg
Servicing & General Repairs on all makes & models
Specialist vehicle diagnostics
Air Conditioning repairs & re-gassing
Electronic Wheel Alignment
Free Courtesy Car

01722 328344

Avon House, Newton Road, Churchfields Salisbury, Wilts SP2 7QA

Email: info@grahamdimmermot.co.uk

www.grahamdimmermot.co.uk

S. WALLWORTH ELECTRICAL SERVICES LTD

FULLY QUALIFIED ELECTRICIAN, EMERGENCY REPAIRS

INSTALLATIONS – RE-WIRES, ELECTRICAL REPAIRS & TESTING

EXTRA SOCKETS & LIGHTING, NIGHT STORAGE HEATING, ELECTRIC SHOWERS

DOMESTIC & COMMERCIAL



FREE QUOTATIONS.

SIMON WALLWORTH

31 DEAN LANE, SIXPENNY HANDLEY

SALISBURY, WILTSHIRE

SP5 5PA

TEL: 01725 552545 MOB: 07826 928759

S.WALLWORTH@HOTMAIL.CO.UK

METAL ARTWORK

BLACKSMITHS & GENERAL ENGINEERS

01722 781212

www.metal-artwork.co.uk



Registered Charity No: 1029398

A community run playschool nestled in the heart of the beautiful Chalke Valley next door to Broad Chalke primary school.

- Preparing pre-schoolers for their transition to school in a friendly and nurturing environment
- 20 months to reception age
- school term times
- weekly visits to school for PE & Library
- follow your child's progress in real time with the latest online learning journals
- pre-school preparation for all local schools

We are open Monday to Friday from 9am to 3pm and are currently accepting applications for 30 hours extended hours funded places.

Get in touch about a free taster session
t: 01722 781072

e: manager@chalkevalleyplayschool.co.uk

w: www.chalkevalleyplayschool.co.uk

facebook: @chalkevalleyplayschool

Chalke Valley Playschool, Newtown, Broad Chalke, Salisbury, SP5 5DS

Pregnant?

Looking for evidenced-based childbirth education?
Considering having an extra birth partner?

A doula can...

- Stay with you throughout labour and birth to help you achieve your specific choices
- Offer 1:1 breastfeeding and general feeding support
- Provide help at home for those first few days and weeks after birth

Doula Cally Edwards offers emotional and physical support to help you truly enjoy your pregnancy, birth and early days with your new baby



www.callyedwards.com



@doulacallyedwards

Come and join the fun at
Breastfeeding Support at this group
www.callyedwards.com

Bishopstone Playgroup

Term-time Fridays 9:30-11am, in
Bishopstone Village Hall
(just down the road from the
White Hart pub)

£2 for one child, £2.50 for 2+
Includes tea and coffee for adults
and snacks for all!

Find us on Facebook at 'Bishopstone Playgroup'

GRAY'S STONE CARVING STUDIO



BESPOKE MEMORIALS & INSCRIPTIONS

*We offer a personal, flexible and expert service
to create one-of-a-kind commissions which
celebrate and commemorate loved ones*

01722 341372 or 07766 464048
info@grays-stone-carving.co.uk

www.grays-stone-carving.co.uk

GRAYS STONE CARVING STUDIO

KNOWLE FARM BOWERCHALKE
SALISBURY SP5 5BP

MONDAY MORNING

Starting 5th March
7 weeks 9am to 12 noon

MONDAY EVENING

Starting 5th March
7 Weeks 6pm to 8.30pm

FRIDAY MORNING

Starting 2nd March
7 weeks 9am to 12 noon

WEEKEND

3rd 4th March
12th 13th May

For more information visit
www.grays-stone-carving.co.uk
or call 07766 464048

HIGHSPEC WINDOW CLEANING

Other Cleaning Services Include:

- Gutters
- Fascias
- Driveways
- Patios
- Conservatories
- Walls
- Greenhouses
- Cladding
- Solar Panels
- Paths

T: 01425 650894

M: 07554 092670

www.hs-cleaning.co.uk

Prince's Pet Care

Where pets are in Safe Paws



*Home from home dog boarding
and home visits for all pets*

*Reliable, established, local business
Fully licensed, Insured, Pet 1st Aid and Disclosure Checked*

www.princespetcare.co.uk
01722 718823

info@princespetcare.co.uk

Comfortable and cosy self-contained accommodation.

Little Bridge Studio

Bishopstone

Sleeps 3 plus cot.

Large open planned living space with wood burning stove.

Shower room and separate bathroom.

Contact: Alice Lyons - 01722 781137 or 07811455756

SAUL MITCHELL

TRADITIONAL PAINTER & DECORATOR

Tel: 01722 484094 or Mob: 07787 927455

saulmitchelldecorator.co.uk

smitchell852@btinternet.com

Matthew Veale

Mobile Hairdresser Available 6 days per week

Reliable friendly service London Toni & Guy trained

Please call 01722 336821 or 07788 686829

Charlotte Steel, VTCT, IHHT

Complementary Therapist

The Chapel, Bowerchalke, 01722 780107 mob: 07811 944328

Email: cjsteel92@gmail.com

Hot Stone Massage: Full body (90 mins) £60

Back, neck & shoulders (1hr) £47

Aromatherapy Massage: Full body (90 mins) £53

Back, neck & shoulders (1hr) £40

Reflexology: Initial consultation (1hr) £33

Further treatments (50 min) £30

Plus 30 minute face/head massage £47.50

Facial: Including, back, arm & head massage (75 mins) £57.50

For a further £14 massage appointments can be extended by 30 minutes to include extra work on problem areas or a relaxing head & face massage

Gift Vouchers Available

Home heating oil? You're in safe hands



We are Minster Fuels - suppliers of heating oil and fuel to homes,
farms and businesses for over 50 years.

Personal service and consistent value for money from a name
you can trust. That's what we've been delivering for over
half a century.

Wimborne 01202 897771

www.minsterfuels.co.uk



25 years of legal excellence

➔ Family ➔ Employment ➔ Litigation & Disputes
➔ Property ➔ Wills & Probate

Sampson Coward
SOLICITORS

St Mary's Chambers, 51 New Street, Salisbury, Wiltshire SP1 2PH
t: 01722 410664 e: mail@sampsoncoward.co.uk
www.sampsoncoward.co.uk



BASED IN FOVANT

01722 714308
07541 358570

- Local
- BPCA trained
- RSPH qualified
- Sensible pricing
- Fully insured
- Reliable
- Discreet
- Evening & weekends



www.greystonespestcontrol.com

michael@greystonespestcontrol.com

NEW Garage (Harnham) Ltd

01722 321 330

Salisbury Original Car Care Clinic
Vehicle wide diagnostics, whatever
the problem, we have the solution

- ◆ All Auto electrical work undertaken.
- ◆ Class 3, 4 & 7 MOTs with Class 1 and 2 available on request.
- ◆ Air conditioning services carried out.
- ◆ Lease work undertaken.

Under **NEW** Ownership, With **NEW** Focus,
NEW Drive, **NEW** Direction and **NEW** Skills.



www.newgarageharnhamltd.co.uk

RAC
Approved Garage

Letters to the Editor

Letters to STaB are very welcome, but the views expressed may not be those of the editorial team or the Parish Council.



It seems that even though the black bin is in place, people can't be bothered to use it. This is the second time I have put rubbish in it in a week (see attached photo - bin in Mill Lane).

Brenda Longhurst

A week or so ago just after the farmer had tidied up the hedges, the rubbish littering the hedgerows became more obvious so I decided to do something about it. Along Faulston Lane and Mill Lane alone I collected over 20 tins/bottles and endless sweet packets and empty cigarette packets. Since that first litter pick I have noticed the new bins in Mill Lane and would like to thank whoever placed them there.

Julia Wilson

And a letter from the editor...

As you can see from the above, the issue of littering in the village is one that concerns many of us who live here. Some of the rubbish around our roads and lanes is undoubtedly the result of the wind blowing it from bins, or bits falling out when the bins are emptied. Some of it of course has been dropped intentionally. But however it gets there, it's unsightly, potentially dangerous to children, pets and wildlife, and makes our village look uncared for.

I think we can all be part of the solution. If everyone in the village picked up a couple of pieces of rubbish every time they went for a walk, we could make a huge difference. Even if we did it once a week, or once a fortnight, it would help. If you have children, make it a fun focus for a walk - take tongs and a plastic bag and see how much litter you can find (my son used to love doing this, and I must get into the habit of doing it again). If you don't want to do it around the village, just take a look at the road that *you* live on. Could you take 30 seconds to pick up a stray piece of rubbish from the roadside and put it in your bin? It doesn't take a huge amount of effort, but it does all help.

Why not let us know how you get on? Thanks in advance for your efforts.

Kate Pendleton

April prepares her green traffic light and the world thinks Go.

Christopher Morley

Dear Editor

I was wondering how many older children and teens in the village need some after school / weekend plans. It strikes me more than I am aware of.

The reason for asking us that it's come to my attention that the Rec ground is almost always empty and yet I know I have two teens who would dearly love to have more equipment suitable for them in the Rec Ground or some youth activities either there or at the village hall. We currently love the basketball net and football goals which we use frequently and have made a big difference, but what equipment or youth activities would others like to see?

How and where do we get a grant for equipment or perhaps someone knows of a youth club needing an outside space to use or maybe there's an adult in the village would help referee a football match?

A Bishopstone Resident

The family of the late Kathleen Wareham would like to thank everyone for their cards and letters of sympathy and for those attending Mum's funeral.

£700 was raised through donations for Cancer Research UK, of which we are very proud.

Sally and family would like to thank all the people in the village who sent sympathetic wishes and flowers and who gave hugs at a time when much support was needed. The response to David's death was overwhelming.

We are fortunate to live in such a caring village.

God bless you all.



Did you find all the rabbits? The word they are spelling out is EASTER and they took the letters from the HARVEST LANE sign.

Answers to the Easter egg riddle:

1)10 2)8 3)12 4)5 5)7 6)7 7)10 8)11

Answer to the question in Sarah's Gardening Tips: Strawberry.

If there are any problems with the delivery of STaB please contact Sue Porter on 01722 780459.



Services in Chalke Valley Benefice – April 2019

BCP = Book of Common Prayer (Traditional Language), CW = Common Worship (Contemporary Language)



**Every Wednesday at 12.15pm, there is a short service of Holy Communion. In Lent, they will be at:
April – 3rd Homington, 10th Bowerchalke after which we return to our normal pattern**

7 April 5th Sunday of Lent	9.30am	Parish Communion (CW)	Britford	Catherine Blundell
	9.30am	Parish Communion (CW)	Broad Chalke	Jenny Taylor
	11.00am	Family Communion (CW)	Ebbsbourne Wake	Ann Philp
	11.00am	Mattins (BCP)	Berwick St John	Lay Led
	11.00am	Morning Service plus APCM	Bishopstone	Jenny Taylor
	11.00am	Family Communion (CW)	Coombe Bissett	Catherine Blundell
	11.00am	Family Service	Nunton	Adrian Taylor
	6.00pm	Evensong (BCP)	Homington	David Blundell
14 April PALM SUNDAY	8.00am	Holy Communion (BCP)	Broad Chalke	Catherine Blundell
	9.30am	Parish Communion (CW)	Bowerchalke	Catherine Blundell
	9.30am	Parish Communion (CW)	Odstock	Anna-Claar T-Rosingh
	10.30am	Ecumenical Service	Broad Chalke Chapel	Jackie Lowe/John Collins
	11.00am	Morning Service	Alvediston	Biddy Trahair
	11.00am	Choral Mattins (BCP)	Charlton All Saints	Michael Chandler
	11.00am	Family Communion (CW)	Coombe Bissett	Jenny Taylor
	3.00pm	Evensong (BCP)	Fifield Bavant	Biddy Trahair
	6.00pm	Evensong (BCP)	Berwick St John	Anna-Claar T-Rosingh
15, 16, 17 April	8.30pm	Compline	Coombe Bissett	
18 April MAUNDY THURSDAY	4.00pm	Short Communion(said) (CW)	Broad Chalke	Catherine Blundell
	6.30pm	Passover Supper	Radnor Hall	Anna-Claar T-Rosingh
	7.30pm	Commemoration of the Last Supper – Communion(sung) (CW)	Bishopstone	Jenny Taylor
19 April GOOD FRIDAY	11.00am	Passion Reading & Music	Alvediston	Lay Led
	12 noon	Devotional Service	Bowerchalke	Catherine Blundell
	1.00pm	Devotional Service	Broad Chalke	Jenny Taylor
	2.00pm	Devotional Service	Nunton	Anna-Claar T-Rosingh
21 April EASTER DAY	6.30am	Sunrise Communion	Lodge Farmhouse	Catherine Blundell
	8.00am	Holy Communion (BCP)	Homington	Anna-Claar T-Rosingh
	9.30am	Holy Communion (BCP)	Alvediston	Catherine Blundell
	9.30am	Family Communion (CW)	Broad Chalke	Anna-Claar T-Rosingh
	9.30am	Parish Communion (CW)	Bowerchalke	Kate R Smith / D Blundell
	9.30am	Parish Communion (CW)	Charlton All Saints	Anthony Hawley
	9.30am	Parish Communion (CW)	Bishopstone	Jenny Taylor
	10.30am	URC Holy Communion	Broad Chalke Chapel	Jackie Lowe
	11.00am	Parish Communion (CW)	Odstock	Anna-Claar T-Rosingh
	11.00am	Family Communion (CW)	Coombe Bissett	Jenny Taylor
	11.00am	Parish Communion (CW)	Berwick St John	Ann Philp
	11.00am	Parish Communion (CW)	Ebbsbourne Wake	Catherine Blundell
28 April 2nd Sunday of Easter	8.00am	Holy Communion (BCP)	Berwick St John	Kate Rosslyn Smith
	9.30am	Family Communion plus APCM	Broad Chalke	Catherine Blundell
	9.30am	Parish Communion (CW)	Charlton All Saints	Jenny Taylor
	11.00am	Family Service (CW)	Odstock	Adrian Taylor
	11.00am	Holy Communion (BCP)	Alvediston	Anna-Claar T-Rosingh
	11.00am	Choral Mattins (BCP)	Coombe Bissett	David Blundell
	11.00am	Parish Communion (CW)	Bishopstone	Ann Philp
	6.00pm	Evening Prayer (BCP)	Bowerchalke	Lay Led
5 May 3rd Sunday of Easter	9.30am	Parish Communion (CW)	Britford	Jenny Taylor
	9.30am	Parish Communion (CW)	Broad Chalke	Anna-Claar T-Rosingh
	11.00am	Family Communion (CW)	Ebbsbourne Wake	Anna-Claar T-Rosingh
	11.00am	Mattins (BCP)	Berwick St John	Lay Led
	11.00am	Morning Service	Bishopstone	Sally Leaver
	11.00am	Family Communion (CW)	Coombe Bissett	Ann Philp
	11.00am	Family Service	Nunton	Adrian Taylor
	6.00pm	Evensong (BCP)	Homington	Jenny Taylor

Ministry Team:

Team Rector ~ The Revd Catherine Blundell: 01722 780134

Team Vicars ~ The Revd Canon Jenny Taylor: 01722 503081, The Revd Dr Anna-Claar Thomasson-Rosingh: 01722 238267

Licensed Lay Minister ~ Mr David Blundell: 01722 780134 Team Administrator ~ Mrs Emily Broomhead: 07890 262376

URC Ministers ~ The Revds Ana & Tod Gobledale 01722 330980, The Revd Jackie Lowe: 01722 780008

Assisting Ministers: Canon Anthony Hawley: 01794 390607 Canon Ann Philp: 01722 555178, The Revd Kate Rosslyn Smith: 01722 780011