



Parish Magazine

December 2020-
January 2021



Bishopstone Church Crib Scene

Photo by Kate Pendleton

STaB is published by the Parochial Church Council and delivered free of charge to every home in Stratford Tony and Bishopstone. We hope you find it interesting and informative. **Donations towards publication costs are always welcome.**

Donations should be made payable to Bishopstone Parochial Church Council and sent to: The Treasurer, Bishopstone PCC, Ebble Cottage, Mill Lane, Bishopstone, SP5 4BG. Please state on a cover note that it is for STaB.

The views in this magazine are not necessarily those of the PCC.

Editor: Kate Pendlenton: 01722 780655

Editorial Team: Robert Pendlenton 780655; Cally Edwards: 01722 780079

Lizzie Williams: 01722 780905

Email: **teamstab2019@gmail.com**

Advertising

Sarah Brough: 07825 442110

E.mail: **ads.stab@gmail.com**

Any articles for inclusion are to be submitted by 5pm on the 20th of the month to appear in the next issue - *unless the magazine is already full.*

The editors reserve the right to edit all contributions.



The Editorial Team would like to extend their thanks to Rachael Dew for organising the advertising in this magazine over the past 2 years. Rachael is stepping down due to work commitments, but we are so grateful for the time she put into this job, so vital to the success of STaB. We are delighted to welcome Sarah Brough to the team to take on the advertising role.

St John the Baptist Church, Bishopstone.



Covid Restrictions Permitting, on Christmas Eve at 5pm

**we will be holding a Family Friendly service of
Communion around our Crib.**

We hope you will feel able to join us as we celebrate Christmas and join together in hope for our future.

A warm welcome to...

Please let us know if you know of anyone who moves into Bishopstone or Stratford Tony so that we can offer them a welcome in STaB.



Hello from the Revd Canon Jenny Taylor



As I write this Christmas is four weeks away and we are in a complete state of unknowing. Will families be able to come together? Will we be able to worship together in church? Will we be able to sing carols? We simply do not know although I am hopeful that Church services will restart in time to celebrate Christmas together. It will be different, it may well seem odd but the meaning, the reason and the underlying joy that Christmas brings cannot be submerged under the swamp of restrictions. The deep truth that God gave unconditional love to his world in that tiny baby is a truth that has traversed centuries and continents to reach us in this 21st century in these villages in Wiltshire.

It is unbearably sad that there are thousands who have died since last Christmas and our hearts go out to their families and their friends and our prayer must be for them all. Our prayer that something of the truth of Christmas will bring them comfort and hope, for as we read in the Gospel of John (3:16) *God so loved the world that he gave his only Son, so that everyone who believes in him may not perish but may have eternal life.*

The churches and congregations of Bishopstone and Stratford Tony wish all of you a blessed and peaceful Christmas that will bring hope to us all.

Chalke Valley Team Ministry - Parish of Bishopstone and Stratford Tony	
Team Rector:	The Revd Catherine Blundell 01722 780134
Team Vicar responsible for Bishopstone and Stratford Tony:	
	The Revd Canon Jenny Taylor 01722 503081
Church Wardens:	George Brutton 01722 718539 Sarah Seal 01722 780305
Lay Pastoral Assistants:	Sally Leaver 01722 780447 Sheila Nell 01722 781120
Team Administrator:	Emily Broomhead 07890 262376
	thechalkevalleychurches@gmail.com

Parish Council

A meeting of Bishopstone Parish Council took place on Thursday 12th November using Zoom Video Conferencing. Councillors Gibbon, Thorne, Barter, Brutton, Edwards and Tatner joined the meeting, as did Wiltshire Councillor Jose Green, Roger Stockton, Emergency Planning Officer, and two members of the public – Nick Legh and Harry Williams.

In the Public Forum section of the meeting Harry Williams asked the Parish Council to consider promoting a programme of tree planting in the parish. He said that there was much material available from the Woodland Trust on the benefits of increasing tree cover and on the species of trees that could be planted. It was pointed out that this would mainly be a matter of influencing landowners to undertake tree planting schemes. This matter would be brought forward for consideration at a future meeting.

Wiltshire Councillor Jose Green presented a report, which is included elsewhere in this edition of STaB.

The main agenda items discussed were:

Covid-19. The Chairman, Cllr John Gibbon, said that, despite optimistic claims about the availability of a vaccine, it is likely that restrictions on social and other activities will continue well into 2021. The work of the Emergency Planning Group in providing support for the community in Bishopstone had been widely recognised as exemplary and such support will continue to be required for some months yet. In order to better manage what could be a rapidly changing situation a more integrated approach was required to the consideration of when to restart activities in the village; to that end he had invited both the Parochial Church Council and the Village Hall Management Committee to nominate representatives to join the EPG.

Play Area. The Council considered options for additional equipment to be added to the Children's Play Area in the Recreation Field. This further investment would, in part, utilize funds that could only be used for that purpose. Consultations had been carried out with users of the Play Area and it was decided to install a Group Swing and a Clamber Stack. Priorities for maintenance of the existing facilities were also agreed.

Emergency Planning. Roger Stockton also referred to the situation on Covid 19, emphasizing that the Government guidelines were a minimum requirement and that account also needed to be taken of the large number of people in the village over the age of 60, or classified as clinically vulnerable or extremely vulnerable. This meant that whilst certain activities might be within the guidelines, it was not necessarily sensible for them to go ahead. On flooding he said that riparian owners needed to prepare now for the winter by clearing river channels, gullies and grips – see separate notice.

Finance. The Precept and Budget for 2021/22 were considered. Among the issues discussed was how best to use, for the benefit of the community, additional funding that had been received in the current year related to the Coronavirus pandemic. Part would be used in relation to the Children's Play Area (see above). For the rest it was concluded that the most equitable arrangement would be to reduce the level of the Precept (the amount of money the Parish Council receives as part of Council Tax) in 2021/22. That way every property in the village would receive some small financial benefit. It was agreed to set the Precept at half the level compared to this year, meaning that a Band D property will pay, as regards spending by Bishopstone Parish Council, about £17.00 next year compared with £34.00 in 2020/21.

The next meeting of the Parish Council is due to be held on **Thursday 14th January 2021 at 7.00pm**. Whether that meeting can take place in the normal way in the Village Hall or has to be held remotely by Zoom will be determined nearer to the time.

ROADWORKS ON PORTFIELD ROAD

Contractors for Wiltshire Council will be carrying out a carriageway repair works programme on Portfield Road, between the junction with the High Road, Bishopstone and Wilton, from **Wednesday 2nd December until Friday 4th December between 07.00 and 19.00**. Temporary road closures will be in place. The diversion route is via the Racecourse road.

BISHOPSTONE PRESCRIPTION COLLECTION ARRANGEMENTS OVER CHRISTMAS

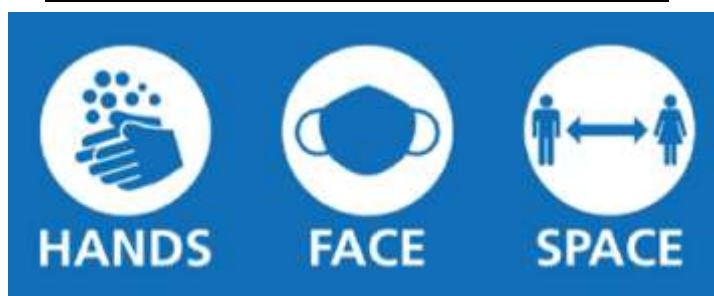
We have yet to be told which days the Sixpenny Handley Surgery/Dispensary will be open over the Christmas period. However, it is likely that the last day for the collection of prescriptions by our drivers will be Wednesday 23rd December, with collections resuming on Wednesday 30th December. There is also unlikely to be a collection on Friday 1st January.

If you have repeat prescriptions due at these times please make sure that you contact your Area Co-ordinator to arrange collection in advance (or afterwards if you have sufficient supplies).

WE NEED SOME ADDITIONAL DRIVERS TO COLLECT PRESCRIPTIONS – IF YOU THINK YOU CAN HELP PLEASE CONTACT CAROLINE ASH ON 01722 781044 TO DISCUSS.



Coronavirus Update



On 31st October the Government announced a second “lockdown” to tackle the Coronavirus pandemic. This is due to expire on 2nd December. During that time everyone is required to stay at home, except for specific purposes, and avoid meeting people you do not live with. It is not known what restrictions will be put in place after 2nd December. The alert level remains **HIGH** because the number of confirmed Covid 19 cases in Wiltshire is still increasing.

Whilst important steps forward have been achieved in creating a vaccine, it is not yet known how effective it will be, or precisely when it will become available for people living in Bishopstone. What is clear is that pending mass immunization, and possibly for some time after that, **it will remain important to continue observing the Government’s guidance and to maintain safe practices – such as washing hands, covering faces and keeping a sensible distance from others.**

Comprehensive guidance continues to be available on the Government’s website <https://www.gov.uk/coronavirus> and via the village website.

If and when restrictions ease, it will also be important to learn the lessons from the last lockdown during the Summer. Then there was a natural inclination to re-start social and other activities. This led to the second wave of Covid 19. **WE THEREFORE NEED TO TAKE GREATER CARE AS RESTRICTIONS ARE EASED THIS TIME.**

To that end representatives of the Parochial Church Council and the Village Hall Management Committee have joined the EPG. This will help ensure that a more integrated approach is taken to dealing with the emergency in the village.

The EPG has sought, from the beginning, to emphasise that the guidelines set out by the Government are the minimum requirement and that these need to be applied sensibly reflecting local circumstances. It remains the case that people over 60 years of age, or those who are clinically vulnerable, are at higher risk of severe illness from coronavirus. Bishopstone has a population of around 620 residents, with over 40% aged over 60 years of age and with a large number classified as clinically or extremely vulnerable. **THIS PUTS A PARTICULAR RESPONSIBILITY ON US ALL TO PROTECT OURSELVES AND TO PROTECT OTHERS.**

IT WILL ALSO BE OF VITAL IMPORTANCE THAT EVERYONE TAKES THE OPPORTUNITY TO HAVE A VACCINATION WHEN IT IS OFFERED. Until then, and beyond, the Parish Council and the EPG will work to support the community in Bishopstone until the pandemic is over.

Emergency Planning Group

Report from Councillor Jose Green

Needless to say Covid 19 has had a huge impact on how Wiltshire Council is operating at present. Many are home working but committees are still working well through Microsoft Teams and Zoom. Planning decisions are made with the public able to contribute to the decision process as usual. Full Council also works well with the voting protocol being very efficient. Last week a live stream was online for anyone wanting to hear the latest on the pandemic in Wiltshire.

The mobile library service has ceased whilst we are in this second lockdown but the Household Recycling Centres are open, hopefully the bin collections will be reliably emptied but if staff need to self isolate alternative staff need to step in at the last minute so there could be delays. 8,000 Wiltshire businesses have been supported by discretionary grants and recently the Government sent a further £600k to help provide long-term accommodation for rough sleepers.

There are currently 12,500 people across Wiltshire on unemployment payment with 2,400 under 24 years old, we must do our utmost to reduce this number and we must all be aware of the mental health of all ages as these unprecedented weeks continue. Free school lunches are still available for children. £168k came down from Government to support those in self-isolation. The most recent figures on this is that there have been 180 applications but only 40 were eligible.

Wiltshire Council is encouraging parents with a child of 2 years on or before 31st December 2020 to apply for 15 hours of free childcare for 38 weeks of the year. Childcare, known as Better2gether Funding for parents on income support, ie. for parents on Universal Credit or a child who has an education, health and care plan.

Wiltshire Council has responded to the Government's white paper on 'Planning for the Future', it was debated fully; like many others there are concerns about maintaining democracy when planning applications are submitted. It is also proposed to increase the housing numbers from 42 thousand to 56 thousand in Wiltshire, although there are some 1 million houses across the UK that have permission but remain unbuilt, there should be some tougher pressure placed on those developers to commence building sooner rather than 'land banking' as some are inclined to do.

The SWW Area Board met on the 11th November where some priorities were beginning to be identified for Councillors to address over the next 3-5 years. These priorities very much influence what projects are supported by grant applications. I hope as many people as possible will respond to the emails that will be circulated to all PC's, businesses and organisations asking for their opinions.

Finally, there are 24 Support Groups in our Area and our sincere thanks go out to those volunteers who have given of their time during this exceptional situation. As it still continues please contact me if you need any further information for help.

We are all in this together!

Keep safe.

Best wishes, José.

Village Hall



December 2020 -
January 2021

NOTE: All arrangements are provisional and are dependent on future Government guidance and local circumstances.

Please check with the organisers of the group or event before setting out.

OPEN FOR ADVANCE BOOKINGS

Both halls are available for hire for permitted activities, subject to the acceptance of the “Special Conditions of Hire during Covid-19” which are available from the bookings secretary (Margaret Barter 01722 780471) and the village website. These include the wearing of masks, hand sanitising and maintaining social distancing.

BISHOPSTONE COMMUNITY CAFE

Regrettably the Café will remain closed for the time being. It will re-open as soon as government guidelines allow and when it is safe to do so. Dates will be announced on the village noticeboards and web site.

BISHOPSTONE COMMUNITY LUNCHESES

Unfortunately because of the continuing need for social distancing and risks associated with a large gathering, we are unable to hold the Christmas lunch this year.

We hope to resume lunches as soon as we can next year.

MOVIOLA at Bishopstone

Friday 29th January 2021.

We hope to have a Moviola evening on Jan 29th, film to be confirmed. The decision about whether to go ahead with the showing will be dependent on current government advice at that time.

Pre-booking will be essential and we would like payment in advance to avoid queueing at the door. Please phone Caroline Ash on 01722 781044 to book and for details of how to pay. (Online payment is preferred but cheques are acceptable and we will have a card payment device at the door. No loose cash please.)

Only the main feature will be shown and the evenings will take place under the current government “safe practice” guidelines. This means you will need to wear a face-covering (though this may be removed once seated whilst eating or drinking).

There will be no bar or snack sales but guests are welcome to bring their own refreshments.

Tickets for all Moviola films cost £6. Doors open at 7.15pm for a 7.30pm showing.

BABY AND TODDLER PLAYGROUP

For general information about the Baby and Toddler Group find their Facebook page Bishopstone Playgroup, or contact Kate Pendleton on 01722 780655 or email : kmpendleton@hotmail.com . Sadly the group cannot meet at present.

“EXTEND” EXERCISE CLASSES

For information about these exercise classes contact Jenny on 01722 780863, email: jennyberwynjones@yahoo.co.uk

PILATES AT BISHOPSTONE

Contact Claudine on 07788 587937

YOGA WITH HANNAH

Classes have resumed and run every Thursday 6:15-7:15pm and 7:30-8:30pm
For more details and to confirm a place contact Hannah Stocker on 0773 856 1888 or by email: yoga_with_hannah@outlook.com.

SARUM SPINNERS AND WEAVERS

Because of the recent lockdown, we are unable to hold our monthly meeting on 1st December but instead, it is hoped to resume on Tuesday 8th December subject to regulations. 7.00pm - 9.00pm.

Any spinners or weavers in the area are very welcome to join us. We would also like to welcome any ladies from Needles and Pins as we understand that you no longer have your regular meetings.

Please check arrangements with Les Smith on 01722 780761.



The census is taking place in March 2021.

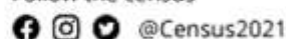
It's a survey that happens every 10 years and gives us a picture of all the people and households in England and Wales. It helps plan and fund public services, like transport, education and healthcare.



By taking part and encouraging others to do the same, you'll help make sure you and your community get the services you need. Nearer the time, you'll receive more information. There'll be plenty of help to take part for people who need it.

Find out more at www.census.gov.uk

Follow the census



The Famous Village Christmas Card!

For several years the village hall trustees have organised a 'Village Christmas Card'.

Rather than send individual cards to friends in the village, some people opted to sign one large card during the Christmas Fayre at the hall and donated to a local charity when doing so.

Sadly none of the usual Christmas events will be happening this year but we are very aware that charities are suffering at the moment.

Although there will be no Christmas Fayre, we are going to arrange a **Virtual Christmas Card** to raise funds for the Stars Appeal. We are extremely fortunate to have such an excellent local hospital with friendly hardworking staff worthy of our support.

If you would like to make a donation via the **Virtual Christmas Card**, please send your details and any donations, small or large, to Francis Taylor, email frstaylor1@btinternet.com or phone 780316 for village hall BACS details.

Alternatively drop a cheque or cash into 14 The Croft, Bishopstone.



All proceeds will go directly to the **Salisbury District Hospital Stars Appeal**.

We will publish details of the amount we raised in the February edition of STaB.

Thank you and Happy Christmas to everyone from the Bishopstone Village Hall Trustees.

WHY NOT JOIN US ON THE BISHOPSTONE NETWORK?



Earlier this year the Bishopstone Emergency Committee established a WhatsApp group as a means of sharing information in our community. *This is not simply for times of crisis*, but provides a useful communication network for day to day questions and queries.

You will need to download the WhatsApp to your phone and then contact Piers Edwards (piersgedwards@gmail.com or 07920 475009), Michelle Tatner (mtatner@hotmail.co.uk or 07968 842525) or Kate Pendleton (kmpendleton@hotmail.com or 07769202200) and ask to be added to the group.

Bishopstone Village Hall rates for private hire

Bishopstone Village Hall has 2 rooms that are available for hire for a wide range of functions. The larger room is ideal for children's parties with lots of space for running around. It can also accommodate wedding receptions, charity functions and large family celebrations.

The smaller room (The Memorial Room) is a good size for meetings and smaller gatherings.

The modern kitchen is spacious and fully equipped with an electric catering range, a professional 4 minute dishwasher, water boiler, hot cupboard, microwave oven, 2 fridges and a freezer, all suitable for professional caterers. There is also glassware, crockery and cutlery for over 80 people.

The hire charges include use of heating and electricity.

The rates are currently:

	Villagers	Non Villagers
Hire of both rooms (With full use of the kitchen)	£15 per hour	£20 per hour
Hire of both rooms (With tea making facilities but no other electrical kitchen equipment)	£10 per hour	£15 per hour
Full use of the kitchen <u>only</u>	£10 per hour	£15 per hour
Weddings – per event/day	£150	£250
Parties – per event/day	£100	£150

Broadband

An additional charge is made for use of the broadband connection of £6 per hour with a maximum of £25 per day.

Large projection screen

Use of this professional quality screen is charged at an additional £10 per event.

The hire period must include time to set up and clear away after the event.

For further information and bookings contact: Margaret Barter 01722 780471

Chalke Valley Community Support

POLICE

Call 999 in an emergency: an emergency is when someone is being threatened or at risk of getting injured, or a crime is in progress.

Call 101 for non-emergencies: such as reporting a crime that has already taken place, non-urgent incident, contacting local officers etc

You can also contact local Police as follows:

PCSO Matthew SMITH – matthew.smith@wiltshire.pnn.police.uk

PCSO Simon WARD - simon.ward@wiltshire.pnn.police.uk

PC James BARRETT - james.barrett@wiltshire.pnn.police.uk

PC Matt HOLLAND – Community Policing Co-Ordinator

CPTSouthWiltshire@wiltshire.pnn.police.uk (*e.mail address for general enquiries*)

Community Messaging – for emailed crime reports and local policing updates, sign up at www.wiltsmessaging.co.uk

Social media – for local policing updates follow us on Facebook

@salisburypolice and Twitter **@SouthWiltsCPT**



Sixpenny Handley and Chalke Valley Practice

Doves Meadow Surgery, Broad Chalke: 01722 780282

BROAD CHALKE SURGERY CURRENTLY CLOSED

Despite requests for this information we have no news as to when it will reopen.

Sixpenny Handley Surgery: 01725 552500

www.sixpennydocs.co.uk



STaB draws attention to the support being provided in the village by the Parish Council and the Emergency Planning Committee. But help is also available from Wiltshire Council.

If you are self-isolating due to coronavirus (COVID-19) and you need help you can call the helpline on: 0300 003 4576



STAY HOME STAY SAFE

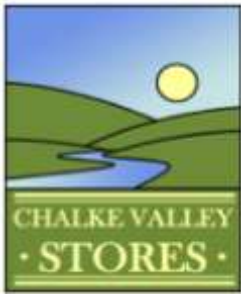
**For vulnerable people
in need of support call**

0300 003 4576

#WiltshireTogether



Wiltshire Council



Shop: Open weekdays 9am - 4pm (9am-2pm on Saturdays)

Coffee Shop: Currently closed.

Post Office: Open Mon, Tues & Thurs 9.30am –1.30pm:

w: www.chalkevalleystores.co.uk

e: info@chalkevalleystores.co.uk

Tel: 01722-780998

SHOP LOCAL:

As we approach this busy time of year with every one thinking about Christmas, please continue to shop locally and support both the shop and the café. We need your support to continue to serve the community.

CHRISTMAS AT THE SHOP:

Order your show stopping Christmas centre piece from Manor Farm Meats through the shop. Whole or Crowns of barn or free-range Turkeys, Geese and Duck are all available. Check the prices and place your order in the shop.

A range of Luxury foods and wines will be available and small hampers can be purchased for you to create the Christmas Gift for the "person who has everything". Cheese Hampers can also be made up to order.

COFFEE SHOP:

The Coffee Shop was reopened successfully in late October. Sadly in light of the latest lockdown it has been forced to close again. However, a takeaway service of drinks and snacks continues to be available through the shop.

After 2 December, if regulations permit, our intention is to reopen the Coffee shop, with all the social distancing measures we have already put in place.

AWNING:

An awning has now been erected outside the shop to protect customers from the elements while queuing. Thank you to Nigel for helping us with this.

VOLUNTEERS:

Our thanks go to all the volunteers who give their time to ensure the Shop and Coffee shop are manned with such enthusiasm and cheerfulness. We are so pleased to see so many volunteers have returned since the summer.

Our thanks also go to Tony and the permanent staff for maintaining such a high level of service to us all in these difficult times.

WILTSHIRE LIFE:

The visit to the village by the Lord Lieutenant and the High Sheriff (our own Ashley Truluck) is well recorded in the latest edition of Wiltshire Life. Copies are available in the shop.

The Trussell Trust

Donations received over the last month - 8.4 Kgs

At the present time they are still asking in particular for:-

Long Life Fruit Juice

Tinned Fruit

Instant Mashed Potato

Tinned Rice

Sponge Pudding

Shower Gel

Tinned Meat

Dried Milk

Shampoo

Deodorant



If you can provide any of these, particularly Long Life Fruit Juice, they will be very grateful, but really anything you feel you can offer will be so useful at this time.

As usual, if you wish to donate money (cash or cheque) instead of food you can as normal leave it with me to take for you or you can go online and donate directly to the Salisbury Trussell Trust, either a one off or a regular payment which can also be Gift Aided if you are able.

When you are reading this report Christmas will be getting very close indeed. Please if you can, try to think of things to bring a bit of joy to those receiving and help to make Christmas a better time for those who have so little. If a person cannot afford to buy essentials then they really cannot buy the little treats that we all look forward to. Please help with whatever you can.

Suggestions for Christmas:- Colouring book, colouring pencils and felt tip pens, Tinned Ham, Christmas pudding, chocolates, tinned custard, special biscuits, chocolate selection box, crackers etc.

Christmas donations have to be with the Trussell Trust by **Dec 10th**, so please, if you can, let me have them by the **9th** so that I can then get them to the depot. Other items will be gratefully accepted up to the **18th** December, then they will be **closed over Christmas and New Year.**

Please continue to leave your donations at The Old Post Office, The Cross, either ring the doorbell or leave them on the step. If you cannot get them to me then please phone me and I will arrange for someone to collect at your convenience.

Thank you again for everything that you have done over the years and hopefully will continue to do for this very worth while cause.

Keep safe and healthy everyone and I wish you all a very merry Christmas and hopefully a new year that turns out to be better than 2020

Blessings,

Judy Barrett (01722 780306)

The Friends of Bishopstone Church

If you would like to help the Friends of Bishopstone Church with their work of preserving the fabric of this beautiful building, please contact the Treasurer Norman Barter (01722 780471).

Remembrance in 2020

On a foggy but dry morning, about thirty-four of us gathered in the churchyard on Sunday 8th November to remember the fallen from our villages. This year, after much consideration, the service was held in the churchyard, in accordance with the guidelines. Canon Jenny led our short service, Mike Bundy recited the Roll of Honour, and Alan Stutchbury gave the reading from the 15th chapter of St John's gospel.



After the short service, it was felt that it had been more poignant standing somewhat apart from each other in the open air. There was time to reflect and to think. Afterwards, about £150 was generously given for the RBL Poppy Appeal. The village also gave £414 from collections in the village hall, the Croft and Croucheston. This is much less than last year and entirely due to our not being



allowed to make door-to-door collections. However, whatever we collect and send to the RBL will be most warmly welcomed for the benefit of servicemen and women in their hardship. Many thanks to the collectors for their enthusiasm and help. Without this we would hardly manage anything for the Poppy Appeal.

I would like to thank all those who helped to make the service and the collection possible this year, who decorated the church, despite all the problems and difficulties put in our way by Covid19.

We remembered with pride and honour our fallen villagers.

***AT THE GOING DOWN OF THE SUN
AND IN THE MORNING,
WE WILL REMEMBER THEM***

Major James Thompson MBE (Nov 2020)



Further Notes on Whitlock Rise

Mr Fred Whitlock (1863-1932)

He was born in Pitton and married Ann Maria Eales (1862-1937) at United Methodist Free Church, Milford Street, Salisbury in 1887. They had 10 children, 5 boys and 5 girls.

Fred was a Prudential Assurance Agent and his eldest son, William Frederick was sub post-master and shop keeper in Bishopstone by 1915. In the 1891 census the family were living as tenants at Vella House, by 1901 they had moved to Croucheston, and the last record in 1911 shows they lived at 'Pitts'. During Fred's time in Bishopstone, he was involved in many voluntary roles. From his funeral announcement in the Salisbury Journal dated Friday 13 May 1932 it reports that Fred was:

'Clerk to the Parish Council from 1896 to the time of his death, collector of taxes from 1912, secretary of the Wilts Agricultural Workers' Union, chairman of the local branch of the National Executive of the Union, secretary of the Chalke Valley branch of the Wilts Ratepayers' Association, Hon. Secretary of the Bishopstone Reading Room, and other village organisations, member and clerk of the Parochial Church Council, and for over 20 years a member of the church choir. This was a man who made friends wherever he went.'

He certainly kept busy with all his voluntary roles. There is no report of why the dairy between Whitlock Rise and Meadow View was called Whitlock Dairy, nor why the estate was so named.

Meanwhile, more about 20th century Whitlock Rise.

The estate was built by Holdaways of Westbury who built quite a few council houses. They were heated by a Rayburn in the kitchen and an open fire. The bungalows just had open fires. The gardens were separated with posts and wire as a boundary which did little to deter children from wandering from one garden to the next.

Some of the houses were initially offered to people from outside the village, so Mike Bundy wrote to the local MP Michael Hamilton, outlining the need to house villagers. He was successful in getting a house in 1965.

The estate was a great place for children to play safely. Cars weren't allowed to park on the road so the car park was in use for residents. One day Mike Bundy was unloading a sack of potatoes and parked on the road in front of his house. Before too long the local policeman came to the door to get Mike to move his car, 'otherwise I shall have to book you for it!' Once a house was purchased the owner wasn't allowed to use the car park, and was expected to use the driveway of the house.

In the 1980s the men of Whitlock Rise had to dig the road out when the snow had drifted to a great height, and no one could get out. The main road through the village was single lane only with huge snowdrifts making it very difficult to pass.

1977 The Queen's Silver Jubilee

The procession started at Crouchston and travelled through the village. The Bishopstone Young Wives Group had made a float on Les Rogers' lorry, and Mike Bundy, dressed as a Teddy Boy, drove it as part of the procession.



Does anyone recognise any of the ladies on board the float?

Sheila Bundy is far right in the mini skirt!

Anne Stutchbury

YOU cannot prosper by discouraging thrift

YOU cannot strengthen the weak by weakening the strong

YOU cannot help the poor by destroying the rich.

YOU cannot establish sound security on borrowed money

YOU cannot keep out of trouble by spending more than you earn.

YOU cannot build character and courage by taking away man's initiative and independence

YOU cannot help men permanently by doing more for them than they can do for themselves.

From Abraham Lincoln's Fiscal Policy, 1865

Thanks to Shirley Cooke for submitting this.

GP Surgeries Support for Unpaid Carers

GP practices in Wiltshire that are providing the best support to unpaid carers have been recognised in the Wiltshire Investors in Carers GP Accreditation Scheme.

The awards recognise and celebrate those Wiltshire GP practices who have met a number of requirements, including maintaining an up-to-date carer register, having a carers' lead and providing clear information and flexible appointments for carers.

Among the surgeries receiving awards were:

Avon Valley Practice – Platinum

Barcroft Medical Centre – Platinum

Downton Surgery – Silver

Harcourt Medical Centre – Silver

Hindon Surgery – Platinum

Millstream Medical Centre – Silver

Salisbury Medical Practice – Platinum

Sixpenny Handley & Broadchalke – Platinum

The Orchard Partnership – Gold Plus

This is the eighth year that Carer Support Wiltshire has coordinated the awards, which were set up to ensure more consistency in the support carers receive within GP practices. The awards are funded by Wiltshire Council and the NHS Wiltshire Clinical Commissioning Group.

Tracey Cox, Chief Executive, Bath and North East Somerset, Swindon and Wiltshire Clinical Commissioning Group, said:

“A lot is often said about the immense value of carers and, while it’s impossible to quantify just how important they are, we know that carers nationwide are able to save the country’s economy more than £130 billion each year showing their immeasurable worth.

“It is so important to identify carers in our community and to provide them with the right support and help that they need. I am pleased that so many more GP practices across Wiltshire are providing this support and being recognised for their efforts through this great Accreditation Scheme.”

Christmas Tree Collections

Love having a real tree at Christmas but hate the New Year clean up? Salisbury Hospice Charity have the answer. Following the huge success of last year's initiative during which approximately 1000 trees were collected and recycled, raising almost £13,000 of vital funds for the hospice, together with £1067 for local charity Love for Louis, we are once again running the scheme in conjunction with the charity Just Helping. This year we are hoping the initiative will again be well supported, as so many of our key events have been cancelled due to Covid-19 restrictions. We will also make a donation of 10% (after costs) to the local charity Charlie's Star which provides breaks in Cornwall for bereaved parents of children under 19. The collection also helps the environment as all of the trees are chipped and recycled as animal bedding, or composted.

A promotional poster for the Charity Christmas Tree Collection. The top section features a photograph of a person in a red jacket and black pants cutting a large pile of green Christmas trees in a snowy field. Text on the poster includes: 'Charity Christmas Tree Collection' in white on a black background; 'in aid of' in white; the Salisbury Hospice Charity logo (a blue and white oval with a tree icon and the text 'Salisbury Hospice Charity Celebrating 40 years of care'); the 'JUST HELPING' logo in green and white; '8th - 10th Jan 2021' in large red font; 'LEAVE THE EFFORT OF GETTING RID OF YOUR TREE TO US!' in bold black font; 'We would welcome a donation for the collection of your Christmas Tree' in black; 'Our volunteers are collecting trees from postcodes SP1, SP2, SP3, SP4, SP5, SP6 and SP9' in black with red postcodes; 'Register your tree at www.charityxmastreecollection.com' in black; 'register by midnight on 4th Jan 2021' in black; and a red banner at the bottom with white text: 'After costs, 90% of the monies raised will go to the hospice and the remaining 10% to local charity Charlie's Star'.

Charity Christmas Tree Collection

in aid of

Salisbury Hospice Charity
Celebrating 40 years of care

JUST HELPING

8th - 10th Jan 2021

LEAVE THE EFFORT OF GETTING RID OF
YOUR TREE TO US!

We would welcome a donation for the collection of your Christmas Tree

Our volunteers are collecting trees from postcodes
SP1, SP2, SP3, SP4, SP5, SP6 and SP9

Register your tree at
www.charityxmastreecollection.com
register by midnight on 4th Jan 2021

After costs, 90% of the monies raised will go to the hospice and the remaining 10% to local charity Charlie's Star

All that we ask is for a donation in return for the collection and recycling of your tree by our wonderful volunteers between 8th and 10th January 2021. 2021 will be our 40th year of providing palliative care in Salisbury and the surrounding areas; we have many events planned to celebrate this throughout 2021, so look out for these.

To have your tree collected and recycled after the festive season, register it at www.charityxmastreecollection.com or call 01722 416353, by 4th January 2021.

Puzzles and Activities

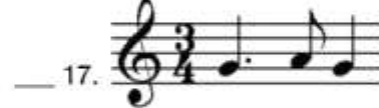
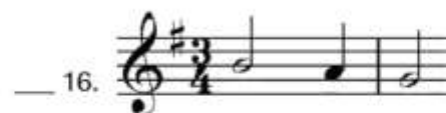
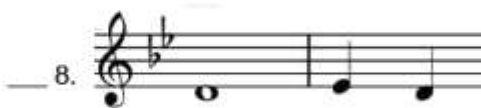
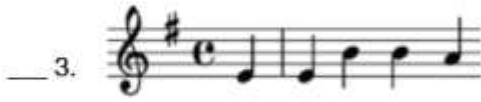
By Cally Edwards and Kate Pendleton

CHRISTMAS MUSIC Name that Song

Can you identify these familiar Christmas tunes by no more than their first few notes?



- | | | |
|---------------------------------|--------------------------------------|--------------------------------|
| a. God Rest Ye, Merry Gentlemen | g. Angels We Have Heard on High | m. The First Noel |
| b. Handel's Hallelujah Chorus | h. O Holy Night | n. The Holly and The Ivy |
| c. Silent Night | i. We Three Kings | o. As with Gladness Men of Old |
| d. O Little Town of Bethlehem | j. It Came Upon a Midnight Clear | p. O Come, O Come Emanuel |
| e. Jingle Bells | k. Away in the Manger | q. White Christmas |
| f. Hark! The Herald Angels Sing | l. I Saw Three Ships Come Sailing In | r. Good King Wenceslas |





How many words can you make from the letters in

FATHER CHRISTMAS

Two columns of horizontal lines for writing answers.

What do you call a snowman in the summer?

A puddle!



What do elves learn in school?

The elf-abet.



Rambling Again

Another month has passed, and we have remembered our Fallen with honour and great support this year. The new lockdown from early November meant a quick change to our service, which Rev Jenny covered with her usual aplomb and humour! Our gathering in the churchyard was terrific and means a lot to the Fallen. More on that in a separate piece.



The weather has become more wintery, not surprisingly, and so less rambling, but we still meet many dogs passing the house, and manage a chat with them .. and with their walkers. As the leaves fall and are blown into other gardens, we receive those from our neighbours. The splendid bin service has been working almost overtime to gather all our fortnightly offerings.

Which cottage in Bishopstone?

I continue to paint and to sketch to keep busy, and help daughter Jo with her Advent calendars. She constructs them in wood with 25 spaces for the days of Advent and colours them silver or gold. She also makes lovely little gnomes from clay in all sorts of colours!

The efficient drive-through flu inoculation centre which our GP practice set up in Broad Chalke school, must be an example for everyone. It was so simple and easy to follow, we were through and out in no time, and hardly noticed the jab! Well done to them for this splendid piece of planning and execution. I hope that they follow the same system when the anti-Covid 19 jab comes available. Many thanks to them for keeping going through all the trials of lockdown.

It really is time to hunker down at home now and try to plan for Christmas as best we can, with all the necessary restrictions on movement and meetings. It is amusing to see on my last two trips into town, that all the benches in the Cathedral Close are occupied by people meeting with a thermos of coffee for a social chat! Maybe we should do more of that on our village benches?



Marlborough College Chapel

A very happy Christmas to all readers of STAB, especially if you have got this far!! And our heartfelt thanks to the STAB Editorial team for all their hard work this year.

James Thompson

Recipe of the Month - Vanillekipferl

(vanilla and almond crescent biscuits)

This is a typical German Christmas bake and is great for children to have a go. They're ridiculously more-ish and make a lovely gift if they last that long. Makes about 50!

Ingredients

Dough

175g softened butter

75g caster sugar

2 vanilla pods, scraped for seeds / 2 teaspoons of vanilla bean paste

2 medium egg yolks

150g ground almonds

250g plain flour

Vanilla Sugar and Icing Sugar to cover

100g caster sugar

1 vanilla pod, scraped for seeds

Icing sugar to sprinkle over once cooled

Recipe

For the vanilla sugar

Mix 100g caster sugar and the seeds from 1 vanilla pod in a food processor until fine, to make sure the vanilla is evenly distributed. Put to one side until the end.

For the dough

In a food processor, combine the caster sugar and vanilla pods or paste to form a stiff paste. Separate the egg and pulse in the egg yolks, (saving the whites for another recipe) followed by the ground almonds and plain flour. Once all mixed, tip out into a bowl and squeeze together to make a dough. Once you've pulled it together in 1 lump, wrap it up in clingfilm and put in the fridge for 1 hour.

Preheat the oven to 180 degrees C (160 degrees fan). Line 3 baking sheets with baking paper. Break off a walnut sized piece of dough and squeeze into a slightly tapered sausage shape, bending into a crescent moon shape and keeping fairly flat - you can press down with your finger tips to help flatten. Repeat this with all the dough, laying out each crescent shape onto the prepared baking sheets, 2 cm apart.

Bake for 12-15 minutes. The biscuits should be lightly golden, pale and firm rather than browned. Whilst the biscuits are still warm, toss them in the vanilla sugar. Once cooled, gently shake the icing sugar through a sieve on top of the biscuits to give them a good snow-covered dusting.



Cally Edwards

Sarah's Festive Gardening Tips

1. Cheer up your garden entrance with some outdoor lights around a bush
2. Decorate your front door with a wreath or some holly.
3. Start pruning fruit trees and roses.
4. Leave faded hydrangea heads on until spring to protect the new buds from frost.
5. Check climbers are securely attached to their supports with ties.
6. Take hardwood cuttings from suitable trees and shrubs.
7. Dig a trench for next year's beans, fill it with compostable kitchen waste and re-cover with soil. It will rot down and improve the next harvest.
8. Wash and disinfect bird feeders and clean out the bird bath

*It is like the seed put in the soil-the more one sows, the greater the harvest.
Orison Swett Marden*



Question: What are the 3 main types of real Christmas Tree? (Answer on p51)

Sarah's Garden Services: 07971 909 548

Email: mygardenservices@outlook.com

Follow us on Facebook and Instagram @sarahsgardenservices

Bishopstone Emergency Planning Update

Last year I published a picture of the sign on the Flood Cottages in Shrewton to act as a timely reminder. You may remember that the cottages were built from money raised by public collections in the year after the Great Flood.

This year I go back a little further and quote from *The Age of Chivalry, The Story of England* by Arthur Bryant to bring things in line with our current pandemic, though our situation is much improved on 1348.

“Despite every precaution by the port authorities the plague crossed the Channel. Some time in August 1348 it broke out in the little Dorset town of Melcombe Regis, now Weymouth, “depriving it almost of inhabitants.”

During that autumn the plague struck down southern shire after shire, Poole was so depopulated that it did not recover for more than a century.

In some villages like Bishopstone, near Salisbury in Wiltshire, scarcely a soul survived, and when life was renewed after the plague the site was left deserted.”

BISHOPSTONE’S EMERGENCY PLAN FOR FLOODING 2020

This is a reminder to all property owners deemed at risk to ensure they are adequately prepared for the coming winter.

First and foremost all details are contained in Bishopstone’s Community Emergency Plan. A copy of this is available on the village website. Just click on Emergency Planning on the side bar and download the pdf copy of the document. Anyone considering themselves at risk who is unable to obtain a version of the plan this way should contact me by phone and I will give you a copy.

The plan contains procedures for a full range of potential emergencies including those arising from Flooding, Snow and Ice and Power Failures. In addition there are details of:

The way the plan operates

Resources and Emergency Equipment available in the village

What to do

Who your local area representative is

Contact Details

Useful Websites

In this month’s copy of STaB is included a page of Local Numbers for Contact during an Emergency

COMMONSENSE ACTIONS

If you consider yourself at risk from flooding:

Do you know who your Flood Warden is and his contact details?

Do you know who your area representative is and his/her contact details?

Do you have a Personal Flood Plan?

Do you have your own personal emergency equipment? We recommend torches and batteries, waterproof clothing, blankets, camping stove for hot drinks, battery-powered radio. Those at greatest risk should have pumping equipment and gel bags.

The Emergency Planning Group comprising Flood Wardens, members of the Parish Council and Area Representatives will help but their priority is to the older or vulnerable members of our community. Please remember it is a property owner's responsibility to prepare and protect their own property - it is not the role of the Emergency Planning Group. In a nutshell - if you consider yourself at risk... then prepare!

OTHER ACTIONS

The normal request at this time of year is to landowners and riparian owners:

Riparian owners are requested to ensure that river flow is not impeded by debris.

Landowners should ensure ditches are cleared of mud and weeds.

Landowners should ensure grips are cleared to allow excess water flow from roads into ditches.

In many cases the simple act of kicking some debris out of the way is often sufficient to unblock a grip or drain so please be watchful if you are out for a walk. More serious problems should be reported via the My Wilts App.

DEFIBRILLATOR

The village does have a defibrillator that is located on the Western (Butt Lane) side of the Village Hall. Full instructions for its use are with the equipment.

BE AWARE AND BE PREPARED - IT MAKES SENSE!

The following pages are a useful summary of important numbers, which you may wish to pull out and keep somewhere easily accessible.

ROGER STOCKTON
EMERGENCY PLANNING COORDINATOR
780346

Bishopstone Community Emergency Plan

USEFUL NUMBERS TO PULL OUT AND KEEP

The Bishopstone Community Emergency Plan is on the village website. It contains suggested actions in the event of emergency events within the village.

We publish the details below for you to keep as a useful link to services that you may require in an emergency.

LOCAL NUMBERS FOR CONTACT DURING AN EMERGENCY SITUATION (FLOODING)

FLOODLINE **0345 988 1188** when prompted dial 1.

Environment Agency (Local Office) 01258 483326
Blandford (This is the Incident Control Room for Bishopstone)

Environment Agency (Emergency) 0800 807060

Wiltshire Council 01225 713000 (May need to request the Incident Control Room)

Wiltshire Council, Salisbury 01722 336272 (working hours)
01722 411676 (out of hours)

EMERGENCY NUMBERS

Police/Fire/Ambulance 999 if danger to life

OTHER USEFUL NUMBERS

Local Police – non emergency 101

Bishopstone Village Hall 780907

Emergency Services

Fire Service 01380 723601

Police 01380 722341

Ambulance 01249 443939

Chalke Valley Surgery

Broad Chalke 01722 780282 (Currently closed)

Sixpenny Handley 01725 522500 (In an emergency ring this number)

Utility Emergencies

Wessex Water 0345 600 4600 (Emergencies and operational problems) and 0345 600 3600 (For vulnerable people who have joined Customer Care Plus)

Sewage Floodline 0345 8505959 (24 hours)

Customer Services 0345 6004600

Electrical –

Scottish and Southern 08000 727282

Highways – Wiltshire Council 0800 232323

Clarence 01225 777234 and/or clarence@wiltshire.gov.uk

BT 0800 800150

Other Agencies offering assistance

Samaritans 0345 7909090

Salvation Army 01489 566800

St John's Ambulance 01305 751169

National Flood Forum 01299 403055

The Citizen's Advice Bureau 01264 365534

Road problems 0800 232323

RADIO/TV

Local Radio

SPIRE FM 102 FM

Wessex FM 96.0 and 97.2FM

BBC Wiltshire 103.5, 103.6, 104.3 and 104.9 FM

Local TV

BBC South TV

Meridian TV

Useful email addresses

Wessex Water customer.services@wessexwater.co.uk

Wiltshire Council Contacts

Jonathon Seed Flood Group Salisbury, Wiltshire Council

Danny Everett Drains, Wiltshire Council

Renate Moulton Projects Officer, Wiltshire Council

Equipment Hire

See local directories.



Take Away Menu

Available Tuesday – Saturday 6pm -9pm

Pub Classics

White Hart Southern Fried Chicken Strips,
Fries & Coleslaw £8.95

Beer Battered Cod & Chips £8.95

Chicken Tikka Curry or Root Vegetable & Lentil
Curry with Rice, Poppadom or Naan £8.95

Steak & Guinness Pie, Chips, Peas & Gravy
£9.95

Burgers

6oz Beef Burger - £8.50

7oz Chicken Burger - £8.75

Thai Vegan Burger - £8.50

Foot Long Pig N Blanket topped with Sauté
Onion & Curry Sauce £9.50

(Additional Toppings 50p – Bacon, BBQ Sauce,
Cheddar, Stilton, Brie, Jalapeno & Scorchers
Cheese)

Winter Warmers

Slow Roasted Lamb Shank in a Mint Gravy,
Crushed Potatoes & Braised Red Cabbage
£12.75

Poached Salmon in a White Wine, Cream &
Tarragon Sauce, New Potatoes & Tender Stem
Broccoli £12.50

Coq au Vin (Chicken Casserole in Red Wine,
Onion, Garlic, Mushroom & Pancetta Sauce)
served with Mash Potato & Carrots £11.95

Red Thai Beef Stir fry & Egg Noodles £10.50

Fisherman's Pie (Cod, Salmon, Smoked
Haddock, King Prawns & Mussels) topped with
Parmesan Mash served with Carrots &
Broccoli £12.50

12" Thin Crust Pizza

Margarita
(Tomato Base, Mozzarella, Beef
Tomato & Oregano) £9.95

Seafood
(Pesto Base, Mozzarella,
Prawns, Mussels, Squid,
Anchovies & Black Olives)
£13.95

Italian Meat Feast
Smoked Tomato Base,
Mozzarella, Parma Ham,
Salami, Chorizo & Spicy Beef)
£13.95

Indian
(Spicy Tomato Naan Base,
Mozzarella, Chicken Tikka,
Onion Bhaji, Mango, Peppers &
Coriander) £13.95

Vegetarian
(Pesto Base, Mozzarella,
Caramelised Red Onion, Goats
Cheese & Basil) £11.95

Indian Vegan
(Tomato Naan Base, Vegan
Cheese, Pepper Dew Peppers,
Red Onion, Tofu, Mango &
Coriander) £11.95

Sunday Roast

Beef £12.25, Lamb £12.95, Chicken £11.95,
Pork £11.95

All served with Seasonal Vegetables, Roast
Potatoes, Yorkshire Pudding & Gravy
Sunday Only 12pm – 2.30pm

The White Hart, Bishopstone

01722 780244



**DORSET & WILTS
STORAGE**

SELF STORAGE FACILITY

Safe, secure & convenient

Self-storage units for domestic or business use

****SPECIAL DEAL : 50% off for your first 8 weeks ****

All sizes available

On the A354 near Sixpenny Handley

Enquiries to David 07971 869372 or Steph 07748 925810

01725 552557

Or email: info@dorsetandwiltsstorage.co.uk

www.dorsetandwiltsstorage.co.uk

Returning online shopping?

Simply bring your item to Coombe Bissett Stores and Post Office and we will do the rest. Do you have a code to scan? We do that too! We accept any size or shape of parcel (the largest so far was a bicycle) and we open every day except Sundays.



Please note that only Post Office / Royal Mail codes can be processed here, not MyHermes or Collect+ .

Coombe Bissett Stores • Homington Road • Coombe Bissett • SP5 4LR • 01722 718852



Shop and Post Office hours
Monday to Friday 7.00 am – 6.00 pm
Saturday 7.00 am – 1.00 pm
Closed Bank Holiday Mondays



For all your pest issues, Local, fully insured, fully qualified BPCA Member
Wasps, Rats, Mice, Cluster fly, Clothes Moth, Fleas, Squirrels, Bed bugs
Call now- **07711 259749** Email- **info@wiltshirepestservices.co.uk**

Robert Huxley



Experienced stockman. All aspects of agricultural work considered (livestock/tractor work, grass management, fencing etc)

Email: rhuxley1972@gmail.com Tel: 07493 721317



SAUL MITCHELL INTERIOR DESIGN

Tel:01747820682

Mob: 07787927455

www.saulmitchell.co.uk

admin@saulmitchell.co.uk



07340 501 297



contact@cardinalcomputing.co.uk



www.cardinalcomputing.co.uk

FAST, FRIENDLY & RELIABLE

NO FIX / NO FEE

10+ YEARS EXPERIENCE

IN-HOME, PICK-UPS & RETURNS

Technology problems getting you down?

We'll get you set up again

evolve

TREE SERVICES

call Stuart Larter for a free quote

07563 645043
01747 871753



Tree Specialist,
Fully Qualified and Insured

www.evolveetree.co.uk

FISH & CHIP VAN

EVERY THURSDAY

BROADCHALKE

CHALKE VALLEY SPORTS CENTRE
KNIGHTON RD FROM 4.30PM - 6PM

&

DINTON

ON THE CORNER OF HINDON RD
& SNOW HILL FROM 6.45PM - 8PM

FOOD ORDERS CAN BE PLACED

- ★ **PHONE/TEXT ON 07714438356**
- ★ **ONLINE VIA OUR WEBSITE OR FACEBOOK**
- ★ **IN PERSON AT THE VAN**

FOR MORE INFORMATION & FULL MENU PLEASE
VISIT WWW.FRYINGTUCK.CO.UK

PA CARE DIRECTORY

CARE AND HOME HELP

The PA care directory have spaces for new clients a free to use service matching a carer to your needs.

CALL US TODAY ON 07557417563 FOR YOUR OWN PERSONALISED TAILORED HELP IN YOUR OWN HOME.

EMAIL HSPRAGG83@YAHOO.COM
OR CALL FOR HELP.



Picture Framing

We will frame: Photographs
Paintings, Prints, 3D objects e.g.
Sports Shirts, Memorabilia and
much more..

Call to visit our Coombe Bissett workshop:

01722 718695 or 07747 017221

Email: info@spireframing.co.uk
www.spireframing.co.uk

Be Inspired!



EBBLESIDE BUILDING LTD

Extensions – Property restoration – Groundworks
Bricklaying – Carpentry – Roofing – Plastering – Tiling
Traditional lime works – listed building works – Kitchens –
Bathrooms

All aspects of building work carried out

Tel: Russell **07463780938**, Campbell **07976438752**

Email: campbell.mcculloch@tiscali.co.uk, russfoss19@aol.com,

Registered in England & Wales No: 11291245

Vat reg no 308159701

Registered office: Ebbleside, Stratford Tony, Salisbury, Wilts, SP5 4AT

BREAD
FLOWERS
AT HOME

FRESHLY COOKED TAKEAWAY DISHES

DESIGNED TO BE A WEEKEND TREAT

Bread & Flowers brings you delicious flavours to relish & inspire.
Dishes are cooked & prepared to order by our team at our HQ,
ready to be collected by you and reheated at home.

OUR FRIDAY MENU FEATURES:

- mezze / starters
- main courses
- side dishes
- puddings
- food for entertaining

enquiries@breadandflowers.co.uk

01722 326581

Bread and Flowers

Longford Farmhouse

Bodenham, Salisbury, SP5 4EL

Order online for collection
on Fridays 2pm-6pm

breadandflowersathome.co.uk

METAL ARTWORK

BLACKSMITHS & GENERAL ENGINEERS

01722 781212

www.metal-artwork.co.uk



Pregnant?

Looking for evidenced-based childbirth education?
Considering having an extra birth partner?

A doula can...

- Stay with you throughout labour and birth to help you achieve your specific choices
- Offer 1:1 breastfeeding and general feeding support
- Provide help at home for those first few days and weeks after birth

Doula Cally Edwards offers emotional and physical support to help you truly enjoy your pregnancy, birth and early days with your new baby



www.callyedwards.com

   @doulacally



THATCHING BY BRAD YOUNG

WWW.MASTER-THATCHER.COM

CRAFTSMAN IN WHEAT STRAW & WATER REED

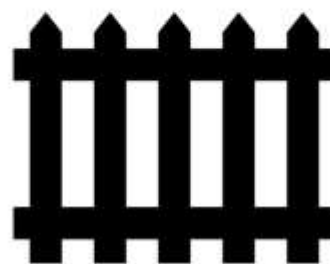
MERRILEAS, NORTH ST
BROADCHALKE, SP5 5EN

07717887743

BRAD@MASTER-THATCHER.COM



Ebble Fencing



- Bespoke Fences and Gates
- Professional Service
- 20+ Years Experience
- Fully Insured
- Free Quotations

07789 707959

www.ebblefencing.com



TATNER and CO

TRADITIONAL AND MODERN UPHOLSTERY

Our bespoke upholstery services include:

Dining Room Chairs	Roman Blinds	Campervan seating and Rock and Roll beds
Arm Chairs (including Parker Knoll)	Curtains	Classic car seating
Outdoor/garden seating cushions	Scatter cushions	Caravan and motorhome seating
Bench seating (kitchen, bar and restaurant)	Box Cushions	Ottomans and storage boxes
Footstools (including made to measure stools)	Headboards	

Contact Michelle Tatner on :

MOBILE : 07968 842525

Facebook : Tatner and Co

EMAIL: tatnerandco@gmail.com



Instagram: tatner_and_co

Jennie Gilbert - Pottery



I make Stoneware pots for the home. Perfect presents for you or your friends. You're very welcome to come and visit the workshop. I also run 2 day pottery courses, please call or email for details.

4 St. Martin's Workshops
Manor Farm
Fifield Bavant
Broad Chalke
Salisbury
SP5 5HT

01722 780402
www.jenniegilbert.com
jennie.gilbert@yahoo.co.uk

Robin Higdon

Your local garage

Car repair, maintenance and pre-MOT preparation for all makes of car.

The Unit, Croucheston Farm, Bishopstone.
Phone: 01722 780606

Pod & Pip

Workshop Open

Thursdays and Fridays 10-4pm

Saturday 930-1230

Fresh Flowers, Plants, Cards, Candles & Gifts

Pre-ordered bouquets for local
delivery/collection

Flower Workshops, Wedding & Event Flowers

Ebble House, Stratford Tony

Kevin Knight Clock & Watch Repairs

Free estimates given

Over 30 years experience

Tel 01722 331969

Mob 07900 928451

Email:

kevindavidknight@gmail.com

HIGHSPEC WINDOW CLEANING

Other Cleaning Services Include:

- Gutters
- Fascias
- Driveways
- Patios
- Conservatories
- Walls
- Greenhouses
- Cladding
- Solar Panels
- Paths

T: 01425 650894

M: 07554 092670

www.hs-cleaning.co.uk

Tim Saunders Plumbing & Tiling Services

Complete Kitchens, Bathrooms & Wet rooms
Tanks, Cylinders, Pumps, Valves & Radiators
Taps, Basins, & Toilets

Unvented hot water system installation, repair
& servicing (G3 certificated)

Stuart Turner approved installer

Disabled/assisted living zero vat
installations/conversions

Wall & floor tiling

Free advice and estimates

Emergency repairs. No call out fees

Fully insured

07772 610190

Email: timsaundersps@gmail.com

GRAY'S BESPOKE
STONE MEMORIALS
CARVING &
STUDIO INSCRIPTIONS

Creating memorials of
celebration and commemoration

for more information visit:
www.grays-stone-carving.co.uk

or call tel: 07766464048

Unit 2 Knowle Farm, Bowerchalke, SP5 5BP

Prince's Pet Care

Where pets are in Safe Paws



Home from home dog boarding
and home visits for all pets

Reliable, established, local business
Fully licensed, Insured, Pet 1st Aid and Disclosure Checked

www.princespetcare.co.uk
01722 718823

info@princespetcare.co.uk



Improves soil
structure
Suppresses weeds
The PH is neutral
Easy to handle
Encourages good root growth
Increases moisture retention
Excellent for top mulching



*This product has been tested over a period
of five years and has performed
to a high standard*

Delivered in sealed bags

CONTACT: JIM WEBB

THE HOLLOW • BARBERS LANE • HOMINGTON
SALISBURY • SP5 4NL

Tel: 01722 718611 • Mobile: 0781 841 8822



GRAY'S STONE
STONE CARVING
CARVING COURSES
STUDIO & TUITION

Learn to carve in a supportive
and encouraging environment.

for more information visit:
www.grays-stone-carving.co.uk
or call tel: 07766464048

Unit 2 Knowle Farm, Bowerchalke, SP5 5BP



- ➔ Family
- ➔ Employment
- ➔ Property
- ➔ Litigation & Disputes
- ➔ Commercial
- ➔ Wills & Probate

St Mary's Chambers, 51 New Street, Salisbury, Wiltshire SP1 2PH

t: 01722 410664 e: mail@sampsoncoward.co.uk

www.sampsoncoward.co.uk

LITTLE BANKSIDE

www.littlebankside.co.uk

Do you need extra space for visiting family & friends?
Self contained studio holiday let for 2 in Bishopstone.

Contact:
Hilary King
littlebankside@gmail.com
01722 780017

MADDY'S MENDING

ALL ALTERATIONS AND MENDING, FROM
BUTTONS TO BLINDS, CURTAINS TO CUSHIONS

No JOB Too Small!!!

CALL MADDY ON: 01725 519504 OR
0777 4207 423

FREE COLLECTION AND DELIVERY



S P Restoration

Antique Restorers

We offer our customers a specialist service in

Antique restoration, French polishing, Veneering, Complete table re-polishing, Wood turning and Desk leather inserts.

We have a fast chair repair service, we offer a collection and delivery service with free estimates. You're welcome to come visit us at our workshop:

Unit 1 St Martin's Workshops
Manor Farm
Fifield Bavant
Broadchalke, SP5 5HT

01722 780584



NEW Garage (Harnham) Ltd

01722 321 330

Salisbury Original Car Care Clinic
Vehicle wide diagnostics, whatever
the problem, we have the solution

- ◆ All Auto electrical work undertaken.
- ◆ Class 3, 4 & 7 MOTs with Class 1 and 2 available on request.
- ◆ Air conditioning services carried out.
- ◆ Lease work undertaken.



NOW OFFERING PAYMENT ASSIST

Pay just 25% of your bill today
Spread the remaining cost over the next 3 months
NO FEE NO INTEREST NO CATCH



www.newgarageharnhamltd.co.uk

RAC
Approved Garage

ONEHUNDREDWORKS

one hundred works of art for sale

one hundred works of art for sale

WWW.ONEHUNDREDWORKS.COM

Claudine's Fitness FOR MEN AND WOMEN



Enjoy fitness routines designed specifically with you in mind in a fun, relaxed environment.

Claudine is a member of fitness professionals. As a certified instructor of pilates and HIIT, she teaches a variety of fitness classes for men and women of all ages and abilities.

Timetable

Monday	09:15	Fitness Pilates	Broadchalke Sports Hall
Monday	10:15	HIIT	Broadchalke Sports Hall
Monday	13:45	Pilates	Broadchalke Sports Hall
Monday	16:30	Pilates	Sixpenny Handley Village Hall
Monday	19:00	Better Backs	Bishopstone Village Hall
Tuesday	09:15	Pilates	Coombe Bissett Village Hall
Tuesday	14:00	Pilates	Radnor Hall
Tuesday	18:00	Fitness Pilates	Britford Memorial Hall
Tuesday	19:00	Pilates	Britford Memorial Hall
Wednesday	09:30	Better Backs	Bishopstone Village Hall
Wednesday	18:00	Pilates	Bishopstone Village Hall
Wednesday	19:00	HIIT	Bishopstone Village Hall
Wednesday	19:30	Pilates	Bishopstone Village Hall
Friday	09:15	Fitness Pilates	Broadchalke Sports Hall
Friday	11:00	Pilates	Bowerchalke Village Hall

Pilates - Improves balance, flexibility, core and back strength, and joint mobility.

Pilates for Better Backs (Better Backs) - Focuses on the back, hips and buttocks.

Fitness Pilates - Claudine's best of all disciplines, but not as intensive as HIIT.

High Intensity Interval Training (HIIT) - Getting you fitter faster without equipment.

Encouragement and achievement together

For more information call Claudine on 07788 587937

PARKER BULLEN

SOLICITORS

Private Client

Helping you plan for your family's future,

including:-

- **Preparation of Wills**
- **Administration of Estates**
- **Lasting Powers of Attorney and General Powers of Attorney**
- **Setting up and Administration of Trusts**
- **Income Tax Advice and Returns**
- **Capital Gains and Inheritance Tax Planning**

We are currently offering a **10% discount** on our standard fees for Wills to all those who quote "**STaB Parish Magazine**" when booking an appointment with our Private Client team.

Home visits in the local area available on request.

Salisbury Office

www.parkerbullen.com

Andover Office

Tel: 01722 412 000

Twitter: @ParkerBullen

Tel: 01264 400 500

Comfortable and cosy self-contained accommodation.

Little Bridge Studio

Bishopstone

Sleeps 3 plus cot.

Large open planned living space with wood burning stove.

Shower room and separate bathroom.

Contact: Alice Lyons - 01722 781137 or 07811455756

Matthew Veale

Mobile Hairdresser Available 6 days per week

Reliable friendly service London Toni & Guy trained

Please call 01722 336821 or 07788 686829



Bespoke grooming within the heart of
the Chalke Valley
Annie on 07850 508680

Charlotte Steel, VTCT, IHHT Complementary Therapist

The Chapel, Bowerchalke, 01722 780107 mob: 07811 944328

Email: cjsteel92@gmail.com

Hot Stone Massage: Full body (90 mins) £60

Back, neck & shoulders (1hr) £47

Aromatherapy Massage: Full body (90 mins) £53

Back, neck & shoulders (1hr) £40

Reflexology: Initial consultation (1hr) £33

Further treatments (50 min) £30

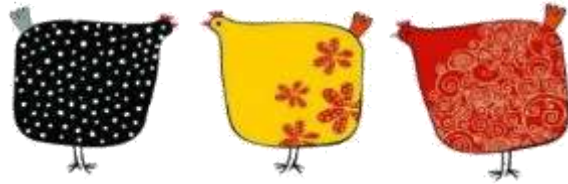
Plus 30 minute face/head massage £47.50

Facial: Including, back, arm & head massage (75 mins) £57.50

For a further £14 massage appointments can be extended by 30 minutes to include extra work on problem areas or a relaxing head & face massage

Gift Vouchers Available

NEWBOURNE FARM



COMPOSTING

A local, family run business based in Rockbourne since 1995, offering green waste disposal and the sale of top quality accredited topsoil and compost.

On site processing of materials produces excellent screened 10mm top soil, landscaping compost for domestic and commercial use and agricultural spec compost.

Local delivery available for bulk bags or loose loads.

For more information about our products please contact

Rod 01725 518673 / 07896 544197 or

Andy 07766 163203

www.newbournecompost.co.uk





The White Horse

at Quidhampton



The White Horse at Quidhampton offers excellent food, friendly service, delicious wines and top-quality ales in a traditional village pub environment, where we believe in old-style pub values.

- 3 CASK ALES, WITH TWO EVER CHANGING GUESTS
- LOCALLY SOURCED INGREDIENTS FROM LOCAL SUPPLIERS
- HOME COOKED MENU OF TRADITIONAL PUB FAVOURITES
- DELICIOUS SUNDAY ROASTS SERVED EVERY WEEK
- MONTHLY CHARITY QUIZ NIGHT (1ST THURSDAY)
- LOG BURNER, BEER GARDEN AND CAR PARK
- FUNCTION ROOM & SKITTLE ALLEY FOR HIRE
- PARTIES, GATHERINGS & FUNCTIONS CATERED FOR



FOR RESERVATIONS OR MORE INFORMATION CALL 01722 744448
OR VISIT OUR WEBSITE

WWW.QUIDHAMPTONWHITEHORSE.CO.UK



Sarah's Garden Services

Need help with your garden?



**Weeding, Planting, Mowing, Pond/Greenhouse Cleaning,
Holiday Watering etc**

No job too small!

07971 909 548

mygardenservices@outlook.com

Bishopstone based.

Wessex Contract Services

*Fencing, Landscaping,
Ground Care & Maintenance*

Lee Curtis

Tel: 01722780842

Mob: 07875018317

Email: lee@wessexcontractservices.co.uk





BASED IN FOVANT

01722 714308
07541 358570

- Local
- BPCA trained
- RSPH qualified
- Sensible pricing
- Fully insured
- Reliable
- Discreet
- Evening & weekends



www.greystonespestcontrol.com

michael@greystonespestcontrol.com

GRAHAM DIMMER MOT CENTRE

MOT Tests on all types of vehicle up to 3,500kg

Servicing & General Repairs on all makes & models

Specialist vehicle diagnostics

Air Conditioning Repairs & Re-gassing

Electronic Wheel Alignment

Free Courtesy Car

01722 328344

Avon House, Newton Road, Churchfields, Salisbury, Wilts SP2 7QA

Email: info@grahamdimmermot.co.uk

www.grahamdimmermot.co.uk

S. WALLWORTH ELECTRICAL SERVICES LTD

FULLY QUALIFIED ELECTRICIAN, EMERGENCY REPAIRS

INSTALLATIONS – RE-WIRES, ELECTRICAL REPAIRS & TESTING

EXTRA SOCKETS & LIGHTING, NIGHT STORAGE HEATING, ELECTRIC SHOWERS

DOMESTIC & COMMERCIAL



FREE QUOTATIONS.

SIMON WALLWORTH

31 DEAN LANE, SIXPENNY HANDLEY

SALISBURY, WILTSHIRE

SP5 5PA

TEL: 01725 552545 MOB: 07826 928759

S.WALLWORTH@HOTMAIL.CO.UK

Advertising Rates

STaB - The Parish Magazine for the villages of Stratford Tony and Bishopstone

2020 Advertising rates – based on A5 page

STaB is delivered to around 300 houses in the parish, so your advert will reach many homes in the Chalke Valley. STaB is also published on the Bishopstone Village website: www.bishopstone-salisbury.co.uk

Price per year: 10 editions (Aug/Sept & Dec/Jan are joint editions)

Occasional adverts can be paid for at a pro-rata rate (1/10th of the annual rate per issue)

<p>Full page</p> <p>13x19cm</p> <p>£110 per annum</p>	<p>Half page</p> <p>13x9.5cm</p> <p>£60 per annum</p>	<p>Quarter page</p> <p>Portrait 6.5x9.5cm</p> <p>£30 per annum</p>	<p>Quarter page</p> <p>Landscape 13x5cm</p> <p>£30 per annum</p>
---	---	--	--

How to place your ad in STaB

1. Make a .pdf, .jpeg, or Word file of your ad, making sure it is the correct dimensions for publication (see table of sizes and prices above) and that it will reproduce well in black and white.
2. E-mail the file to Sarah Brough (ads.stab@gmail.com), stating what size of ad you would like, and how long you would like it to run for.
3. The deadline for publication is 5pm on the 20th of each month. Please send ads as early as possible.
4. When you have placed your order, you will receive an invoice with details of payment by cheque or bank transfer. Please pay within 14 days. Donations always welcome.
5. The Editor reserves the right to edit all contributions.

Answer to the question in Sarah's Gardening Tips: Spruce, Pine and Noble Fir.

BISHOPSTONE PARISH COUNCIL

Councillors	Telephone
John Gibbon (Chairman)	01722 718551
Ali Thorne (Vice Chairman)	07768514133
Norman Barter	01722 780471
George Brutton	01722 718539
Anita Smith	01722 781213
Piers Edwards	01722 780079
Michelle Tatner	07968 842525
Parish Clerk	
Mike Ash Lower Thatch Flamstone Street Bishopstone SP5 4BZ	01722 781044 bishopstoneclerk@btinternet.com
Further information is on the village website: www.bishopstone-salisbury.co.uk	

THE VILLAGE HALL COMMITTEE MEMBERS

Chairman - Norman Barter	780471
Treasurer - Francis Taylor	780316
Entertainments - Sue Taylor	780316
Event bookings - Caroline Ash	781044
Hall bookings - Margaret Barter	780471
Hall maintenance - Nigel Peasley	780713
Minute secretary - Virginia Middleton-Smith	780444
Member - Pat Abbott	780002

The Village Hall is an important resource and offers a venue for a wide variety of events for the benefit of all. The Hall is supported by a large group of dedicated local people in addition to the Committee. We hope you will support events whenever you can and if you would like to join the wider group of Friends of the Village Hall then please contact any member of the committee.

Bishopstone Village Website

www.bishopstone-salisbury.co.uk

The village website carries a wealth of information about Bishopstone. There are pages devoted to the church, the Parish Council, what's on at the Village Hall, meetings, clubs, local organisations and village walks. There are even digital copies of this magazine.

If you want to have any information included on the website please contact either

Mike Ash (bishopstoneclerk@btinternet.com)

Or Roger Stockton (rogerstockton@icloud.com)

Bishopstone Area Covid Co-ordinators

Name	Part of village	Telephone Numbers
Jane Peasley	Croucheston	07746 573391
Jane Stocker		07761 805469
Amber Cotton	Flamstone Street	07515 807251
Dani Humphrey		07811 117453 01722 781056
Sarah Brough	Netton Street and Netton Island	07825 442110 01722 780684
Cally Edwards Piers Edwards	Butt Lane, Netton Close and Stanley Close	01722 780079 07968 797168
Kate Pendlenton Rob Pendlenton	The Croft and Harvest Lane	01722 780655 07769 202200
Sarah Brough	The Styles	07825 442110 01722 780684
Michelle Tatner	Pitts Lane and High Road	07968 842525
Jan Goodfellow	Whitlock Rise and Meadow View	07919 376814 01722 719045
Sarah Blank	Faulston	01722 780664
Nicky Rigg	Manor Farm and Throope	07786 806914
Olivia Wilson	Blandford Road	07773 844825
<p>Please contact your Co-ordinator if you need help with shopping etc, or to arrange for prescriptions to be collected from Sixpenny Handley. If you are unable to reach the Co-ordinator for your part of the village, and the matter is urgent, please phone one of the others who will try to help. Please do not leave a message if you need help urgently in case your coordinator cannot get back to you in time.</p>		

If there are any problems with the delivery of STaB please contact Sue Porter on porter1totalserve@gmail.com or 01722 780459.




Services in Chalke Valley Benefice - December 2020

BCP = Book of Common Prayer (Traditional Language), CW = Common Worship (Contemporary Language)



Pattern of services for the re-opening of our churches for public worship. Please note that if the Covid 19 situation changes, these service details might also change. Please check your church noticeboard and weekly e-bulletin

6 December 2nd Sunday of Advent	9.30am 9.30am 11.00am 11.00am 11.00am	Parish Communion (CW) Parish Communion (CW) Family Communion (CW) Family Communion (CW) Morning Service	Broad Chalke Britford Ebbesbourne Wake Coombe Bissett Odstock	Catherine Blundell Jenny Taylor Catherine Blundell Jenny Taylor Anna-Claar T-Rosingh
13 December 3rd Sunday of Advent	9.30am 9.30am 11.00am 11.00am 11.00am 3.00pm	Family Communion (CW) Parish Communion (CW) Morning Prayer (BCP) Family Communion (CW) All Age Service Service for Advent Season	Nunton Bowerchalke Charlton All Saints Coombe Bissett Alvediston Fifield Bavant	Anna-Claar T-Rosingh Roger Leake Anna-Claar T-Rosingh Jenny Taylor Biddy Trahair Biddy Trahair
20 December 4th Sunday of Advent	8.00am 9.30am 9.30am 11.00am 11.00am 11.00am 3.00pm	Holy Communion (BCP) Parish Communion (CW) Parish Communion (CW) Parish Communion (CW) Morning Prayer (BCP) Parish Communion (CW) Crib Service	Bowerchalke Odstock Bishopstone Berwick St John Ebbesbourne Wake Homington Nunton	Roger Leake Anna-Claar T-Rosingh Jenny Taylor Catherine Blundell Biddy Trahair Jenny Taylor Anna-Claar T-Rosingh
23 December	6.00pm	Nativity Procession and Carols by Firelight	Alvediston	Catherine Blundell
24 December CHRISTMAS EVE	5.00pm 6.30pm 7.30pm	Communion round the Crib Crib Service Family Communion	Bishopstone Homington Nunton	Jenny Taylor Jenny Taylor Anna-Claar T-Rosingh
25 December CHRISTMAS DAY 	9.30am 9.30am 9.30am 9.30am 11.00am 11.00am 11.00am 11.00am	Family Communion (CW) Family Communion (CW) Parish Communion (CW) Parish Communion (CW) Parish Communion (CW) Parish Communion (CW) Family Communion (CW) Family Communion (CW)	Bowerchalke Broad Chalke Britford Odstock Charlton All Saints Berwick St John Coombe Bissett Ebbesbourne Wake	Roger Leake Catherine Blundell Jenny Taylor Anna-Claar T-Rosingh Anna-Claar T-Rosingh Roger Leake Jenny Taylor Catherine Blundell
27 December 1st Sunday of Christmas	10.00am	Short Benefice Communion (CW)	Bishopstone	Catherine Blundell
3 January 2021 THE EPIPHANY	9.30am 9.30am 11.00am 11.00am 11.00am	Parish Communion (CW) Parish Communion (CW) Family Communion (CW) Family Communion (CW) Morning Service	Broad Chalke Britford Ebbesbourne Wake Coombe Bissett Odstock	Roger Leake Jenny Taylor Roger Leake Jenny Taylor Anna-Claar T-Rosingh

Ministry Team:

Team Rector ~ The Revd Catherine Blundell: 01722 780134

Team Vicars ~ The Revd Canon Jenny Taylor: 01722 503081, The Revd Dr Anna-Claar Thomasson-Rosingh: 01722 238267

Curate ~ The Revd Roger Leake: 07947149456 Licensed Lay Minister ~ Mr David Blundell: 01722 780134

Team Administrator ~ Mrs Emily Broomhead: 07890 262376

URC Ministers ~ The Revds Ana & Tod Gobledale 01722 330980, The Revd Jackie Lowe: 01722 780008

Assisting Ministers:

The Revd Canon Ann Philp: 01722 555178, The Revd Kate Rosslyn Smith: 01722 780011

Lay Worship Leaders: Yvonne & Kevin Follett: 01747 828785, Caroline Lamb: 01722 780789, Sally Leaver: 01722 780447, Naomi Martin: 07713031774, Don Morgan: 01722 718557, Richard Morgan: 01722 338868, Adrian Taylor: 01722 325862, Gill Riley: 01722 780538, Janet Roe: 01725 519242, Biddy Trahair: 01722 780666, Rhoderick Voremberg: 07785 304142, James Wardroper: 01722 718152



Services in Chalke Valley Benefice - January 2021



BCP = Book of Common Prayer (Traditional Language), CW = Common Worship (Contemporary Language)

3 January THE EPIPHANY	9.30am	Parish Communion (CW)	Broad Chalke	Roger Leake
	9.30am	Parish Communion (CW)	Britford	Jenny Taylor
	11.00am	Family Communion (CW)	Ebbesbourne Wake	Roger Leake
	11.00am	Family Communion (CW)	Coombe Bissett	Jenny Taylor
	11.00am	Morning Service	Odstock	Anna-Claar T-Rosingh
10 January BAPTISM OF CHRIST	9.30am	Family Communion (CW)	Nunton	Anna-Claar T-Rosingh
	9.30am	Parish Communion (CW)	Bowerchalke	Catherine Blundell
	11.00am	Morning Prayer (BCP)	Charlton All Saints	Anna-Claar T-Rosingh
	11.00am	Family Communion (CW)	Coombe Bissett	Jenny Taylor
	11.00am	All Age Service	Alvediston	Biddy Trahair
	3.00pm	Evening Prayer (BCP)	Fifield Bavant	Biddy Trahair
17 January 2nd Sunday of Epiphany	9.30am	Parish Communion (CW)	Odstock	Anna-Claar T-Rosingh
	9.30am	Parish Communion (CW)	Bishopstone	Jenny Taylor
	11.00am	Parish Communion (CW)	Berwick St John	Catherine Blundell
	11.00am	Morning Prayer (BCP)	Ebbesbourne Wake	Roger Leake
	11.00am	Parish Communion (CW)	Homington	Jenny Taylor
24 January 3rd Sunday of Epiphany	9.00am	Holy Communion (BCP)	Berwick St John	Roger Leake
	9.30am	Parish Communion (CW)	Charlton All Saints	Anna-Claar T-Rosingh
	9.30am	Family Communion (CW)	Broad Chalke	Catherine Blundell
	11.00am	Parish Communion (CW)	Bishopstone	Jenny Taylor
	11.00am	Family Service	Nunton	Adrian Taylor
	11.00am	Holy Communion (BCP)	Alvediston	Catherine Blundell
	11.00am	Morning Prayer (BCP)	Coombe Bissett	Roger Leake
6.00pm	Evening Prayer	Bowerchalke	Lay Led	
31 January CANDLEMAS	10.00am	Benefice Communion (CW)	Ebbesbourne Wake	Catherine Blundell
	10.00am	Benefice Communion (CW)	Homington	Anna-Claar T-Rosingh
7 February 2nd Sunday before Lent	9.30am	Parish Communion (CW)	Broad Chalke	Catherine Blundell
	9.30am	Parish Communion (CW)	Britford	Jenny Taylor
	11.00am	Family Communion (CW)	Ebbesbourne Wake	Catherine Blundell
	11.00am	Family Communion (CW)	Coombe Bissett	Jenny Taylor
	11.00am	Morning Service	Odstock	Anna-Claar T-Rosingh

STaB Selling Spot

Various speakers suitable for home audio use, in good condition.



- A pair of Q Acoustics square white bookshelf speakers, approx 20cms
- A pair of KEF T101 oblong white bookshelf speakers, approx 12x30cms
- A pair of Meridian black free-standing speakers approx 30x50cms high
- Also a PA system amp: Meridian HA 104M



If interested make an offer; all money to go to Bishopstone Church. M Barter, 780471.

Indian Rug, brown, spiral circle, hand-tufted. Size 140 x 140cm, 100% pure wool. £25 ono. Money to go towards STaB publication. Olive Moody 780446.

Letters to the Editor

Letters to STaB are very welcome, but the views expressed may not be those of the editorial team or the Parish Church Council.

Sally Leaver has kindly given to the church this lovely bench in the churchyard in memory of David. I would have sat for a while but it was drizzling. However Twigs was more than happy!

Alix Ricketts



I'm sure I speak on behalf of all our village when I want to thank Sarah Brough so very much for stepping to do the advertising for our wonderful magazine.

Alix Ricketts

Christmas Windows

As mentioned in the last edition of STaB, Sarah Blank has had the lovely idea for as many of us as possible to decorate our street-facing windows for Christmas. Helen Clarke has been rallying the residents of Pitts Lane, and many of the local mums have also expressed enthusiasm about taking part with their children. It's great to see so many people hoping to join in! Anyone looking for inspiration might like to look at the Window Wanderland website, or simply browse Pinterest for ideas.



If you don't feel personally able to decorate a window, you can be part of the whole experience by taking a walk around the village, perhaps at dusk one evening for a 'Winter Wander', to admire people's creativity. Hopefully this will be a fun way of getting into the festive mood in

this strangest of years.

