



Parish Magazine

February 2021



Morning Light above Throope

Photo by Robert Pendleton

STaB is published by the Parochial Church Council and delivered free of charge to every home in Stratford Tony and Bishopstone. We hope you find it interesting and informative. **Donations towards publication costs are always welcome.**

Donations should be made payable to Bishopstone Parochial Church Council and sent to: The Treasurer, Bishopstone PCC, Ebble Cottage, Mill Lane, Bishopstone, SP5 4BG. Please state on a cover note that it is for STaB.

The views in this magazine are not necessarily those of the PCC.

Editor: Kate Pendlenton: 01722 780655

Editorial Team: Robert Pendlenton 780655; Cally Edwards: 01722 780079

Lizzie Williams: 01722 780905

Email: **teamstab2019@gmail.com**

Advertising

Sarah Brough: 07825 442110

E.mail: **stabads@outlook.com** (*please note new e.mail address*)

Any articles for inclusion are to be submitted by 5pm on the 20th of the month to appear in the next issue - *unless the magazine is already full.*

The editors reserve the right to edit all contributions.

Note from the Editorial Team



As you will have seen in the last edition, we have had a change of advertising coordinator from Rachael to Sarah. Sadly, after a huge battle with technology, we were unable to transfer the old STaB Advertising e.mail address to Sarah, and that account is now inaccessible. If you need to contact us regarding advertising, please use the new e.mail address above, and if you have recently sent anything to the old address and not received a reply, please resend it to this new address. (The teamstab2019 address remains active for general editorial e.mails).

A warm welcome to...

Please let us know if you know of anyone who moves into Bishopstone or Stratford Tony - or indeed if you yourself have recently moved in, do introduce yourselves! - so that we can offer them/you a welcome in STaB.



Hello from the Revd Canon Jenny Taylor



No doubt as you read this you are hunkering down as we are becoming used to Lockdown as a way of life! I do so hope you are all keeping well. I think the effort everyone is making to keep each other safe is so heart-warming.

One difference with this Lockdown is that Churches are allowed (at the time of writing!) to continue offering public worship which is why there is a service rota in this month's magazine. However, we are judging the situation week by week and services may be cancelled with short notice so please keep an eye on Facebook, the Village Website and various Notice Boards.

When we do hold our services we have completed and reviewed a Risk Assessment and all safety procedures to minimise risk are in place including hand sanitiser, test and trace records, well-spaced seating and no congregating inside or out. We, of course, still do not sing and receive communion in one kind only.

We are hoping so much to be able to offer services in Lent and into Easter but, as with everything, we must wait and see.

The Church of England has prayed this prayer throughout this pandemic – please make it yours:

*Keep us, good Lord,
under the shadow of your mercy in this time of uncertainty and distress.
Sustain and support the anxious and fearful,
and lift up all who are brought low;
that we may rejoice in your comfort
knowing that nothing can separate us from your love
in Christ Jesus our Lord. Amen.*

Chalke Valley Team Ministry - Parish of Bishopstone and Stratford Tony
Team Rector: The Revd Catherine Blundell 01722 780134
Team Vicar responsible for Bishopstone and Stratford Tony: The Revd Canon Jenny Taylor 01722 503081
Church Wardens: George Brutton 01722 718539 Sarah Seal 01722 780305
Lay Pastoral Assistants: Sally Leaver 01722 780447 Sheila Nell 01722 781120
Team Administrator: Emily Broomhead 07890 262376 thechalkevalleychurches@gmail.com

Parish Council

A meeting of Bishopstone Parish Council took place on Thursday 14th January using Zoom Video Conferencing. Councillors Gibbon, Thorne, Barter, Brutton, Edwards and Tatner joined the meeting, as did Roger Stockton, Emergency Planning Officer, and four members of the public.

The main agenda items discussed were:

- (i) Tree Planting in the Village. The Council considered the issue raised by Harry Williams at the meeting in November concerning the need to encourage more tree planting in the village. It was recognised that the Government has set a target of establishing 30,000 ha of new woodland in England by 2025 as part of its strategy to combat climate change. At a more local scale, there has been a net loss of trees in the village over the last few years as a result of infection (e.g. Ash die-back), and the fact that many trees have reached maturity and become dangerous. Tree planting could have a role to play in mitigating the threat of flooding from the River Ebble. It was pointed out that under the Government's revised arrangements to encourage "greening" by farmers, new areas of woodland are already being planted in the village. It was agreed to consider further options for tree planting in the unused corner of the Recreation Field and to mount a campaign to encourage replacement tree planting more widely in the village.
- (ii) Superfast Broadband. Roger Stockton presented a report on the scheme to bring Superfast Broadband services to the western end of the village. This is reported separately in this edition of STaB.
- (iii) Emergency Planning. Roger Stockton said he was completing an update of the Village Emergency Plan preparatory to handing over to a new Emergency Planning Officer. The question of who would take over from him was being pursued. Michael Pratt had agreed to take over from Chris Sexton as the Flood Warden (East). The emergency equipment had been tested and additional items purchased. Cllr Gibbon thanked Roger for all that he had done over the years to put in place emergency response arrangements in the village.
- (iv) Census 2021. Mike Ash reminded the meeting that a National Census is due on Sunday 21st March. Everybody is required to take part. Household returns will be made on-line. Instructions, with access codes for the return, will be delivered through the post. Inevitably there will be those who will have difficulty with these arrangements and it will be important for families and friends to help where needed. Help will also be available over the telephone and it will be possible to opt to submit a paper version of the questionnaire. Further information about the Census will be carried on the Village Website.

(v) Future business. Mike Ash said that Parish Council meetings would continue to be held remotely for the present, but this would be difficult for the Annual Parish Meeting, due in March. It was agreed to delay the APM until at least May. A separate note about this, and the local election, due in May, is elsewhere in this edition of STaB (see below).

The next meeting of the Parish Council is due to be held on Thursday 11th March 2021 at 7.00pm using Zoom video conferencing.

Bishopstone Annual Parish Meeting and PC Business

Parish Council Meetings

During the pandemic the Parish Council has continued its normal cycle of meetings, but held remotely via Zoom Video Conferencing. Members of the public have a right to attend meetings and this has been arranged as necessary. Notice of meetings continues to be posted on notice boards and on the village website (www.bishopstone-salisbury.co.uk). If you wish to join a particular meeting let me know (bishopstoneclerk@btinternet.com) and a link will be sent to you.

Annual Parish Meeting

The Bishopstone Annual Parish Meeting, which residents can attend and raise for discussion any issue they wish concerning the village, normally takes place in March. It is unlikely that it will be possible to hold this meeting remotely so it will not be held in March this year. The statutory requirement is for the meeting to be held between 1st March and 1st June. The decision has been taken to delay the Bishopstone meeting until a date to be agreed in May to see whether it is possible to hold it then. The Government may yet cancel, or postpone, these meetings until the Autumn.

Wiltshire Council and Parish Council Elections

Elections for Wiltshire Councillors and for all seven places on Bishopstone Parish Council are due to take place on 6th May 2021. The Government has indicated that these elections will go ahead, but that this decision will be kept under review. Voting will be either at Covid secure polling stations, by postal vote or by proxy (someone voting on your behalf). Anyone who is shielding, or who would prefer not to attend the polling station, should apply for a postal or proxy vote.

In the meantime, if you think that you might be interested in standing for election to the Parish Council, please feel free to contact me for information about what is involved.

Updates on the above matters will be included in future editions of STaB and on the village website.

Mike Ash, Clerk, Bishopstone Parish Council

Coronavirus Update



The good news is that many in the village have now received the first dose of the Covid-19 vaccine, with others to follow over the next few months. The bad news is that the risk of infection remains VERY HIGH, with a number of confirmed positive cases in the village. Recent figures show that of the ten areas in Wiltshire with the highest Covid-19 infection

rates (above 800 per 100,000 population) six are in and around Salisbury.

PLEASE THEREFORE FOLLOW THE GOVERNMENT'S GUIDANCE:

You must not leave your home, except where absolutely necessary. You may leave the home to:

- shop for basic necessities, for you or a vulnerable person
- go to work, or provide voluntary or charitable services, if you cannot reasonably do so from home
- exercise with your household (or support bubble) or one other person, this should be limited to once per day, and you should not travel outside your local area.
- seek medical assistance or avoid injury, illness or risk of harm
- attend education or childcare - for those eligible

If you do leave home for a permitted reason, you should always stay local - unless it is necessary to go further, for example to go to work. Stay local means stay in the village where you live.

Comprehensive guidance continues to be available on the Government's website <https://www.gov.uk/coronavirus> and via the village website. If you are elderly or in one of the vulnerable groups and need help with shopping, or anything else, please contact your Area Co-ordinator (see list at the back of this STaB). The village arrangements for the collection of prescriptions from Sixpenny Handley Surgery remain in place.

Remember: people over 60 years of age, or those who are clinically vulnerable, are at higher risk of severe illness from coronavirus. In Bishopstone over 40% of the population are over 60 years of age, with a large number classified as clinically or extremely vulnerable. This puts a particular responsibility on us all to protect ourselves and to protect others.

IT IS OF VITAL IMPORTANCE THAT EVERYONE TAKES THE OPPORTUNITY TO HAVE A VACCINATION WHEN IT IS OFFERED.

Bishopstone Emergency Planning Group



Bishopstone Prescription Collection - Drivers Needed

Over the last ten months, since the start of the pandemic in March 2020, a dedicated team of drivers from Bishopstone has collected prescriptions from the dispensary in Sixpenny Handley for those elderly and vulnerable living in the village. We all owe a huge debt of gratitude to them. Recently the number of drivers available has reduced slightly, and it would anyway be good to increase the number of drivers so that the frequency of the trips they have to make is reduced. If you are not in one of the Covid-19 vulnerable groups and are prepared to help, can you please contact Caroline Ash (01722 781044).



Surviving Winter Fund



Wiltshire residents can claim up to £250 to help with their heating and fuel bills over the cold period. To be eligible, applicants will need be in receipt of a means tested benefit, of pension age, or of working age and receiving a disability benefit (or someone in the household has a health condition worsened by the cold).

To apply call Wiltshire Council's advice line number on 0800 038 5722, or you can upload required evidence on line at:

www.cse.org.uk/advice/how-we-can-help/warm-safe-wiltshire-surviving-winter-grant

The Surviving Winter Fund is first come first served, and the deadline will be in May. If the grant money runs out Wiltshire Council can look at other funds you may be eligible for, so please contact the fund as soon as you can.

Surgery Queries

Obviously our local Doctors' Surgery is extremely busy at this time, but they are aware that many residents have concerns about issues such as the reopening of Broadchalke Surgery. If you are struggling to contact them, but have a query about the Broadchalke site and the practice in general, please e.mail it to the editorial team at teamstab2019@gmail.com, and we will pass them all on to a member of surgery staff who has offered to attempt to address them in the next issue of STaB.

Village Hall



February 2021

Sadly the Village Hall remains completely closed due to the continuing pandemic and no events will be taking place during February.

However, just as soon as the situation improves, all the usual events will return!

HALL BOOKINGS FOR SOCIAL EVENTS AND WORKSHOPS

Both halls will be available for hire once restrictions are lifted. To enquire or make an advance booking, please contact the bookings secretary Margaret Barter 01722 780471

BISHOPSTONE COMMUNITY CAFE

A fortnightly coffee morning, allowing people to meet in an informal setting. Normally open between 10.30am until 12.00noon on alternative Thursdays.

BISHOPSTONE COMMUNITY LUNCHESES

Home-cooked and delicious lunches served once a month, usually accompanied by a guest after-lunch speaker.

MOVIOLA at Bishopstone.

Monthly screenings of popular cinema releases.

BABY AND TODDLER PLAYGROUP

For general information about the Baby and Toddler Group find their Facebook page Bishopstone Playgroup, or contact Kate Pendleton on 01722 780655 or email: kmpendleton@hotmail.com . Sadly the group are not meeting at present.

“EXTEND” EXERCISE CLASSES

For information about these exercise classes contact Jenny on 01722 780863, email: jennyberwynjones@yahoo.co.uk

PILATES AT BISHOPSTONE

Contact Claudine on 07788 587937

YOGA WITH HANNAH

For more details please contact Hannah Stocker on 0773 856 1888 or by email: yoga_with_hannah@outlook.com.

SARUM SPINNERS AND WEAVERS

For more detail about the group please contact Les Smith on 01722 780761.

THE FAMOUS VILLAGE CHRISTMAS CARD

The 'Village Card', traditionally signed at the Christmas Fayre, offered an opportunity to send good wishes and donate to a worthwhile cause.

As announced in the December edition, this had to be changed to a 'Virtual Card'.

A total of £350.00 was raised and this has been given to the Salisbury Hospital Stars Appeal, in addition to some direct donations.

This is the highest amount ever raised and the Village Hall trustees thank all those who donated and on their behalf, wish everyone a very happy and altogether better time ahead!



Rugby Update

Bishopstone Rugby Enthusiasts: Due to the on-going Covid restrictions and closure of the Village Hall it is with regret that we will be unable to show any of the forthcoming Six Nations matches. This will be kept under review and if circumstances changes, we will review our plans accordingly.

Andy Stocker



Village Hall 100 Club Winners

	£50	£20	£10
Oct 20	G Brutton	I Murray	D Stirling
Nov-20	J Atkinson	A Grumett	S Cooke
Dec-20	F Stimpson	R Colwill	N Legh

Bishopstone Village Hall rates for private hire

Bishopstone Village Hall has 2 rooms that are available for hire for a wide range of functions. The larger room is ideal for children's parties with lots of space for running around. It can also accommodate wedding receptions, charity functions and large family celebrations.

The smaller room (The Memorial Room) is a good size for meetings and smaller gatherings.

The modern kitchen is spacious and fully equipped with an electric catering range, a professional 4 minute dishwasher, water boiler, hot cupboard, microwave oven, 2 fridges and a freezer, all suitable for professional caterers. There is also glassware, crockery and cutlery for over 80 people.

The hire charges include use of heating and electricity.

The rates are currently:

	Villagers	Non Villagers
Hire of both rooms (With full use of the kitchen)	£15 per hour	£20 per hour
Hire of both rooms (With tea making facilities but no other electrical kitchen equipment)	£10 per hour	£15 per hour
Full use of the kitchen <u>only</u>	£10 per hour	£15 per hour
Weddings – per event/day	£150	£250
Parties – per event/day	£100	£150

Broadband

An additional charge is made for use of the broadband connection of £6 per hour with a maximum of £25 per day.

Large projection screen

Use of this professional quality screen is charged at an additional £10 per event.

The hire period must include time to set up and clear away after the event.

For further information and bookings contact: Margaret Barter 01722 780471

Chalke Valley Community Support

POLICE

Call 999 in an emergency: an emergency is when someone is being threatened or at risk of getting injured, or a crime is in progress.

Call 101 for non-emergencies: such as reporting a crime that has already taken place, non-urgent incident, contacting local officers etc

You can also contact local Police as follows:

PCSO Matthew SMITH – matthew.smith@wiltshire.pnn.police.uk

PCSO Simon WARD - simon.ward@wiltshire.pnn.police.uk

PC James BARRETT - james.barrett@wiltshire.pnn.police.uk

PC Matt HOLLAND – Community Policing Co-Ordinator

CPTSouthWiltshire@wiltshire.pnn.police.uk (*e.mail address for general enquiries*)

Community Messaging – for emailed crime reports and local policing updates, sign up at www.wiltsmessaging.co.uk

Social media – for local policing updates follow us on Facebook

@salisburypolice and Twitter **@SouthWiltsCPT**



Sixpenny Handley and Chalke Valley Practice

Doves Meadow Surgery, Broad Chalke: 01722 780282

BROAD CHALKE SURGERY CURRENTLY CLOSED

We hope to be able to bring you news on this in the next issue of STaB.

Sixpenny Handley Surgery: 01725 552500

www.sixpennydocs.co.uk



STaB draws attention to the support being provided in the village by the Parish Council and the Emergency Planning Committee. But help is also available from Wiltshire Council.

If you are self-isolating due to coronavirus (COVID-19) and you need help you can call the helpline on: 0300 003 4576



STAY HOME STAY SAFE

**For vulnerable people
in need of support call**

0300 003 4576

#WiltshireTogether



Wiltshire Council

The Trussell Trust

Donations received for Dec 52.1 kgs - Cheques in total of £175 and for Jan 26.00 kgs plus £120 in cheque and cash. Thank you for your continued generosity.

At the present time they are still asking in particular for:-

Long Life Fruit Juice
Instant Mashed Potato
Sponge Puddings
Bars of Chocolate



If you can provide any of these which they are very short of at the present time they will be very grateful, but really anything you feel you can offer will be so useful during this lockdown .

As usual, if you wish to donate money (cash or cheque made out to Salisbury Foodbank) instead of food you can as normal leave it with me to take for you or you can go online and donate directly to the Salisbury Foodbank, either a one off or a regular payment which can also be Gift Aided if you are able.

Payments made to The Trussell Trust now go to the central office and can be sent anywhere in the country so please keep this local and make your payments to Salisbury Foodbank .

Continue to leave your donations at The Old Post Office, The Cross, either ring the doorbell or leave them on the step. If you cannot get them to me then please phone me and I will arrange for someone to collect at your convenience.

I have been asked where donations of clothes and furniture can be made; unfortunately they are not taking anything in any of their shops at this time as they are all closed due to lockdown. I will keep you updated on this situation.

Blessings,

Judy Barrett (01722 780306)

The Friends of Bishopstone Church

If you would like to help the Friends of Bishopstone Church with their work of preserving the fabric of this beautiful building, please contact the Treasurer Norman Barter (01722 780471).

Still Rambling On

It is now two months since the last edition of STAB, and we are well and truly 'locked down' once again. Time passes slowly, and we are all getting a bit confused with the days. Is it Monday or Sunday today??



Well, I've solved it ... Tuesday ... and time for some more rambling. The weather is no longer really suitable for rambling, more for hard and serious walking, so we have only been out for a few walks this year. We enjoyed walks before Christmas with the family in the Cathedral Close, but that was beginning to get a bit crowded. But the fudge in Roly's Shop by the Close gate was a good draw! We saw the family over Christmas, but only managed a closed down version at home here. Nonetheless, we made up for it with the decorations and the tree, still alive in the garden, and a turkey!

It is a joy to see so many dogs being walked through the Croft and in the village. Our last walk on a fine Sunday morning was a delight, as we met several people, including a couple from Ford enjoying the sun, and also many dogs taking their owners out. Walking's not the same without Zinnie, but we are still looking! But it was all very friendly and very encouraging in this difficult time. I am awaiting a visit from my little friend to see my miniature soldiers in the study window!



The surgery, now based entirely in Sixpenny, is doing great stuff, with their inoculation centre in the Michael Herbert Hall in Wilton, and the normal work in the surgery. It is a real credit that they manage to do so much in this very difficult time, and we thank them all for their excellent service. The use of phones and internet has saved countless journeys and given immediate help. The 111-emergency service is also as efficient as ever, as we had to use them recently, only to find all was well.

The valley is waking now for spring, and perhaps we can begin to look forward to better and warmer weather, and more cheerful and easy walks and rambles. The garden is in poor shape, as they all seem to be now, but under the leaves and cuttings life is stirring. We have had our first snowdrops and some camellias, and the daffodils are coming on well too.



As it all gets better, and perhaps more of us receive the inoculation, we can all get out, perhaps the White Hart will open again, and we can meet in person again. We hope so and wish everyone a happy Spring and continuing good health.

HAPPY NEW YEAR AND AN EARLY END TO RESTRICTIONS! *James Thompson*

Bishopstone Superfast Broadband Project

WHAT DID WE DO?

In October's STaB we reported on progress with the Community Fibre Partnership Openreach Fibre to the Premises (FTTP) scheme to introduce faster broadband to the western end of the village. The eastern end of the village is already served by FTTP.

We had requested property owners to contact us if they wished to participate in the scheme. Some 71 properties registered an interest, 10 of which were classified in our application as businesses.

SO WHAT HAPPENED?

In the days before Christmas we had a response from Openreach proposing a FTTP project in the village. The budgetary cost of such a scheme would be £76,283.00.

As reported previously, grants are available of £1500 for a private property and £3500 for a business to help meet the costs of CFP projects. Therefore, in theory, if all the properties that have registered an interest sign up, the grant scheme will cover the budgetary cost of the project.

NOW WHAT?

Our current perception is that the budgetary estimate is likely to increase as Openreach carry out more detailed ground surveys. With this in mind we request that anyone who has not registered an interest in the scheme and would now like to be included should contact the Parish Clerk, with details of their name, address and phone number as soon as possible. This will allow us to amend our input to the Community Grant Scheme and have more funding available.

All those who have registered an interest will be contacted in the near future to seek their agreement to formally take up the offer of inclusion in the scheme.

ARE THERE ANY COMMITMENTS IF I SIGN UP?

If you do take up the offer there is an obligation to sign up to a download speed of a minimum of twice that currently received by the property. So a household or business currently receiving 40Mbps would be required to sign up to a download rate of 80Mbps for a period of 12 months from installation.

The average speed throughout the village is 35-40Mbps, with higher speeds of about 80Mbps and speeds of only 12-15Mbps in outlying areas.

COST?

The cost to participants of the faster service will depend on who your supplier is, and the speed selected. In next month's STaB we hope to have some cost comparisons for upgrading from the four suppliers in this area - BT, Sky, Virgin and

TalkTalk.

WHY WOULD I WANT A FASTER SPEED?

As we have found out during Covid lockdowns we are evermore dependent on fast broadband speeds, be it for conference calls, downloading of data, films or games, internet services such as Netflix, SkyQ, Ring door bell, Xbox or security cameras.

FTTP delivers faster speeds that can be guaranteed, no loss of speed at peak times (e.g. homework time).

Unfortunately it is also a fact of life today that data fills the available space. Programmes are becoming exponentially more complex, with more detail, clarity and content. This alone is an excellent reason to sign up.

The differences between FTTC (our current system) and FTTP can be found at: www.OpenreachADSL/FTTC/FTTP explained.

HOW DISRUPTIVE WILL INSTALLATION BE?

The new fibre for FTTP is usually delivered via existing poles and ducts and will come using the current route.

WHAT NEXT?

We can still add properties to the scheme - however please be quick. Once we have a Final Offer from Openreach that will be a confirmed price and when a contract is signed, in our case this is expected to be by the Parish Council who would be the Legal Entity (LE), the price is fixed irrespective of whether it costs Openreach more than expected.

PROJECT TEAM

A small project team is being put together who will take this project forward. The team will contact those who have registered an interest to set out next steps. Many thanks are due to Roger Stockton and Mike Ash for their considerable efforts on this project to date.

Roger Stockton

As you will see further on in this edition, we have a few gaps in the Adverts section of the magazine. We have, understandably in these difficult times, lost some of our previous advertisers.

If you know of any local businesses who might be interested in advertising in STaB please let them know about us. As you can see from the Rate Card on p44 of this issue, our rates are extremely reasonable. The magazine is delivered to over 300 homes in the Parish, so a huge potential customer reach for a very small outlay (prices from only £3 per issue for a quarter page).

Sarah Brough coordinates the advertising, and can be reached on

stabads@outlook.com, or 07825 442110.

Joyce Margaret Dimmer - Her Life

By her son, Graham Dimmer

Joyce was born on 26th May 1926 in Portsmouth, all her schooling was carried out there.

Because of the bombing, at the beginning of the war Fred, Agnes and Joyce Kay moved to stay with relations in Tisbury. Joyce began working at Walshe's, a drapers shop at the top of the main street.

At eighteen she moved to RAF Chilmark to manage the canteen. It was here she met a tall handsome RAF officer and in 1946 they married. I was born later that year; unfortunately the marriage failed.

Joyce then met Laurence Dimmer and in 1954 they married, when mum and I moved to Broadchalke in a bungalow in High Lane that H G Blick built.

Mum and Dad settled into Village life where mum would do lots of cooking for the Flower Show and Dad would show veg and enter the best garden competition.

Mum was a keen member of the local W.I. and for eight years she was either President or Treasurer.

She worked for Cecil Beaton for 7 years and for Gwen and David Hitchings for 23 years.

Now in their Late forties Mum and Dad went into business, painting and decorating and catering. They were a great team and things went from strength to strength.

Mum involved close friends like Eileen Gilbert, Silvia Emm, Elsie Gulliver and more as Wedding Receptions became their thing.

As the Catering grew she became reliant on more and more Chalke Valley girls, Pat Roberts, Ivy Ingram, Mavis Mullins, Ena Kingstone to name but a few.

One day mum received a call from a man who was arranging a local function for the Village to ask was Joyce doing a function on a certain date, if so he would change his as with all the Village women working for Joyce his function would fail.

When her grandson was home from university he was roped in as wine waiter, her granddaughter as a waitress and Dad was transport with Pat. I can remember the kitchen at Long Close being full of busy women and clip boards of lists with mum directing operations.

In 1992 they both retired not to stop, no, they were off to New Zealand with their neighbour of 28 years, Dolly Keating, for a couple of month's holiday at Dolly's brother in law's.



In 2005 Mum and Dad sold Long Close and moved in with me at The Croft.

In 2006 Mum, Dad, Doreen and I went to Canada for three weeks, cruising and train journeys.

They bought their last new car when we arrived home, a Honda Jazz and enjoyed many trips out.

Mum put up with Dad's train layout in the bedroom for several years and when he passed away in December 2015 my first job was to remove the train layout!

In her words "I was blessed with a great grand child on the 27th April 2012 and have enjoyed the times I spent with him"

Mum made many friends whilst here and enjoyed visits chatting with them but all the time her health was deteriorating until we could cope no longer and at Christmas 2019 she moved to Willow Croft Care Home where she was happy. I am afraid Covid 19 was hard for her as with no visitors time went slowly.

On Sunday 20th Dec after a visit from me, Steve and Kathryn in the afternoon the doctor was called, at 9.45 whilst holding my hand she went to sleep and never woke up.

I have received so many cards, letters and phone calls with wonderful comments about my mum I can't thank you all enough for loving MY MUM.



Covid-19 Vaccinations

I am sure that others in the village who have had their Covid inoculation will agree with me that the whole procedure was very well organised.

We were met at the door of the Michael Herbert Hall by a bevy of young people each with a job to do – take temperature, deliver hand sanitiser, proffer a leaflet about the vaccine, register you on the computer and give you a card with your time for leaving the hall. We then were ushered into the hall, seated and asked a few questions followed by the injection which was painless. A quarter of an hour sitting in a sanitised chair (time to read the leaflet) and look around to see if you knew anyone there to wave to. Up and out of the hall. So simple.

I did not park in the car park but I believe that Rotary were doing a good job with the parking of constant in and out vehicles, making sure that those with wheelchairs were well catered for.

Top marks for the surgery and the NHS and anyone else who organised everything.

Sally Leaver

Wiltshire Libraries Online Library



If you have, like many, taken refuge in a good book to while away the days of lockdown but are struggling to find new reading matter then Wiltshire Libraries may have the answer. Without leaving the comfort and safety of home, Wiltshire library members can download eBooks and eAudiobooks and read eMagazines by registering on the Wiltshire RBdigital website or the RBdigital app with a valid library card number and email address. Full details can be found on the Wiltshire Libraries website:

(<https://www.wiltshire.gov.uk/libraries>)

or by emailing libraryenquiries@wiltshire.gov.uk. The system is easy to use. You can browse the extensive catalogue of titles, place any titles that interest you in to a wishlist and download titles which are available or 'hold' titles which someone else has signed out. Loans are for 3 weeks and there is no charge.

If you prefer to hold a 'real book' in your hand, you can still reserve and collect books from the library on limited days. See the website for details:

www.wiltshire.gov.uk/libraries-order-collect

Rob Pendleton



Help for domestic abuse victims in Wiltshire is just a phone call away and available 24/7.

Swindon Domestic Abuse Support Service (SWA) is now providing support to victims of domestic violence **across the whole of Wiltshire** on behalf of Wiltshire County Council.

Whether you're male, female, young or old, you could need their help. Our lives are being affected by Covid restrictions and for many it's creating a dangerous and frightening situation. Home should be a place of safety and security and a relationship should be based on love and mutual respect but sadly for 2.3 million people a year this is not the case and victims face physical and psychological abuse, coercive control, rape and for two people a week in the UK, they will lose their lives at the hands of their partner or former partner.

Working alongside Trowbridge based Splitz Support Service who offer support weekdays 9am – 5pm, SWA cover Wiltshire outside these hours, evenings, night times, weekends and bank holidays. SWA support all victims regardless of age and gender and run a free, non-judgmental 24hr helpline that's answered day and night by a trained advisor, not a machine. They offer help and support and work with you and at your pace.

SWA whose patron is Dame Esther Rantzen, have a purpose-built refuge facility in Swindon comprising 22 self-contained flats and they offer extensive community support. Their advisors are trained in all areas of abuse across all age groups. If you are worried about your situation, you can call them in confidence on 01793 610610.

Swindon Domestic Abuse Support Service (SWA) is free and confidential, serving Swindon and the surrounding area. Our service operates 24 hours a day, 365 days a year, supporting both female and male victims of domestic violence, those in lesbian, gay, heterosexual relationships, those who are in fear of being forced into marriage and those who fall victim to honour-based violence. We also work with young people aged 16-25 years who may be experiencing domestic violence or abuse as part of an intimate relationship.

SWA operates a refuge which has been purpose-built and specially designed, with 22 individual flats it can accommodate lone females or families with children up to 18 years old and has a dedicated team of trained staff. In the community SWA has a network of Independent Domestic Violence Advisors (IDVA) who work with victims, within the Great Western Hospital, Doctor Surgeries and Health Centres across the town.

Our dedicated helpline – 01793 610610 – is available 24 hours a day, 365 days a year covering Swindon and extends to the county of Wiltshire every day 5pm – 9am, every weekend and bank holiday. Our helpline is answered by specialist domestic abuse advisor who can provide advice and support irrespective of the time you call - day or night.

Splitz - 01225 775276 Monday – Friday 9am – 5pm

SWA – everything outside these hours

Ebble Notes- Where have the Butterflies Gone?

When I was young, lapwings were a common sight. They nested in wheat and barley fields, amongst the wild grasses and flowers along with insects and small animals, but in the 60s the advent of chemical fertilisers and herbicides, together with newer hybrids gave far denser, better crops and yields, so there was no space for these birds. When the crops were harvested, men shot the escaping rabbits; a delicacy and a meat not rationed. Flocks of lapwings would then return to feed on insects and grubs in the stubble. The addition of insecticides and fungicides to these chemicals drastically reduced the need for traditional crop rotation. Thus farms become more monocultural, with fewer and less variety of food sources required to support the wide spectrum of insects, including butterflies, hence also invertebrates and small mammals. Similarly in the 1970s, plastic piping was introduced which made water troughs in fields possible, so many ponds used by cattle which had been surrounded by aquatic plants, bushes and trees, were levelled. In turn this meant a huge loss of habitat not just for birds, but species like butterflies, damsel flies, frogs and newts.

These days, with much reduced hedges, in numbers, height, spread and variety of plant and tree species, there is even less support for wildlife. The Coombe Bissett Down project is actively trying to remedy this by introducing new hedgerows, but they will take many, perhaps tens of years to mature as the basic ecosystem is absent, from the bacteria and fungi to the micro and macro flora and fauna, to the wide spectrum of wild plants and animals. Hedges also provide safe corridors, whereby animals and even birds can move about in safety.

In a similar way we have lost wildflower and aquatic meadows, which support many species of insects including butterflies, which in turn support mammals and many different species of birds. In addition aquatic meadows even hold more carbon than woodland, hence better efficacy against global warming.

Closer to home; since early November we have not seen a single goldfinch or greenfinch visiting our feeders, whereas last year we were seeing 10 at a time. However, blue, great and long-tailed tits are still common. One bonus this winter has been the common sight of a nuthatch upside down on the wire mesh of the sunflower feeder and on planters close to the house, but is this because there is less food in the countryside ?

The house martins are now long gone and from 6 nests there was a good crop of young. This was 8 nests down on last year, but some pairs have nested at Croucheston Farm this year after the exit of the swallows. We had 3 arrivals in early April, but they and others were a long time in returning with mates, so only 4 nests had time to produce 2 broods.

ChalkeyD

URGENT - Plea from Salisbury District Hospital

We are looking for assistance with two volunteer roles as described below.

Ward Buddies

This role supports ward staff to enable them to concentrate on the clinical tasks. Tasks will include moving equipment, answering the telephones, running errands, maintaining cleanliness of ward kitchen and general tidying up of patient areas, making patient drinks and delivering food. Full PPE will be issued as well as volunteer t-shirts. Enhanced buddy roles with more patient contact such as feeding some patients. These will require enhanced PPE. There will be a fast track deployment so most of the training will be on the job. We're looking for you to ideally commit to a 2 – 4 hour session once a week every week for the foreseeable future. Volunteers need to complete a health questionnaire and health risk assessment as part of the recruitment process in order to ensure a suitable match. Volunteers must be over 17 years of age, fit and able to do a full shift on their feet and feel comfortable working under their own initiative within defined parameters, in an environment that may feel pressured at times. Free parking at the hospital is available when on shift and/or reasonable travel expenses will be paid.

Mass vaccination centre volunteer

There is a new mass vaccination centre opening in the City centre from next week and potentially running through to the Summer. We are looking for volunteers to help marshal to move people through the vaccination hub from beginning to end, keeping orderly queue management and some administrative roles booking people in, etc. This role requires you to be stood on your feet for potentially long periods of time. We're looking for you to ideally commit to a 4 hour session once a week for at least a month. Surgical masks will be worn. A simple fast track recruitment process will take place including a health risk assessment. There will be on the job training. Free parking in Salisbury city centre will be available when on shift.

If you are interested in either or both roles, please email us on sft.volunteering@nhs.net stating which role is of interest, your name and contact details, and for the ward buddy whether you have any previous experience volunteering or working in a hospital or medical environment, which is not necessary but could be beneficial.

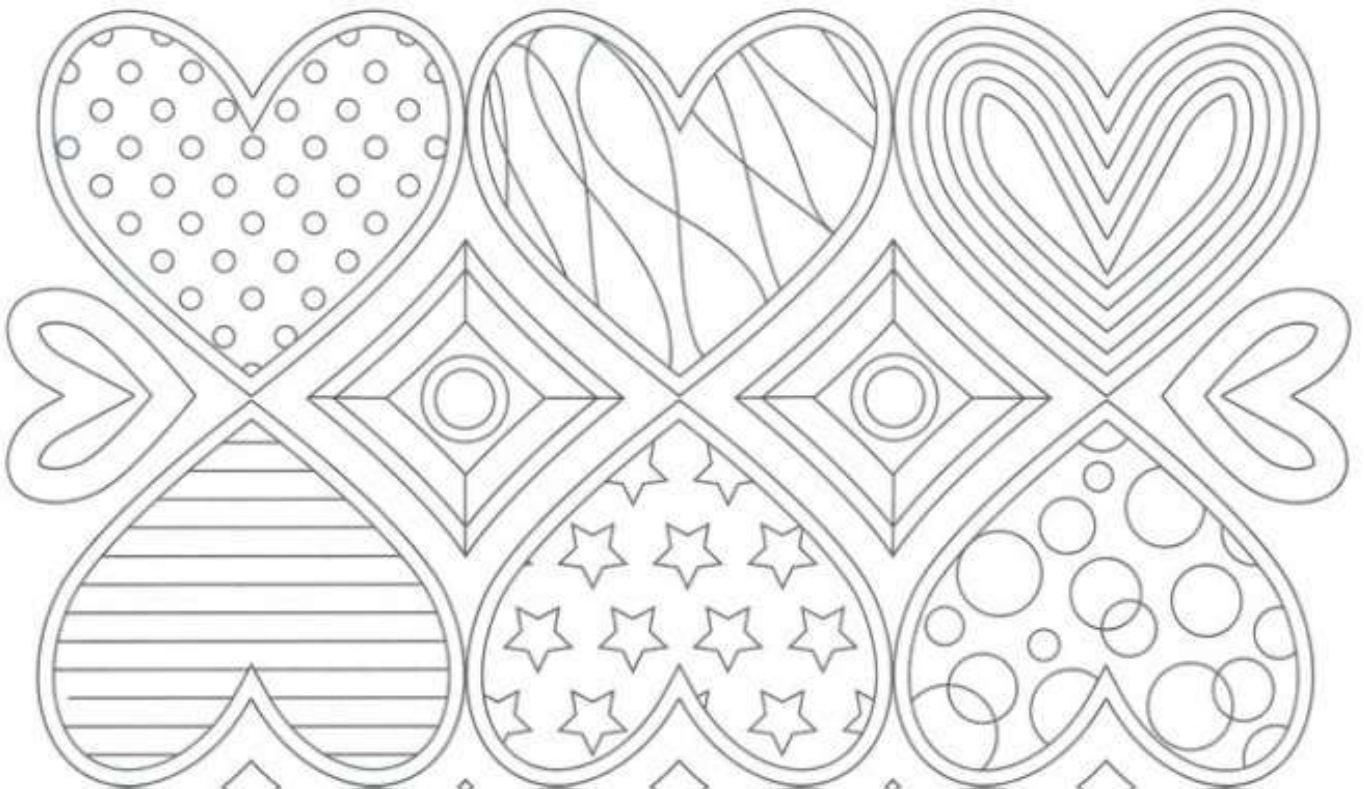
When they were Famous...

For those of you who remember the music of the 60s you might be interested to know that Bill Young, resident of Crouchston (he was known then as Billy Young), was a well known rock and pop singer. Groups he sung for include The Southerners and The Solid Six. He then became a member of The Gary Edwards Combo and made several records which Bill still has today. Gary Edwards is Charlotte Church's grandfather! Bill also sung with his sister Dot who were known as The Tempest Twins.



Alix Ricketts

	8	9			5	1	4	
3			8	1	7			6
7	1		6		4	3	8	
	4	3	9					
9	7						1	4
					8	7	3	
	9	6	4		2		7	1
4			1	5	9			2
	2	1	7			4	9	



Recipe of the Month - Chocolate Fridge Cake

By Lizzie Williams

Ingredients:

250g Digestive Biscuits, crushed in a plastic bag to contain the crumbs.

150g Milk chocolate

150g Dark Chocolate

100g unsalted butter.

150g golden Syrup.

60g Chopped Pecans

100g dried apricots.

75g raisins

Method:

1. Use cling film to line a 20cm shallow, square tin. Allow the cling film to hang over the side.
2. Melt the butter, chocolate and golden syrup in a heatproof bowl over a pan of simmering water, stir occasionally until all melted and combined.
3. Remove from the heat and stir in the biscuits, apricots, raisins and pecans.
4. Spoon into the tin and level down using a potato masher.
5. Leave to cool and put into the fridge for 1-2 hours.
6. Turn out onto a hard surface and peel off the cling film, dust with cocoa powder if desired. Cut the cake into 12 squares.



Sarah's Gardening Tips

1. Remove dead material from ornamental evergreen grasses.
2. Take mint root cuttings to grow on indoors for tasty early leaves
3. Plant new roses making sure they are deep enough, i.e. so that the graft is an inch below the surface.
4. Sow early pea varieties such as "Feltham First" under cover in pots.
5. Plant chilli and tomato seeds, use a sunny windowsill or propagator.
6. Finish cutting back any dead stems from perennials ready for spring.
7. Plant bare-root trees and shrubs while they are still available.
8. Deadhead winter pansies as blooms fade to prolong flowering throughout the spring.

*If a tree dies, plant another in its place.
Carolus Linnaeus*



Question: Which North American shrub (*Symphoricarpos albus*) of the honeysuckle family, bears white berries and is often cultivated as an ornamental or for hedging? (Answer on p 44)

Sarah's Garden Services: 07971 909 548

Email: mygardenservices@outlook.com

Follow us on Facebook and Instagram @sarahsgardeningservices



Take Away Menu

*Available Tuesday – Thursday 6pm -9pm
Friday & Saturday 5.30pm – 9pm*

White Hart Southern Fried Chicken Strips,
Fries & Coleslaw £8.95

Beer Battered Cod & Chips £8.95

Chicken Tikka Curry or Root Vegetable & Lentil
Curry with Rice, Poppadom or Naan £8.95

Roasted Vegetable Lasagne served with Garlic
Bread & Salad £9.50

Tender Hampshire Beef & Guinness Stew
topped with Dumplings served with seasonal
Vegetables
£10.50

Slow Roasted Lamb Shank in a Mint Gravy,
Crushed Potatoes & Braised Red Cabbage
£13.75

Poached Cod fillet in a Red Thai & King Prawn
Sauce with Lemon Rice
£14.50

Seasoned ½ Roast Chicken on the Bone served
with Fries, Coleslaw & Corn on the Cob
£13.95

Fisherman's Pie (Cod, Salmon, Smoked
Haddock, King Prawns & Mussels) topped with
Parmesan Mash served with Carrots &
Broccoli £13.50

6oz Beef Burger - £8.75

7oz Piri Piri Chicken Burger in a Charcoal Bun -
£9.25

Thai Vegan Burger - £8.50

Foot Long Bratwurst topped with Sauté Onion
& Curry Sauce £9.50

(Additional Toppings 50p – Bacon, BBQ Sauce,
Cheddar, Stilton, Brie, Jalapeno & Scorchers
Cheese)

12" Thin Crust Pizza

Margarita

(Tomato Base, Mozzarella, Beef
Tomato & Oregano) £9.95

Seafood

(Pesto Base, Mozzarella,
Prawns, Mussels, Squid,
Anchovies & Black Olives)
£13.95

Italian Meat Feast

Smoked Tomato Base,
Mozzarella, Parma Ham,
Salami, Chorizo & Spicy Beef)
£13.95

Indian

(Spicy Tomato Naan Base,
Mozzarella, Chicken Tikka,
Onion Bhaji, Mango, Peppers &
Coriander) £13.95

Vegetarian

(Tomato Base, Mozzarella,
Caramelised Red Onion, Goats
Cheese, Cherry Tomato & Basil)
£11.95

Indian Vegan

(Tomato Naan Base, Vegan
Cheese, Pepper Dew Peppers,
Red Onion, Tofu, Mango &
Coriander) £11.95

Sunday Roast

Beef £12.25, Lamb £12.95, Chicken £11.95,
Pork £11.95

All served with Seasonal Vegetables, Roast
Potatoes, Yorkshire Pudding & Gravy
Sunday Only 12pm – 2.30pm

The White Hart, Bishopstone

01722 780244



- Family
- Employment
- Property
- Litigation & Disputes
- Commercial
- Wills & Probate

St Mary's Chambers, 51 New Street, Salisbury, Wiltshire SP1 2PH
t: 01722 410664 e: mail@sampsoncoward.co.uk
www.sampsoncoward.co.uk



BECAUSE YOUR FAMILY MATTERS

Your family is the most precious thing. You want to protect your family and make sure your family is looked after when you are no longer around.

We specialise in helping families plan for the future - including supporting them with Wills, Trusts and Lasting Powers of Attorney.

We are offering a **20% discount**
on our standard fees for Wills to those booking with
Hannah Goodeve or Bethan Creasey.
Please quote 'STaB Parish Magazine' when contacting us.



Hannah Goodeve



Bethan Creasey

**PARKER
BULLEN**
SOLICITORS

#HereForYou

01722 412000

www.parkerbullen.com

NEW Garage (Harnham) Ltd

01722 321 330

Salisbury Original Car Care Clinic
Vehicle wide diagnostics, whatever
the problem, we have the solution

- ◆ All Auto electrical work undertaken.
- ◆ Class 3, 4 & 7 MOTs with Class 1 and 2 available on request.
- ◆ Air conditioning services carried out.
- ◆ Lease work undertaken.



NOW OFFERING PAYMENT ASSIST

Pay just 25% of your bill today
Spread the remaining cost over the next 3 months
NO FEE NO INTEREST NO CATCH



www.newgarageharnhamltd.co.uk

RAC
Approved Garage



BASED IN FOVANT

01722 714308
07541 358570

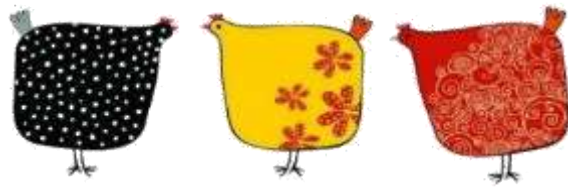
- Local
- BPCA trained
- RSPH qualified
- Sensible pricing
- Fully insured
- Reliable
- Discreet
- Evening & weekends



www.greystonespestcontrol.com

michael@greystonespestcontrol.com

NEWBOURNE FARM



COMPOSTING

A local, family run business based in Rockbourne since 1995, offering green waste disposal and the sale of top quality accredited topsoil and compost.

On site processing of materials produces excellent screened 10mm top soil, landscaping compost for domestic and commercial use and agricultural spec compost.

Local delivery available for bulk bags or loose loads.

For more information about our products please contact

Rod 01725 518673 / 07896 544197 or

Andy 07766 163203

www.newbournecompost.co.uk





SELF STORAGE FACILITY

**SPECIAL DEAL: 50% off for your first 8 weeks **

Safe, secure & convenient

Self-storage units for domestic or business use

All sizes available

On the A354 near Sixpenny Handley

Enquiries to David 07971 869372 or Steph 07748 925810

Or email: info@dorsetandwiltsstorage.co.uk

www.dorsetandwiltsstorage.co.uk



Home baking?

You'd be better come and see us, a great flower flour selection when you yeast expect it, for not a lot of dough. Don't delay, you knead to use your loaf and visit us today!

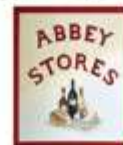
DON'T FORGET:

- Contact-free delivery service
- Free delivery within 5 miles of Coombe Bissett
- Low £20 minimum order for free delivery
- No fighting for delivery slots!
- Collect during opening hours if you prefer
- **Mail orders to**
shop@coombebissettstores.co.uk
OR CALL 01722 718852

Coombe Bissett Stores • Homington Road • Coombe Bissett • SP5 4LR

Shop and Post Office hours
 Monday to Friday 7.00 am – 6.00 pm
 Saturday 7.00 am – 1.00 pm
 Closed Bank Holiday Mondays

01722 718852



TATNER and CO

TRADITIONAL AND MODERN UPHOLSTERY

Our bespoke upholstery services include:

Dining Room Chairs	Roman Blinds	Campervan seating and Rock and Roll beds
Arm Chairs (including Parker Knoll)	Curtains	Classic car seating
Outdoor/garden seating cushions	Scatter cushions	Caravan and motorhome seating
Bench seating (kitchen, bar and restaurant)	Box Cushions	Ottomans and storage boxes
Footstools (including made to measure stools)	Headboards	

Contact Michelle Tatner on :

MOBILE : 07968 842525

Facebook : Tatner and Co

EMAIL: tatnerandco@gmail.com



Instagram: [tatner_and_co](https://www.instagram.com/tatner_and_co)



EBBLESIDE BUILDING LTD

Extensions – Property restoration – Groundworks
Bricklaying – Carpentry – Roofing – Plastering – Tiling
Traditional lime works – listed building works – Kitchens –
Bathrooms

All aspects of building work carried out

Tel: Russell **07463780938**, Campbell **07976438752**

Email: campbell.mcculloch@tiscali.co.uk, russfoss19@aol.com,

Registered in England & Wales No: 11291245

Vat reg no 308159701

Registered office: Ebbleside, Stratford Tony, Salisbury, Wilts, SP5 4AT

BREAD
FLOWERS
AT HOME

FRESHLY COOKED TAKEAWAY DISHES

DESIGNED TO BE A WEEKEND TREAT

Bread & Flowers brings you delicious flavours to relish & inspire.
Dishes are cooked & prepared to order by our team at our HQ,
ready to be collected by you and reheated at home.

OUR FRIDAY MENU FEATURES:

- mezze / starters
- main courses
- side dishes
- puddings
- food for entertaining

enquiries@breadandflowers.co.uk

01722 326581

Bread and Flowers

Longford Farmhouse

Bodenham, Salisbury, SP5 4EL

Order online for collection
on Fridays 2pm-6pm

breadandflowersathome.co.uk

GRAHAM DIMMER MOT CENTRE

MOT Tests on all types of vehicle up to 3,500kg
Servicing & General Repairs on all makes & models
Including **camper vans**
Specialist vehicle diagnostics
Air Conditioning repairs & re-gassing
Electronic Wheel Alignment
Free Courtesy Car

01722 328344

Avon House, Newton Road, Churchfields Salisbury, Wilts SP2 7QA

Email: info@grahamdimmermot.co.uk

www.grahamdimmermot.co.uk

S. WALLWORTH ELECTRICAL SERVICES LTD

FULLY QUALIFIED ELECTRICIAN, EMERGENCY REPAIRS

INSTALLATIONS – RE-WIRES, ELECTRICAL REPAIRS & TESTING

EXTRA SOCKETS & LIGHTING, NIGHT STORAGE HEATING, ELECTRIC SHOWERS

DOMESTIC & COMMERCIAL



FREE QUOTATIONS.

SIMON WALLWORTH

31 DEAN LANE, SIXPENNY HANDLEY

SALISBURY, WILTSHIRE

SP5 5PA

TEL: 01725 552545 MOB: 07826 928759

S.WALLWORTH@HOTMAIL.CO.UK

Sarah's Garden Services

Need help with your garden?



**Weeding, Planting, Mowing, Pond/Greenhouse Cleaning,
Holiday Watering etc**

No job too small!

07971 909 548

mygardenservices@outlook.com

Bishopstone based.

Wessex Contract Services

*Fencing, Landscaping,
Ground Care & Maintenance*

Lee Curtis

Tel: 01722780842

Mob: 07875018317

Email: lee@wessexcontractservices.co.uk



SP Restoration

Antique Restorers

We offer our customers a specialist service in

Antique restoration, French polishing, Veneering, Complete table re-polishing, Wood turning and Desk leather inserts.

We have a fast chair repair service, we offer a collection and delivery service with free estimates. You're welcome to come visit us at our workshop:

Unit 1 St Martin's Workshops
Manor Farm
Fifield Bavant
Broadchalke, SP5 5HT
01722 780584



For all your pest issues, Local, fully insured, fully qualified BPCA Member
Wasps, Rats, Mice, Cluster fly, Clothes Moth, Fleas, Squirrels, Bed bugs
Call now- **07711 259749** Email- **info@wiltshirepestservices.co.uk**

METAL ARTWORK

BLACKSMITHS & GENERAL ENGINEERS

01722 781212

www.metal-artwork.co.uk



Pregnant?

Looking for evidenced-based childbirth education?
Considering having an extra birth partner?


A doula can...

- Stay with you throughout labour and birth to help you achieve your specific choices
- Offer 1:1 breastfeeding and general feeding support
- Provide help at home for those first few days and weeks after birth

Doula Cally Edwards offers emotional and physical support to help you truly enjoy your pregnancy, birth and early days with your new baby



www.callyedwards.com

   @doulacally



THATCHING BY BRAD YOUNG

WWW.MASTER-THATCHER.COM

CRAFTSMAN IN WHEAT STRAW & WATER REED

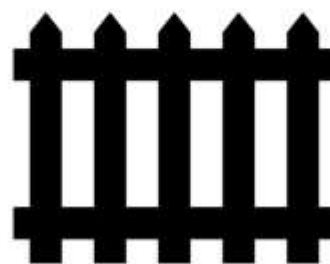
MERRILEAS, NORTH ST
BROADCHALKE, SP5 5EN

07717887743

BRAD@MASTER-THATCHER.COM



Ebble Fencing



- Bespoke Fences and Gates
- Professional Service
- 20+ Years Experience
- Fully Insured
- Free Quotations

07789 707959

www.ebblefencing.com

Robin Higdon

Your local garage

Car repair, maintenance and pre-MOT preparation for all makes of car.

The Unit, Crouchston Farm, Bishopstone.
Phone: 01722 780606

Jennie Gilbert - Pottery



I make Stoneware pots for the home. Perfect presents for you or your friends. You're very welcome to come and visit the workshop. I also run 2 day pottery courses, please call or email for details.

4 St. Martin's Workshops
Manor Farm
Fifield Bavant
Broad Chalke
Salisbury
SP5 5HT

01722 780402
www.jenniegilbert.com
jennie.gilbert@yahoo.co.uk

Matthew Veale

Mobile Hairdresser Available 6 days per week

Reliable friendly service London Toni & Guy trained

Please call 01722 336821 or 07788 686829



**SAUL
MITCHELL**
INTERIOR DESIGN

Tel:01747820682

Mob: 07787927455

www.saulmitchell.co.uk

admin@saulmitchell.co.uk

evolve

TREE SERVICES

call Stuart Larter for a free quote

07563 645043
01747 871753



Tree Specialist,
Fully Qualified and Insured

www.evolveetree.co.uk

FISH & CHIP VAN

EVERY THURSDAY

BROADCHALKE

CHALKE VALLEY SPORTS CENTRE
KNIGHTON RD FROM 4.30PM - 6PM

&

DINTON

ON THE CORNER OF HINDON RD
& SNOW HILL FROM 6.45PM - 8PM

FOOD ORDERS CAN BE PLACED

- ★ **PHONE/TEXT ON 07714438356**
- ★ **ONLINE VIA OUR WEBSITE OR FACEBOOK**
- ★ **IN PERSON AT THE VAN**

FOR MORE INFORMATION & FULL MENU PLEASE
VISIT WWW.FRYINGTUCK.CO.UK

PA CARE DIRECTORY

CARE AND HOME HELP

The PA care directory have spaces for new clients a free to use service matching a carer to your needs.

CALL US TODAY ON 07557417563 FOR YOUR OWN PERSONALISED TAILORED HELP IN YOUR OWN HOME.

EMAIL HSPRAGG83@YAHOO.COM
OR CALL FOR HELP.



Picture Framing

We will frame: Photographs
Paintings, Prints, 3D objects e.g.
Sports Shirts, Memorabilia and
much more..

Call to visit our Coombe Bissett workshop:

01722 718695 or 07747 017221

Email: info@spireframing.co.uk
www.spireframing.co.uk

Be Inspired!

LITTLE BANKSIDE

www.littlebankside.co.uk

Do you need extra space for visiting family & friends?
Self contained studio holiday let for 2 in Bishopstone.

Contact:
Hilary King
littlebankside@gmail.com
01722 780017

Comfortable and cosy self-contained accommodation.

Little Bridge Studio

Bishopstone

Sleeps 3 plus cot.

Large open planned living space with wood burning stove.
Shower room and separate bathroom.

Contact: Alice Lyons - 01722 781137 or 07811455756



MADDY'S MENDING

*ALL ALTERATIONS AND MENDING, FROM
BUTTONS TO BLINDS, CURTAINS TO CUSHIONS*

No Job Too Small!!!

CALL MADDY ON: 01725 519504 OR
0777 4207 423

FREE COLLECTION AND DELIVERY

Pod & Pip

Workshop Open

Wednesdays 10-2pm

Thursdays and Fridays 10-4pm

Saturday 930-1230

Fresh Flowers, Plants, Cards, Candles & Gifts

Pre-ordered bouquets for local
delivery/collection

Flower Workshops, Wedding & Funeral
Flowers

Ebble House, Stratford Tony 07766775869

www.podandpip.co.uk

Kevin Knight Clock & Watch Repairs

Free estimates given

Over 30 years experience

Tel 01722 331969

Mob 07900 928451

Email:

kevindavidknight@gmail.com

HIGH SPEC WINDOW CLEANING

Other Cleaning Services Include:

- Gutters
- Fascias
- Driveways
- Patios
- Conservatories
- Walls
- Greenhouses
- Cladding
- Solar Panels
- Paths

T: 01425 650894

M: 07879 426914

www.hs-cleaning.co.uk

Tim Saunders Plumbing & Tiling Services

Complete Kitchens, Bathrooms & Wet rooms
Tanks, Cylinders, Pumps, Valves & Radiators
Taps, Basins, & Toilets

Unvented hot water system installation, repair
& servicing (G3 certificated)

Stuart Turner approved installer

Disabled/assisted living zero vat
installations/conversions

Wall & floor tiling

Free advice and estimates

Emergency repairs. No call out fees

Fully insured

07772 610190

Email: timsaundersps@gmail.com



GRAY'S **BESPOKE**
STONE **MEMORIALS**
CARVING &
STUDIO **INSCRIPTIONS**

Creating memorials of
celebration and commemoration

for more information visit:

www.grays-stone-carving.co.uk

or call tel: 07766464048

Unit 2 Knowle Farm, Bowerchalke, SP5 5BP

CHALKE VALLEY BEEF
BOXES



LOCAL FREE RANGE DEXTER BEEF, GRASS FED IN THE
BEAUTIFUL CHALKE VALLEY, USUALLY SOLD IN 10KG
BOXES (INCLUDES A SELECTION OF JOINTS, MINCE,
STEWING STEAK AND STEAKS). VACUUM PACKED FOR
YOUR CONVENIENCE.

DON'T MISS OUT! PHONE NOW FOR PRICES AND TO ORDER.
ROBERT HUXLEY: 07493 721317 OR TED COOMBS:
07970965040 OR EMAIL RHUXLEY1972@GMAIL.COM

**Charlotte Steel, VTCT, IHHHT
Complementary Therapist**

The Chapel, Bowerchalke, 01722 780107 mob: 07811 944328

Email: cjsteel92@gmail.com

Hot Stone Massage: Full body (90 mins) £60

Back, neck & shoulders (1hr) £47

Aromatherapy Massage: Full body (90 mins) £53

Back, neck & shoulders (1hr) £40

Reflexology: Initial consultation (1hr) £33

Further treatments (50 min) £30

Plus 30 minute face/head massage £47.50

Facial: Including, back, arm & head massage (75 mins) £57.50

For a further £14 massage appointments can be extended by 30 minutes to include extra work
on problem areas or a relaxing head & face massage

Gift Vouchers Available

Request from the Editorial Team:

*If you use any of the services advertised here in STaB please do let them know that you
found them/their details here in the magazine. This helps them to know that their
advertising is working, and helps us to continue to receive revenue from advertising fees.*

And in this difficult time, please do try to support small businesses.

*Also, if you know of any local businesses that might be interested in advertising with us,
please do pass on our details to them. Many thanks!*

Advertising Rates

STaB - The Parish Magazine for the villages of Stratford Tony and Bishopstone

2020 Advertising rates – based on A5 page

STaB is delivered to around 300 houses in the parish, so your advert will reach many homes in the Chalke Valley. STaB is also published on the Bishopstone Village website: www.bishopstone-salisbury.co.uk

Price per year: 10 editions (Aug/Sept & Dec/Jan are joint editions)

Occasional adverts can be paid for at a pro-rata rate (1/10th of the annual rate per issue)

<p>Full page</p> <p>13x19cm</p> <p>£110 per annum</p>	<p>Half page</p> <p>13x9.5cm</p> <p>£60 per annum</p>	<p>Quarter page</p> <p>Portrait 6.5x9.5cm</p> <p>£30 per annum</p>	<p>Quarter page</p> <p>Landscape 13x5cm</p> <p>£30 per annum</p>
---	---	--	--

How to place your ad in STaB

1. Make a .pdf, .jpeg, or Word file of your ad, making sure it is the correct dimensions for publication (see table of sizes and prices above) and that it will reproduce well in black and white.
2. E-mail the file to Sarah Brough (ads.stab@gmail.com), stating what size of ad you would like, and how long you would like it to run for.
3. The deadline for publication is 5pm on the 20th of each month. Please send ads as early as possible.
4. When you have placed your order, you will receive an invoice with details of payment by cheque or bank transfer. Please pay within 14 days. Donations always welcome.
5. The Editor reserves the right to edit all contributions.

BISHOPSTONE PARISH COUNCIL

Councillors	Telephone
John Gibbon (Chairman)	01722 718551
Ali Thorne (Vice Chairman)	07768514133
Norman Barter	01722 780471
George Brutton	01722 718539
Anita Smith	01722 781213
Piers Edwards	01722 780079
Michelle Tatner	07968 842525
Parish Clerk	
Mike Ash Lower Thatch Flamstone Street Bishopstone SP5 4BZ	01722 781044 bishopstoneclerk@btinternet.com
Further information is on the village website: www.bishopstone-salisbury.co.uk	

THE VILLAGE HALL COMMITTEE MEMBERS

Chairman - Norman Barter	780471
Treasurer - Francis Taylor	780316
Entertainments - Sue Taylor	780316
Event bookings - Caroline Ash	781044
Hall bookings - Margaret Barter	780471
Hall maintenance - Nigel Peasley	780713
Minute secretary - Virginia Middleton-Smith	780444
Member - Pat Abbott	780002

The Village Hall is an important resource and offers a venue for a wide variety of events for the benefit of all. The Hall is supported by a large group of dedicated local people in addition to the Committee. We hope you will support events whenever you can and if you would like to join the wider group of Friends of the Village Hall then please contact any member of the committee.

Bishopstone Village Website

www.bishopstone-salisbury.co.uk

The village website carries a wealth of information about Bishopstone. There are pages devoted to the church, the Parish Council, what's on at the Village Hall, meetings, clubs, local organisations and village walks. There are even digital copies of this magazine.

If you want to have any information included on the website please contact either

Mike Ash (bishopstoneclerk@btinternet.com)

Or Roger Stockton (rogerstockton@icloud.com)

Bishopstone Area Covid Co-ordinators

Name	Part of village	Telephone Numbers
Jane Peasley	Croucheston	07746 573391
Jane Stocker		07761 805469
Dani Humphrey	Flamstone Street	07811 117453 01722 781056
Sarah Brough	Netton Street and Netton Island	07825 442110 01722 780684
Cally and Piers Edwards	Butt Lane, Netton Close and Stanley Close	01722 780079 07968 797168
Kate Pendlenton	The Croft and Harvest Lane	07769 202200 01722 780655
Sarah Brough	The Styles	07825 442110 01722 780684
Michelle Tatner	Pitts Lane and High Road	07968 842525
Jan Goodfellow	Whitlock Rise and Meadow View	07919 376814 01722 718045
Sarah Blank	Faulston	01722 780664
Nicky Rigg	Manor Farm and Throope	07786 806914
Olivia Wilson	Blandford Road	07773 844825
Please contact your Co-ordinator if you need help with shopping etc, or to arrange for prescriptions to be collected from Sixpenny Handley. If you are unable to reach the Co-ordinator for your part of the village, and the matter is urgent, please phone one of the others who will try to help.		

Staying in Touch

STaB magazine is a vital source of communication in the village, keeping everyone informed as to what is happening locally. However, the Covid-19 pandemic has highlighted the fact that the situation can change very rapidly. To keep up to date with what is going on there are two other important sources of information in Bishopstone - the village website and our own WhatsApp network.

The village website – www.bishopstone-salisbury.co.uk is updated in real time and carries all the latest news on issues that affect the village.

The Bishopstone Network is a WhatsApp messaging service that has more than proved its worth during the pandemic. Information can be instantly shared to your mobile phone about support services being provided in the village and on a variety of other matters – everything from the length of electricity black outs to what is available from the White Hart take-away service! You will need to download the App to your phone and then contact Piers Edwards (piersgedwards@gmail.com or 01722 780079) or Kate Pendlenton (kmpendlenton@hotmail.com or 07769202200) and ask to be added to the group.

Letters to the Editor

Letters to STaB are very welcome, but the views expressed may not be those of the editorial team or the Parish Church Council.

Huge thanks to those in the village who joined in with decorating their festive windows during December. We really enjoyed looking at them - and also some of the lovely festive garden features that popped up, baubles adorning trees, etc.

It was obviously a bit of miserable time for so many of us, I do hope that this brought just a little cheer to people.

I am sorry that I didn't take my camera out to get more photos, I simply didn't think about it until it was too late, but here are a few shots of the decorations in our windows (made by me, with help from my 8 and 3 year old sons), and Helen Clarke's decorations in Pitts Lane.

Kate Pendleton



STaB Selling Spot



Bunk Beds - can also be used as twin beds (as pictured). Drawer underneath for storage, and ladder also included!

No payment expected, but very happy for you to make a donation to STaB.

Buyer collects.

Please contact Sarah Panes on 780255.



Services in Chalke Valley Benefice - February 2021

BCP = Book of Common Prayer (Traditional Language), CW = Common Worship (Contemporary Language)



Pattern of services during Lockdown restrictions.

Please follow all the safety rules in church. If the Covid 19 situation changes, services may be cancelled at short notice. Churches will normally be open for private prayer. Please check your church noticeboard and weekly e-bulletin.

7 February 2nd Sunday before Lent	9.30am 9.30am 11.00am 11.00am	Parish Communion (CW) Parish Communion (CW) Family Communion (CW) Family Communion (CW)	Broad Chalke Britford Ebbesbourne Wake Coombe Bissett	Catherine Blundell Jenny Taylor Catherine Blundell Jenny Taylor
14 February Sunday next before Lent	9.30am 11.00am 11.00am 3.00pm	Parish Communion (CW) Parish Communion (CW) All Age Service Evening Prayer (BCP)	Bowerchalke Homington Alvediston Fifield Bavant	Roger Leake Jenny Taylor Biddy Trahair Biddy Trahair
17 February ASH WEDNESDAY	12.15pm 7.00pm	Communion with Ashing (CW) Communion with Ashing (CW)	Broadchalke Coombe Bissett	Catherine Blundell Jenny Taylor
21 February 1st Sunday of Lent	8.00am 9.30am 11.00am 11.00am 11.00am	Holy Communion (BCP) Parish Communion (CW) Parish Communion (CW) Morning Prayer (BCP) Parish Communion (CW)	Bowerchalke Bishopstone Berwick St John Ebbesbourne Wake Homington	Roger Leake Jenny Taylor Roger Leake Biddy Trahair Jenny Taylor
28 February 2nd Sunday of Lent	9.00am 9.30am 11.00am 11.00am 6.00pm	Holy Communion (BCP) Family Communion (CW) Parish Communion (CW) Holy Communion (BCP) Evening Prayer	Berwick St John Broad Chalke Bishopstone Alvediston Bowerchalke	Roger Leake Catherine Blundell Jenny Taylor Roger Leake Lay Led
7 March 3rd Sunday of Lent	9.30am 9.30am 11.00am 11.00am	Parish Communion (CW) Parish Communion (CW) Family Communion (CW) Family Communion (CW)	Broad Chalke Britford Ebbesbourne Wake Coombe Bissett	Catherine Blundell Jenny Taylor Catherine Blundell Jenny Taylor

Ministry Team: Team Rector - The Revd Catherine Blundell: 01722 780134
 Team Vicars - The Revd Canon Jenny Taylor: 01722 503081, The Revd Dr Anna-Claar Thomasson-Rosingh: 01722 238267
 Curate - The Revd Roger Leake: 07947149456 Licensed Lay Minister - Mr David Blundell: 01722 780134
 Team Administrator - Mrs Emily Broomhead: 07890 262376
 URC Ministers - The Revds Ana & Tod Gobledale 01722 330980, The Revd Jackie Lowe: 01722 780008

Assisting Ministers: The Revd Canon Ann Philp: 01722 555178, The Revd Kate Rosslyn Smith: 01722 780011

Lay Worship Leaders: Yvonne & Kevin Follett: 01747 828785, Caroline Lamb: 01722 780789, Sally Leaver: 01722 780447,
 Naomi Martin: 07713031774, Don Morgan: 01722 718557, Richard Morgan: 01722 338868, Adrian Taylor: 01722 325862, Gill Riley: 01722 780538,
 Janet Roe: 01725 519242, Biddy Trahair: 01722 780666, Rhoderick Voreberg: 07785 304142, James Wardroper: 01722 718152



Some of the Parish's newest residents! Thanks to Alix Ricketts for the photos.

If there are any problems with the delivery of STaB please contact Sue Porter on porter1totalserve@gmail.com or 01722 780459.