



Parish Magazine

March 2020



Peacock Butterfly on Blackthorn Blossom

Photo by Kate Pendleton

STaB is published by the Parochial Church Council and delivered free of charge to every home in Stratford Tony and Bishopstone. We hope you find it interesting and informative. Donations towards publication costs are always welcome. Donations should be made payable to Bishopstone Parochial Church Council and sent to:
The Treasurer, Bishopstone PCC, Ebble Cottage, Mill Lane, Bishopstone,
SP5 4BG. Please state on a cover note that it is for STaB.

The views in this magazine are not necessarily those of the PCC.

Editorial Team

Kate & Robert Pendleton: 01722 780655

Cally Edwards: 01722 780079

Lizzie Williams: 01722 780905

Email: **teamstab2019@gmail.com**

Advertising

Rachael Dew: 01722 780871

E.mail: **ads.stab@gmail.com**

Any articles for inclusion are to be submitted by 5pm on the 20th of the month to appear in the next issue - *unless the magazine is already full.*

The editors reserve the right to edit all contributions.

Family Service for Lent

Sunday 1st March

11.00 am in St John the Baptist Church
Bishopstone

Come and sing and pray and do and eat!

Look forward to seeing you there!



A warm welcome to...

Please let us know if you know of anyone who moves into Bishopstone or Stratford Tony so that we can offer them a welcome in STaB.



Hello from the Revd Canon Jenny Taylor



March brings Lent and all that that season entails! If you are taking something up or letting something go over these next six weeks may it go well for you!

Children are very much our focus in the Valley Churches this Lent as you will see from our Lent leaflet (and thank you to everyone who has delivered this as well as this edition of STaB this month!). In my work as a School Chaplain for over fifteen years I was always been very aware of the vital role schools play in the whole development of the child with spirituality being a key element of that development. It encompasses how each child sees his or herself in relation to the world, to other children and adults and just as importantly it involves those senses of awe and wonder which children naturally have. So I am very excited that all our fundraising this Lent will go into this project of nurturing the spirituality of the children in our three Valley Schools.

Please support all our events especially the Bishopstone Coffee Morning on Saturday 7th March – it will be lovely to see you there. And remember, every single pound you give will give a child in our Valley a helping hand to grow into a confident, happy, young person whose sense of “other” has been nurtured by you!

A HUGE thank you in advance for your generosity from all the children in our Valley Schools!

Chalke Valley Team Ministry - Parish of Bishopstone and Stratford Tony

Team Rector: The Revd Catherine Blundell 01722 780134

Team Vicar responsible for Bishopstone and Stratford Tony:

The Revd Canon Jenny Taylor 01722 503081

Church Wardens: George Brutton 01722 718539 Sarah Seal 01722 780305

Lay Pastoral Assistants: Sally Leaver 01722 780447 Sheila Nell 01722 781120

Team Administrator: Emily Broomhead 07890 262376

thechalkevalleychurches@gmail.com

The Friends of Bishopstone Church

If you would like to help the Friends of Bishopstone Church with their work of preserving the fabric of this beautiful building, please contact the Treasurer Norman Barter (01722 780471).

BISHOPSTONE ANNUAL PARISH MEETING AND PARISH COUNCIL MEETING

The **Annual Parish Meeting** will take place at **7.00pm on Thursday 12th March 2020** in the Village Hall. This is the annual opportunity for residents to raise, for general discussion, any issue affecting the village and to hear reports from various village organisations about their activities during the past year.

In February's edition of STaB it was indicated that the agenda for the Annual Parish Meeting might include a discussion of new development proposals for Crouchston Mill. Unfortunately this will not now take place.

The Annual Parish Meeting will be followed by a meeting of the **Parish Council**. **The agenda for that meeting will be available on village notice boards and on the village website (www.bishopstone-salisbury.co.uk) one week before the meeting.**

All are invited to attend. Coffee, tea and biscuits will be available from 6.45pm.



The PCC are planning on having an 'Open Gardens' event next year on 12th July. If you feel that you could have the general public viewing your garden, and would like to take part, please ring Sally Leaver on 780447 or e.mail davidsallyleaver22@btinternet.com

Hoping to hear from you!

Sally



The Great British Spring Clean takes place between 20 March and 13 April 2020. If a Litter Pick is to take place in the village sometime between these dates *someone needs to come forward to organise it.* Volunteers to undertake the pick are also required. If you are prepared to organise or take part please contact Mike Ash on 781044 or email bishopstoneclerk@btinternet.com.

Did you know that the Valley has its own Facebook page?



If you are on FB do join **Chalke Valley Families.**

The Anglo-Saxons called the month of March 'Hlyd monath' which means Stormy month, or 'Hraed monath' which means Rugged month. After Storms Ciara and Dennis let's hope there are no more to come in March this year!

Village Hall



March 2020

SUNDAY 5th APRIL at 3pm

“The Bird Show” by The Last Baguette Theatre Company.

A flap-tastic fact-filled family comedy. With frolics and foraging, flitting, flying and two unusual feathery friends, this is a madcap and touching show about birds facing changes to their habitat. Suitable for children of 4 years and upwards, this show is supported by Rural Arts.

Tickets: Adults £10, concessions £8, children £5 and family ticket £25 (2+2) available from 01722 781044 or online at <bvhticketoffice@btinternet.com>

MOVIOLA at Bishopstone

Friday March 27th ‘Official Secrets’

The true story of a British whistle-blower who leaked information to the press about an illegal NSA spy operation designed to push the UN Security Council into sanctioning the 2003 invasion of Iraq. Directed by Gavin Hood it stars Keira Knightly, Matt Smith and Matthew Goode.

Friday April 24th ‘Judy’

Advance booking for Moviola is strongly recommended. Tickets which cost £6 each are available from <bvhticketoffice@btinternet.com> or from 01722 781044 or 780002.

Cash bar, snacks and ices available. Doors open 7pm.

BISHOPSTONE COMMUNITY CAFE

These are normally held on alternate Thursdays.

The next coffee mornings will be on Thursday 12th and 26th of March and then on the 9th April from 10.30am until 12.00noon.

Everyone welcome to look in for a coffee and chat for just 50p.

BISHOPSTONE COMMUNITY LUNCHES WITH SPEAKER

Monthly from October until April.

A home-cooked lunch is served around 12.30pm.

To book, please phone 781044 or 780002, letting us know if you have any specific dietary requirements or need transport.

Lunches cost £7.50 including a glass of wine or soft drink.

Wednesday 4th March

Speaker: Sue Waldron on "Travels on a Narrowboat on the Kennet and Avon Canal", Wednesday 1st April

Speaker: Francis Taylor will give an illustrated talk about "Easter Island"

BABY AND TODDLER PLAYGROUP

The playgroup meets on Friday mornings during term-time from 9.30 – 11.00am, and breastfeeding support is available at the group (with Cally Edwards). Find our Facebook page *Bishopstone Playgroup*, or contact Kate Pendleton on 01722 780655 or email < kmpendleton@hotmail.com > for more details.

“EXTEND” EXERCISE CLASSES Friday afternoons, 2-3pm

These seated exercise classes are aimed at people who would like a full body workout but prefer to feel stable. £5 per session, (apart from anyone’s first free taster class).

Contact Jenny on 01722 780863, email < jennyberwynjones@yahoo.co.uk > or just turn up to any class to try it out. Jenny Berwyn-Jones is fully trained and insured.

BISHOPSTONE NEEDLES AND PINS CRAFT GROUP

The Needles and Pins Craft Group will meet on **Thursday 5th and 19th March and then on 2nd April, 2 – 4pm.**

Bring any knitting, embroidery, quilting, tapestry or other hobby needlework, and enjoy a cup of tea and cake in Bishopstone Village Hall, only £2.50. New members are always welcome

Call Caroline Ash on 781044 for information.

PILATES AT BISHOPSTONE

Contact Claudine on 07788 587937.

YOGA WITH HANNAH

Yoga classes with Hannah Stocker in the Village Hall.

Dates for March are: **Tuesday 3rd (7-8pm), Thursday 5th (7-8pm), Tuesday 10th (6.15–7.15pm & 7.30–8.30pm) Thursday 19th (6.15–7.15pm & 7.30–8.30pm), Tuesday 24th (7-8pm), Thursday 26th (7-8pm) and Tuesday 31st (6.15–7.15pm & 7.30–8.30pm),**

Sessions cost £7.50 per session.

For further information please contact Hannah Stocker on 0773 856 1888 or by email: yoga_with_hannah@outlook.com

FUTURE DATES FOR YOUR DIARY

SATURDAY 16th MAY - PLANT SALE

The famous annual plant sale will be in the Village Hall on Saturday 16th May.

BISHOPSTONE LADIES GROUP

The meeting on Wednesday, 18th March will be at The Bridges, the home of Di Wass, when Sue Waldron will speak about Canal Boat Crafts.

For details about the group please contact Shirley Cooke on 780436.

BISHOPSTONE VILLAGE HALL
MAGIC LANTERN SOCIETY



Friday 6th March

Zululand, South Africa, 1879. The British are fighting the Zulus and one of their columns has just been wiped out at Isandlwana. The Zulus next fix their sights on the small British outpost at Rorke's Drift. At the outpost are one hundred fifty British troops under the command of Lieutenants Bromhead (Michael Caine) and Chard (Stanley Baker). In the next few days, these one hundred and fifty men will fight four thousand Zulus in one of the most courageous battles in history.



Friday 3rd April

Two FBI agents, investigating the murder of civil rights workers during the 1960s, seek to breach the conspiracy of silence in a small Southern town where segregation divides black and white. The younger agent, Alan Ward (Willem Dafoe), who trained in FBI school, runs up against the small town ways of his former Sheriff partner, Rupert Anderson (Gene Hackman).

Doors open: 7. 00pm. Film starts: 7.30pm
 Phone 780346 or 781044 for membership.

Bishopstone Rugby Enthusiasts



We are running the televising of the 6 Nations ENGLAND rugby in the Village Hall again this year.

We really would appreciate you turning up before kick off so you have sufficient time to buy food and drink **before** the game starts. We will be shutting the bar for the anthems this season.

So the schedule of matches is as below. Beer, Cider, Stout (Ireland game only) and Lager plus soft drinks, sausage or bacon butties plus optional onions will be on the menu as usual.

PLEASE LET US KNOW IF YOU ARE ATTENDING AS THIS ASSISTS WITH CATERING QUANTITIES

MATCH SCHEDULE

Sat 7 Mar	ko 1645	England v Wales
Sat 14 Mar	ko 1645	Italy v England

You are invited to attend a Coffee Morning in aid of
Parkinson's UK (Salisbury Branch) on

Saturday 28th March

10:30-12

in **Bishopstone Village Hall**

PARKINSON'S^{UK}
CHANGE ATTITUDES.
FIND A CURE.
JOIN US.

Come and browse the stalls, and take part in the raffle.

Please support this worthwhile charity!

More details from Sheila Nell (01722) 781120

An old proverb says that "March comes in a like a lion and goes out like a lamb", which means that winter is ending and spring is beginning.

Village Hall Volunteers Needed!



The Trustees and volunteer helpers of our lovely village hall would be very grateful if some younger members of the community could come forward to join the existing committee. This would enable us to know better what people are interested in, and hold some events and activities more relevant to villagers with young families.

The general management of the hall is not difficult, and would be even easier with more volunteers, younger or more experienced. Being on the committee is not a life-sentence, contrary to general opinion. People on the committee can choose to leave, or be re-elected annually, and frequently there is very little to do, except keep an eye on things. We do organise events and mind the lettings and accounts. There are meetings every 2-3 months, dates and times of which are agreed by all, and obviously not everyone can always attend.

As the current office holders would prefer NOT to die in the job, and do want to keep the hall running successfully, we really do need a bunch of new enthusiastic people to replace us in due course. Have a chat with any member of the committee if you are interested, or want to know more about it.

Details of contact numbers etc are at the back of your copy of STaB.

ST JOHN THE BAPTIST - CHURCH ELECTORAL ROLL



Our Church Electoral Roll will be revised between 1st and 25th March in time for our Annual Parochial Church Meeting on 19th April.

If you wish to be included on the Roll, please contact our Electoral Roll Officer, Anne Stutchbury on 01722 780339

Sunset Café Stompers - A Sell-Out Success

February got off to a stomping good start with the performance of the seven swinging musicians plus well known jazz singer Hamish Maxwell. We sold 100 tickets, had a waiting list, and people were still phoning up on the day of performance.

The band played a selection of well-known jazz favourites and also some less well-known, all historically introduced in a factual but droll manner.

Hamish Maxwell was a star and was applauded to the roof every time he got to his feet and sang with the voice of a man half his age.

It was unanimously agreed to have been one of the best acts to have come to the village hall, and one to be repeated in the future.





The Bird Show

A FLAP-TASTIC FAMILY COMEDY
BY THE LAST BAGUETTE

"FUNNY, CHARMING AND THOUGHT-PROVOKING"

★★★★
CREATIVEREVIEW.SUK



Rural Arts!

Sunday 5 April, 3pm

Bishopstone Village Hall, Salisbury SP5 4AA

£10 adults, £8 concessions, £5 children

Tickets: 01722 781044, bvhticketoffice@btinternet.com or
poundarts.org.uk

Pound



ARTS COUNCIL
ENGLAND

Corsham
TOWN COUNCIL

THELASTBAGUETTE.COM

With frolics and foraging, flitting, flying and two unusual feathery friends, this is a madcap and touching show about birds facing changes to their habitat. The Bird Show uses live music, puppetry and lots of silly bird jokes in this heart-fluttering physical comedy.

We follow Henry the Heron and Sally the House Sparrow on a zany journey to become friends while facing ecological threats to their habitat. This colourful, visual show gently explores the impact of humans on nature and asks the question - what can we do differently?

Written by award-winning playwright T.A. Woodsmith, directed by Susana Alcantud, with upcycled set and costumes by designer Bronia Housman and original music by Catherine Burke. Artwork by The Wooden Spoon Press

Suitable for the whole brood including fledglings from 3+





Chalke Valley
Church

choice 

Developing Children's Spirituality

Coffee Morning

Coffee, Tea & Cake ~ Raffle ~ Accessories Stall

In aid of the **choice**  Lent Project

Bishopstone Village Hall

Saturday 7th March

10.45am – 12.15pm

Entry £2.50



If you need to contact us please email thechalkevalleychurches@gmail.com
or call Emily Broomhead (Team Administrator) 07890 262376
www.chalkevalleychurches.org

BISHOPSTONE CONSERVATIVE BRANCH

**OP BANNER
THE TROUBLES IN NORTHERN IRELAND 1969 - 2007
A PERSONAL VIEWPOINT BY ROGER STOCKTON**

**BISHOPSTONE VILLAGE HALL
17 MARCH 2020
7.00PM FOR 7.30PM**



Op BANNER, the British Army's counter terrorism operation in Northern Ireland, lasted for 38 years. This has been the longest single campaign that the British Army has ever been involved in and it took place in part of the United Kingdom.

How it started and what the British Army actually did during this campaign is often unknown or misunderstood. Roger Stockton spent 5 years on operational service in Northern Ireland and will offer personal views on how the campaign developed, how it was played out and the political ramifications that still affect our politics today.

**TICKETS £10 each - PRICE INCLUDES DRINKS AND SNACKS
CONTACT FOR TICKETS - Norman or Margaret Barter (01722 780471)**

Bishopstone Village Hall rates for private hire

Bishopstone Village Hall has 2 rooms that are available for hire for a wide range of functions. The larger room is ideal for children's parties with lots of space for running around. It can also accommodate wedding receptions, charity functions and large family celebrations.

The smaller room (The Memorial Room) is a good size for meetings and smaller gatherings.

The modern kitchen is spacious and fully equipped with an electric catering range, a professional 4 minute dishwasher, water boiler, hot cupboard, microwave oven, 2 fridges and a freezer, all suitable for professional caterers. There is also glassware, crockery and cutlery for over 80 people.

The hire charges include use of heating and electricity.

The rates are currently (January 2019):

	Villagers	Non Villagers
Hire of both rooms (With full use of the kitchen)	£15 per hour	£20 per hour
Hire of both rooms (With tea making facilities but no other electrical kitchen equipment)	£10 per hour	£15 per hour
Full use of the kitchen <u>only</u>	£10 per hour	£15 per hour
Weddings – per event/day	£150	£250
Parties – per event/day	£100	£150

Broadband.

An additional charge is made for use of the broadband connection of £6 per hour with a maximum of £25 per day.

Large projection screen

Use of this professional quality screen is charged at an additional £10 per event.

The hire period must include time to set up and clear away after the event.

For further information and bookings contact: Margaret Barter 01722 780471

Chalke Valley Community Support



The Chalke Valley Link Scheme exists to provide transport and other good neighbour support in a local, personal and friendly way to members of the Chalke Valley community who need it.

If you live between Bishopstone and Bodenham or Britford and need help getting to your surgery/hospital appointments, local shopping, or to visit family members in hospital, please phone **01722 718780** to reach our Joint Transport Coordinators (Anna Mynott, Debby Underhill or Roger Brown who will be on duty in rotation).

There is no charge but you are invited to make a donation towards our administrative costs. Our co-ordinators are all volunteers and there may be occasions when you will be asked to leave a message which will be answered as soon as possible. Our drivers are volunteers too, so please give as much notice as possible so that we can find a volunteer who is available.

Registered Charity No 1076335

Queen's Award for Voluntary Service

POLICE

Call 999 in an emergency: an emergency is when someone is being threatened or at risk of getting injured, or a crime is in progress.

Call 101 for non-emergencies: such as reporting a crime that has already taken place, non-urgent incident, contacting local officers etc

You can also contact local Police as follows:

PCSO Nicola CLARK – nicola.clark@wiltshire.pnn.police.uk

PC Matt HOLLAND – Community Policing Co-Ordinator

CPTSouthWiltshire@wiltshire.pnn.police.uk

Community Messaging – for emailed crime reports and local policing updates, sign up at www.wiltsmessaging.co.uk

Social media – for local policing updates follow us on Facebook **@salisburypolice** and Twitter **@SouthWiltsCPT**



Sixpenny Handley and Chalke Valley Practice

Doves Meadow Surgery, Broad Chalke: 01722 780282

Sixpenny Handley Surgery: 01725 552500

www.sixpennydocs.co.uk



Chalke Valley Flower Club

We are holding a Workshop/Practice morning



Entitled 'Landscape'



At The Lodge on

Saturday 7th March,

9.45 to 12.30pm

Members, non-members and children are invited. Tea, coffee, squash and biscuits will be available, do come and join us.

Please contact Jan Pickford for full details

On Wednesday, 25th March at 7pm in

The Village Hall, Broad Chalke

**We are having a Talk, 'A Flower Experience' given by
Maureen Hinton**

WILTSHIRE MOBILE LIBRARY

The mobile library will be visiting **The Styles** in Bishopstone on the following dates, arriving at 1115 and departing at 1135:

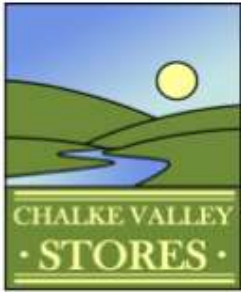
Thursday 19th March 2020

Thursday 16th April 2020

Thursday 14th May 2020



March is named after Mars, the Roman god of war as it was the month in which the military campaigning season got under way after winter.



Shop: Open weekdays 8.30am - 6pm (4pm on Saturdays)
Coffee Shop: Open weekdays 9am - 4.30pm
(until 4pm on Saturdays for breakfast, lunch, tea and meetings)
Post Office: Open Mon, Tues & Thurs 9.30am –1.30pm:
w: www.chalkevalleystores.co.uk
e: info@chalkevalleystores.co.uk
Tel: 01722-780998

INTRODUCING OUR NEW MAIN SUPPLIER

We think we have at last found the ideal supplier for the HUB and so we are pleased to announce that a contract has been agreed with Bestway (Wholesale). Bestway is the UK's largest independent supplier to retailers such as ourselves. In addition to Bestway's own brand products, being independent, they have no restriction in supplying an almost limitless amount of other brands. We feel confident that this is going to prove a positive development for our customers who will start to notice a much wider choice of products than we have been able to offer before.

INTRODUCING OUR ALL SINGING ALL DANCING NEW COFFEE MACHINE!

We are indeed very proud of our new coffee machine. You name it, it can make it! The blend is a subtle mixture of Brazilian, Ugandan, Peruvian beans roasted to produce a richer, darker delicious flavour. Feedback so far has been very favourable, so do please try it if you haven't already. All the favourites are available from lattes, flat whites and cappuccino to espressos, americanos, and even iced coffee! And all varieties have a decaffeinated option. For those a bit suspicious of these new fangled machines rest assured the trusty old cafetiere will still be available.

GLASS MILK BOTTLES ARE BACK IN "FASHION"

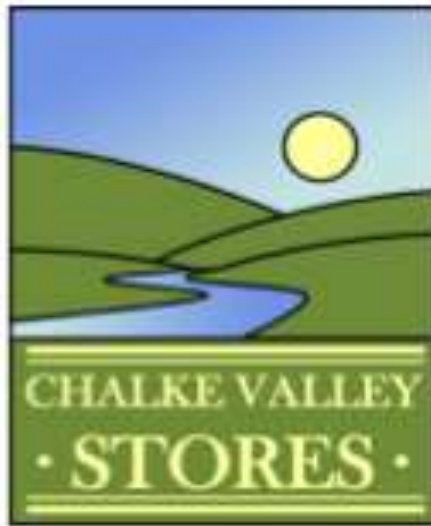
Many of our customers will have fond memories of glass milk bottles and now, due to the war on plastic, they are back and available as an option in the HUB. And you can buy your cream in glass bottles too. Our milk is supplied by Pensworth Dairies, a Wiltshire-based family business now supplying milk throughout the south of England and Wales.

ANNOUNCING OUR NEW DELIVERY SERVICE

Tony has run a small trial to see if this might prove popular and there are early signs that this is a service our local customers would appreciate. So rather than the hassle of flogging in to a hectic supermarket, why not consider doing your weekly shop by simply telephoning the HUB with your requirements and having them delivered to your front door at a time of your choice. We may not be Ocado or Tesco but we can offer a far more personal local service. Depending on how this develops, we will look at ways of extending and improving on what we hope will prove to be a popular idea. We make no apology for trying to compete with the local supermarkets and the national delivery services because we want, indeed need your business for the HUB to increase sales and thrive in the long-term.

ANNUAL MEMBERS' MEETING

This will be held on Tuesday 24th March, this year in the **Bowerchalke Village Hall** starting at 7.30pm.



VOLUNTEERS

YOUR HUB NEEDS YOU

NOW!

THE HUB IS OWNED BY THE LOCAL COMMUNITY.
IT WAS CREATED FOR THE BENEFIT OF EVERYONE
LIVING IN THE CHALKE VALLEY.

IT IS A HIGHLY VALUED FACILITY BUT IT CANNOT BE
TAKEN FOR GRANTED. IT WILL NOT SURVIVE WITHOUT
THE INVOLVEMENT AND COMMITMENT OF
VOLUNTEERS.

PLEASE CONSIDER BECOMING A VOLUNTEER. EVEN A
COUPLE OF HOURS A WEEK WOULD HELP.

TO FIND OUT MORE CONTACT TONY PATEL ON
01722 780 998 AND DO SOMETHING REALLY
WORTHWHILE FOR YOUR LOCAL COMMUNITY.

Chalke Valley Link Scheme AGM

The Scheme's Annual General Meeting will be held at Bishopstone Village Hall on Thursday, 2 April at 7.30pm. The Scheme is a registered charity whose volunteers provide transport to residents of the Chalke Valley who need it. The Scheme's volunteers and users are invited to attend the AGM. Any other residents of the Valley who would like to know more about the Scheme would also be most welcome and should please contact the Secretary, John Lace, at Bingham's Farmhouse, Bowerchalke (01722 780214).

The Trussell Trust

This last month I delivered 20.5 kgs of donations, thank you all very much.

This month they are asking particularly for:-

Rice

Tinned Ham

UHT long Life Milk

Long Life Fruit Juices

Sponge Puddings

Dried Milk

They are saying that they have an ample sufficiency of Cereal, Pasta, Tea, Pasta Sauce and Baked Beans.

So please if you are considering making a donation buy them something off the list of wanted items.

In their monthly newsletter, available online, they have included the latest report from the Joseph Rowntree Foundation which reveals that the child poverty rate is higher than it has been for 20 years and poverty among pensioners and those in work also rising.

If you would like to know more please go to their web site www.trusselltrust.org it is absolutely full of interesting information as to what they do and what their aims are. Have a look.

As usual donations can be left in the box in the church porch where they are removed regularly or at The Old Post Office, The Cross, either ring the doorbell or leave them on the step. If you cannot get them to either drop off point then please phone me and I will arrange to collect at your convenience.

Regards,

Judy Barrett (01722 780306)





The Churchfitters is a folk band like no other. These four dynamic personalities from England, Ireland and France present a fast-paced, infectious show full of fresh, original songwriting as well as rearranged songs and tunes from the British Isles, uniting the rhythms of rock, pop and jazz.

A folk band like no other. A double bass made out of a saucepan. Heart-wrenching vocals accompanied by a musical saw. Foot-stompingly fast fiddle mixed with infectious funk-rock bouzouki. And traditional tunes reinvigorated with mesmerising jazz sax.

'Musicians who know how to wring every last drop of passion from a song' (www.folking.com).

Official website:
churchfitters.com

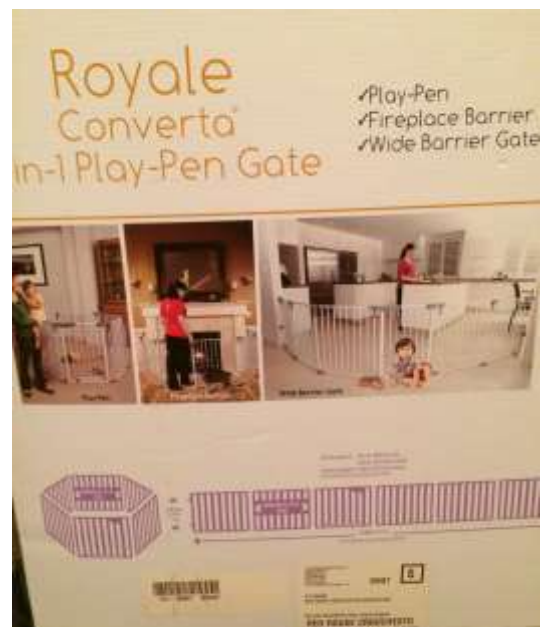


STaB Selling Spot

“Dream Baby Royale Converta” 3 in 1, can be used as a dog-proof baby play pen, fireplace barrier or wide barrier (3.8m), with a two-way step release gate. Wall mounting brackets included in box.

Hardly used. Original price £79.

Offers considered. Call 780002.



Rambling with Zinnie



Well, sadly we had our last ramble with Zinnie on Sunday 9th February, when Jo and I took her for a walk round Faulston and Croucheston. The plan was to miss the rain, but no sooner had we started to cross Faulston field when down it came. By the time we had passed Croucheston House, we were soaked and so was poor Zinnie! Home we went, but Zinnie was evidently off-colour on Monday and again on Tuesday, and very sadly she died early on Wednesday morning in her bed. She was aged 13 and $\frac{3}{4}$ years, slightly overweight and suffering from breathing problems for over a year, and a hacking cough for the last few months.

Her demise is a great loss to us all, and we miss her enormously and all the wonderful walks and swims she had with us either in the village, or the Valley, or in



Harewarren woods. Zinnie was born in April 2006 and came from a family home near Andover. She holidayed regularly with us in Cornwall, when we had a family holiday home near Bude. She loved to walk, to swim, to surf, to scramble over rocks and of course to eat!! Nevertheless, I will continue rambling (Not too hard really!!), but without my wonderful canine companion, as the Editor referred to her! She was such a friend and so calm and good!

But what a month it has been, wet, windy and watery for us all. The farmers worried about the crops now inundated with water. The livestock so cold and wet, and the little bridges in the village feeling the effects of all that water rushing down the Ebble, with such power and for so long.

We, in the Croft, have suffered terribly: one of the trees on our green was blown over on Sunday night! A severe loss to the residents!!

So, I close with sadness, and thank all the other dogs and children and parents who Zinnie met on our walks for their friendship and fun. To all dog-walkers, keep on going, and I look forward to seeing you about very soon.

Poor Zinnie, but sure she is fine now in the great kennel in the sky!! This is the final Rambling with Zinnie ... but watch out for more of mine!



James Thompson.

Dog Owners

It's a while since this subject has had an airing in STaB (Nov last year - which means 2 editions when it hasn't been raised. Is this a record?). However, as someone who regularly takes his 2 year old toddler for a short totter along the lanes of Bishopstone, I am particularly attuned to the issue. Toddlers are naturally inquisitive, reluctant to walk in straight lines and prone to veering off onto verges. Twice in the last month I have had to clean dog mess off his wellies and many more times have only just spotted the danger in time and managed to steer him away. Unfortunately the bottom of Harvest Lane and Faulston seem to be one of the main thoroughfares for dog walkers and the amount of mess is on the increase. I am well aware that most dog walkers are responsible and pick up their mess. However, there is obviously a hard core who don't.

Dog mess can spread of some very nasty infections and diseases and a pile of dog mess can contain one million microscopic Toxocara Eggs. Toxocaris is highly infectious, **especially to children**. Typical toxocaris symptoms include dizziness and nausea, asthma and epileptic seizures. More seriously, it can lead to serious eye damage, even permanent blindness. Dog mess also harbours parasites that can harm farm animals especially cows and sheep.

So - a polite reminder. It is an offence to fail to pick up after your dog on roadways and public footpaths. It is totally unacceptable to allow your dog to foul on or near verges or footpaths across farmland.

If you don't pick up after your dog, you are putting at risk the health of young children in the village and creating a thoroughly unpleasant environment for other users of the countryside. It's your dog and it's your responsibility.

Rob Pendleton



**FARM
ANIMALS
NEARBY?**



**DOGS ON
A LEAD.**

Help us to protect
Wiltshire's livestock.



After a tragic incident in February where a loose dog attacked a ewe (which then had to be put down) in Broad Chalke, this is a reminder to all dog owners to keep their dogs on leads in any area where there is livestock. Negligence in this matter can cause immense stress to cattle and sheep, as well as potential physical harm - which then of course causes financial strain to the farmer concerned. KP

Celebration at Coombe Bissett Primary

There have been plenty of reasons to celebrate at Coombe Bissett Primary this last term.

We have been *Committed* to teaching children 'Values for Life', sharing life lessons from the Bible and applying them to real life. Each week the children share names of fellow pupils and staff that have demonstrated these values and list them on a scroll which is then shared in collective worship. Last term the children were learning about LOVE and their love of others – 'Love their neighbour as they Love themselves'; and love for those less fortunate than themselves.

This term our Value for Life is HOPE. The school has high hopes for the children at Coombe Bissett and, together with their families, encouraging the children to set high targets for themselves – show they have great potential, how they can achieve so much by setting challenges and learning perseverance. These Values for Life help the children to deepen their life learnings, preparing them for when they 'fly the nest'.

Care - We reward the children's behaviour and love of learning with tokens which are counted by each team Captain each week. At the end of each term the winning team choose a fun team activity to do and a charity for which to fundraise. The Autumn Term team winners for the tokens earned was Yellow Team. They met and voted for their reward – they chose to make 'smorgs' (biscuits / marshmallow / icing / sprinkles) one lunchtime. Yellow Team also chose the whole school charity for Spring – they have chosen to support the RSPCA in Australia to help care for the displaced and injured animals as a result of the Australian Bush fires. The children will plan fundraising events, such as dress up days and bake sales, for this charity.



December always brings opportunities to share our love of *Creativity* with our community. From our contribution to the St Thomas Christmas Tree Festival, parading Lanterns through the village, local carol singing, to the Christingle service, the entire school community embraced the Christmas festivities.

There has also been opportunity for the school community to share with the children. The 100 Club and Friends of CB Primary contributed to gifts (books) and Christmas dinner for the children. On the first day back in January the children were treated to a fabulous panto performed by a travelling Theatre Company, compliments of the 100 club.

In January, the Sale of Sales is one of our biggest and most enjoyable fundraisers. The Friends of Coombe Bissett Primary work closely with Salisbury Hospice and the stallholders, coordinated by Daphne Woolnough, to bring an amazing array of quality items to purchase, complimented by a scrumptious array of cakes, quiche and teas.

Bags2Schools was another successful fundraiser whereby the company paid the school per kilogram of suitable items to be recycled. This has replaced our popular annual Jumble Sale bringing £127 to our Friends' Fund. Look out for future opportunities to 'Spring clean'.

During February the children have had a visit from the 'Life Van' (Life Education Centre) – this is supported by our Community Police Team and the 'Friends', to support their PSHE curriculum and learning about their bodies, how to take care of them and how their relationships, food, drink, drugs and other substances can affect them. This is a valuable learning resource relying hugely on grants from local Rotary clubs, companies and charities.

Working toward common goals – Community projects. Community is extremely important to Coombe Bissett Primary. We are excited to share news of our latest community projects. First of all we have been awarded funding from the Wiltshire CEP, with assistance and funding from the parish and church, towards a Reflection Garden (Prayer Garden). This compliments our Nurture Project, giving everyone a sensory area to escape to, a place to pray and reflect. We hope to get some assistance to develop this project and nurture its growth. The children will also be fundraising towards this project.

We also have in the pipeline a plan to develop a Forest School, with assistance from the team at Wiltshire Wildlife, and other developing funding streams. The vision is to develop outdoor learning and share our love of nature.

To support the full curriculum schedule there are numerous Inter team and Inter school sports tournaments as well as numerous extracurricular activities in and out of the school. We believe that this helps develop the 'whole child' – in and out.

In the background the entire staff and governing team have been working together to develop new school values that best represent our school vision and ethos. To compliment this work the children have been helping design artwork to represent these values, exploring biblical references, signs and symbols. After consultation some of this artwork will be on display in the school. These values form the foundation for our entire curriculum and school objectives.

So much news to share. A huge thank you to the community for the continued support to our school. We are truly blessed by the care and commitment shared by the whole school community. Stay tuned for more exciting developments.



The staff and children all dressed up for 'Super Hero Day'!

Village Memories - Margaret Tryhorn (née Briant)

At my son Roger's wedding in Salisbury Cathedral, July 2005



Joe and I at Windwhistle Farm, January 2020



HOW LONG HAVE YOU LIVED IN BISHOPSTONE?

I was born in 1949 at Stratford Tony, and we lived with my grandparents in a cottage by the church until I was 9. We moved to Meadow View in Bishopstone and I went to the local school when Mrs Seager was Headmistress. As children we had lots of fun playing in the river, catching fish, scrumping apples, walking up the drove by Throope, and I remember playing badminton with Norman Barter and the team. We caught the bus into Salisbury for the annual funfair. Ruby Thorne started the Youth Club with 60 kids at Manor Farm and it became very popular with a junior, intermediate and senior section. We enjoyed lots of outings together. We played in the barn, had Halloween parties, and annual Carol Singing took place through the village. For two days running we covered most of the houses. The harmonium was loaded onto the Landrover when Reg Thorne would play to accompany the Youth Club leaders and members. We used to walk along the river to the Fox and Goose on a Sunday night for crisps and Vimto! In summer Freda Curtis and I would do the cricket teas. My dad worked for Blinks, painters and decorators in Broad Chalke, and also did gardening for Cecil Beaton, before he died in 1973. My mum cleaned for people in the village, and carried on after she was widowed. I used to help my future mother-in-law (Mike's mum) at wedding receptions when she made cakes. Rev Humphrey Hall confirmed us all as a family in the early 1960s. I became President of the WI in Bishopstone for a short time in the late 1960s, preventing it from closing when nobody else stepped in.

WORK

When I left Wilton school I trained at Salisbury College for 2 years before starting as a secretary. For my placement I was sent to the estate agents Rawlence & Squarey and, when I finished my course, they asked me to stay on with them. So I became familiar with office work which has helped me through life.

HOW DID YOU MEET YOUR HUSBAND?

I married Mike Tryhorn in 1968 having met watching local football and cricket matches, and at village dances, where Joe Thorne was often playing with his group at the time. Mike and I rented a house in Salisbury, then came back to live with Mum in Bishopstone. After that we bought a house in Windsor Street, Salisbury, and later moved to Empire Road. Mike worked for British Telecom and we later moved to Totton. We had 3 children: 2 sons, Nigel and Roger, and a daughter, Samantha. Soon after my daughter was born my dad died, aged 46, and my mum later had a

stroke, so we were busy looking after her in Meadow View. While the children were young I helped to run the Bemerton Playgroup near Skew Bridge for 15 years. We raised money through social events with the Playgroup. Recently we had a 50th anniversary party of old members of the Playgroup. I also became involved with the Tufty Club, teaching children about road safety.

Soon after moving to Totton I ran another playgroup mainly for single parents, and at this time my middle son, Nigel, developed leukaemia. He was poorly for 3 years and died in 1989. During this time life was so busy looking after him and sometimes being with him in hospital in London. The Piam Brown Oncology and Haematology Centre in Southampton arranged a lot of outings and treats for young patients, supported by firms like Bryant: in 1988 Nigel and I flew in Concorde around the Channel Islands. The good thing to come out of this is, that 18 months after Nigel died, the palliative care sister, Margaret Evans, who had supported me a lot during this time, asked if I would like to work for McMillan Nurses on the Piam Brown Ward in Southampton Hospital. I worked there for 28 years. We always kept in touch and I visited her later in Denver and Colorado.

My mum died in 1997, and Mike then died in 1998, aged only 50 years, so I spent nearly 20 years on my own. During that time I helped to run a Scout pack, and became involved with the Church of England in Totton as a Sunday School teacher, lay pastor, and ran Messy Church. I also became involved with charity work in the church and particularly Rwanda, raising funds for people to go out there to help.

Having known Joe Thorne in childhood, I re-met up with him at the funeral of a mutual friend's husband in Coombe Bissett. Sadly Joe lost his wife, Viv, not long afterwards, and we met up again a few years later, after my cousin brought us together again. Joe and I texted and phoned for months, we met for lunch and he gave me some red roses – and the rest is history! So then I moved in 2017 up to Windwhistle Farm with Joe, where we hope to create our own memories.

WHAT ARE YOUR HOBBIES OR PASTIMES?

Crocheting and reading, making my children's clothes when they were young.

WHAT WAS YOUR FAVOURITE HOLIDAY?

I love the beach, and Joe and I had a good trip to Swanage last year on our first holiday together. A visit to Atlanta and Washington with Pippa, who I worked with at Macmillan Nurses in Southampton. I also took 2 of my 5 grandchildren to Disneyland Paris and later to Disney in Orlando.

YOUR FAVOURITE BOOK

The Bible

FAVOURITE MUSIC

Rock and roll, Joe's music, and I remember dancing around the kitchen with Freda Curtis as teenagers. Joe and Steve playing Puff the Magic Dragon at the Harvest Festival in the Village Hall in the 1960s.

ANY THINGS ON YOUR BUCKET LIST?

I always wanted to go to Ephesus in Turkey, and also to Egypt.

ANY REGRETS IN LIFE?

When my son was ill, I wish I'd spent more time with my other son and daughter.

IMPORTANT THINGS YOU'VE LEARNED IN LIFE

Try to be happy. Accept people for what they are. Love your neighbour.

Puzzle Page



Enjoy the Spring colouring above.

And below... can you solve these 'dingbats'? What phrases do they represent? Answers on p 55.

ESSE

DANCING

LEAST

DARK

**TTTT
WINKS**

TOIGUE

BLOOD H₂O

SFIRM

**B
U
R**

WINTER

SPRING



SUMMER

AUTUMN



Recipe of the Month - Spring Fruit Crumble

By Alice Lyons

A lovely way of using some of the first spring rhubarb.

Serves 8

Ingredients

400g rhubarb, cut into 2 cm pieces

4 pears, peeled and cut into 2 cm chunks

1 large pineapple, peeled and cut into 2 cm chunks

3 tbsp stem ginger, chopped

3 tbsp ginger syrup from the stem ginger jar

Crumble topping

250g plain flour

200g butter

200g Demerara sugar

Place the chopped fruit, stem ginger and ginger syrup into an ovenproof dish. Make the crumble topping by rubbing the butter into the flour and stirring in the sugar. Sprinkle on top of the fruit.

Bake for about 35-40 minutes in an oven at medium heat (about 180 C) until the crumble is golden and the fruit is cooked.

Serve warm with custard, cream or ice cream.



Tales from the Time Capsule

In April 2018 George Brutton, one of our churchwardens, discovered a Smiths Crisps tin box carefully wrapped in a plastic sheet and fastened with wire to a roof timber in Bishopstone Church. The box turned out to be a time-capsule, created we think in 1963 (some items date back to 1954), with other things added from various years up until the 1980s. Each month in STaB we will be showing you a few pieces of interest from this fascinating time capsule.

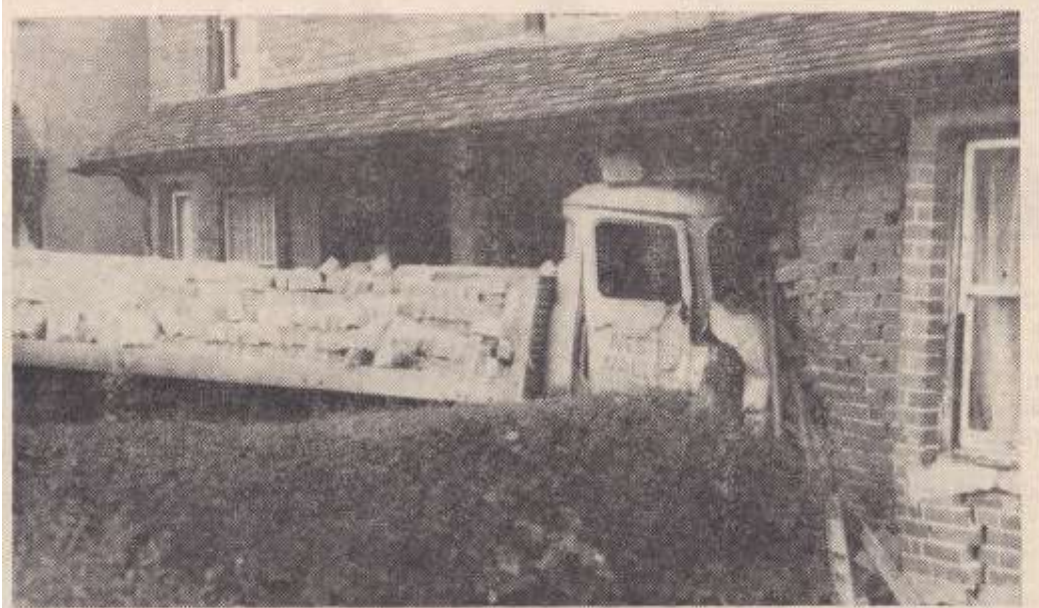
Lorry's plunge renders couple homeless

MR. WILLIAM BATCHELOR, aged 65, and his wife **Ada**, were sitting in a back room of their home at 41, Downton-road, Salisbury, when the walls shook from an ear-splitting crash. A lorry laden with five tons of bricks had careered out of control for 50 yards and plunged into their front parlour.

This month we look back to Friday 19th July 1963 when the Salisbury Journal reported a nasty accident on the Downton Road. It seems very fortunate that no one was killed... I wonder what was the cause of the accident? I can't find any record of this online.

Miraculously, no one was killed, even though the lorry demolished a parked car, a concrete lamp-standard and a garden wall before ploughing into the row of semi-detached houses which stand about 15 yards back from the road.

The lorry driver, Mr. Frederick Olde, of Waywell-road, West Howe, Bournemouth, was taken to Salisbury Infirmary and treated for cuts and shock before being allowed home. The cause of the accident is not yet known.



The lorry which crashed into the parlour of 41, Downton-road, Salisbury, on Tuesday. (B3837B). — See page 1.

Nature Notes - Little Egrets

Not too long ago, the spotting of a Little Egret would have been a rarity on the Ebbles but they are now fairly frequent visitors.

The genus name comes from the Provençal French Aigrette, "egret", a diminutive of Aigron, "heron". They are distinguished from their rarer, larger cousins, the Great Egret by their size, (obviously!). However, unless they are standing next to each other, this is not an easy call. A clearer distinction is the yellow feet of the Little Egret. As they spend much of their time standing in the water, this too is not necessarily straightforward. The best distinguishing feature is the



A Little Egret landing on the Ebbles near the bridge on Faulston Lane



A Little Egret on the Ebbles, showing the dark beak which distinguishes it from its larger cousin.

dark beak of the Little Egret.

Once common in the UK, the Little Egret became extinct here in the late Medieval period due to over-hunting and climate change during the Little Ice Age. Conservation measures were introduced in Europe in the 1950s and numbers began to recover and spread north. The first UK breeding took place on Brownsea Island in 1979 and about 4500 birds now overwinter in the UK.

The birthstone for March is aquamarine and the flowers are the daffodil or violet.

March is the only month with three consecutive consonants in its name in English.

In ancient Rome before Julius Caesar's calendar reform, March was the first month of the year.

Wiltshire
Wildlife Trust



Explore and make a difference for the wildlife on your doorstep by attending one of the many events taking place at Coombe Bissett Down nature reserve. Events include wildlife identification, guided walks, arts and crafts and much more!

Nest Box Making

Monday 17th February, 10am – 1pm
Coombe Bissett & Homington Village Hall

Felt making

Saturday 14th March, 10am – 3pm
Coombe Bissett & Homington Village Hall

Archaeology Geocache Trail

Wednesday 8th April, 10am – 1pm
Coombe Bissett Down

Bat Walk

Friday 15th May, 8.45 – 10pm
Coombe Bissett Down

Chalk Grassland Wildflower Identification

Sunday 7th June, 9.30am – 12.30pm
Coombe Bissett Down

Places are free due to the support of the National Lottery Heritage Fund. For further information and to book your free place please contact Project Officer, Melanie Evans on:

07827848986

CBDProject@wiltshirewildlife.org



More 20th century UK Prime Ministers had birthdays in March than any other month.

Sarah's Gardening Tips

1. For colourful interest in a woodland spot try hollies or Viburnum x hillieri Winton, both will tolerate shade and dry soil and give lovely autumn foliage.
2. Plan ahead for water-saving in the Summer while we're getting plenty of rain. Rig up an extra water butt or other receptacles.
3. If you want the colour of your flowers to look harmonious keep to similar tones e.g. Pink, purple and red or green, yellow and orange.
4. Give clematis a dose of blood, fish and bonemeal in late winter/early spring to help boost their energy levels
5. If you want to cheer up the inside of your house try these colourful house-plants: Angel wings (Caladium bicolor), Elephant's ear (Alocasia cuprea), Moth orchid (Phalaenopsis).
6. Hard prune buddleja to produce strong growth.

Gardening requires lots of water - most of it in the form of perspiration

Lou Erickson



Question: What is the more common name for the strelitzia? (Answer on p53)

Sarah's Garden Services: 07971 909 548

Email: mygardenservices@outlook.com

METAL ARTWORK

BLACKSMITHS & GENERAL ENGINEERS

01722 781212

www.metal-artwork.co.uk



Pregnant?

Looking for evidenced-based childbirth education?
Considering having an extra birth partner?

A doula can...

- Stay with you throughout labour and birth to help you achieve your specific choices
- Offer 1:1 breastfeeding and general feeding support
- Provide help at home for those first few days and weeks after birth

Doula Cally Edwards offers emotional and physical support to help you truly enjoy your pregnancy, birth and early days with your new baby



www.callyedwards.com

   @doulacallyedwards

Come and
join the fun at

Breastfeeding
Support at this group
www.callyedwards.com

Bishopstone Playgroup

Term-time Fridays 9:30-11am, in
Bishopstone Village Hall
(just down the road from the
White Hart pub)

£2 for one child, £2.50 for 2+
Includes tea and coffee for adults
and snacks for all!

Find us on Facebook at 'Bishopstone Playgroup'

Ebble Fencing



- Bespoke Fences and Gates
- Professional Service
- 20+ Years Experience
- Fully Insured
- Free Quotations

07789 707959

www.ebblefencing.com



Steak Night for Two Tuesday
2 x 6oz Hampshire Rump Steaks & Two
Glasses of 175ml Wine or Pint of Coke Zero,
Diet Coke, Lemonade
£25

Curry Night
Friday Nights
Two Homemade Curries served with Rice,
Poppadum or Naan Bread
£18

To book a table for either of these evenings
phone us on 01722 780244

Last Thursday of Every Month
QUIZ NIGHT
Winning Team wins a Meal Voucher
7.30pm start

The White Hart also caters for large parties
& set menus can be provided for your
convenience

Call us to reserve your table!!

Jennie Gilbert - Pottery



I make Stoneware pots
for the home. Perfect presents
for you or your friends.
You're very welcome to come
and visit the workshop.
I also run 2 day pottery courses,
please call or email for details.

4 St. Martin's Workshops
Manor Farm
Fifield Bavant
Broad Chalke
Salisbury
SP5 5HT

01722 780402
www.jenniegilbert.com
jennie.gilbert@yahoo.co.uk

Robin Higdon

Your local garage

Car repair, maintenance and pre-MOT preparation for all makes of car.

The Unit, Crouchston Farm, Bishopstone.
Phone: 01722 780606



The White Horse

at Quidhampton



The White Horse at Quidhampton offers excellent food, friendly service, delicious wines and top-quality ales in a traditional village pub environment, where we believe in old-style pub values.

- 3 CASK ALES, WITH TWO EVER CHANGING GUESTS
- LOCALLY SOURCED INGREDIENTS FROM LOCAL SUPPLIERS
- HOME COOKED MENU OF TRADITIONAL PUB FAVOURITES
- DELICIOUS SUNDAY ROASTS SERVED EVERY WEEK
- MONTHLY CHARITY QUIZ NIGHT (1ST THURSDAY)
- LOG BURNER, BEER GARDEN AND CAR PARK
- FUNCTION ROOM & SKITTLE ALLEY FOR HIRE
- PARTIES, GATHERINGS & FUNCTIONS CATERED FOR



FOR RESERVATIONS OR MORE INFORMATION CALL 01722 744448
OR VISIT OUR WEBSITE

WWW.QUIDHAMPTONWHITEHORSE.CO.UK



evolve

TREE SERVICES

call Stuart Larter for a free quote

07563 645043
01747 871753



Tree Specialist,
Fully Qualified and Insured

www.evolveetree.co.uk

FISH & CHIP VAN

EVERY WEDNESDAY

COOMBE BISSETT STORES

5PM - 8PM

EVERY THURSDAY

CHALKE VALLEY SPORTS CENTRE

KNIGHTON RD, BROADCHALKE

4.30PM - 6PM

&

OUTSIDE 'DINTON PANTRY'

HINDON RD, DINTON

6.45PM - 8PM

OUR CURRENT MENU OFFERS CHIP SHOP CLASSICS INCLUDING SKINLESS BONELESS COD FILLET, SCAMPI, FISHCAKES, BATTERED SAUSAGES & BURGERS PLUS TRIMMINGS INCLUDING OUR OWN 'HOMEMADE' TARTARE SAUCE.

TELEPHONE ORDERS ACCEPTED DURING OPENING HOURS BY PHONING 07714438356

FOR MORE INFORMATION & FULL MENU PLEASE VISIT WWW.FRYINGTUCK.CO.UK

PA CARE DIRECTORY

CARE AND HOME HELP

The PA care directory have spaces for new clients a free to use service matching a carer to your needs.

CALL US TODAY ON 07557417563 FOR YOUR OWN PERSONALISED TAILORED HELP IN YOUR OWN HOME.

EMAIL HSPRAGG83@YAHOO.COM
OR CALL FOR HELP.



Picture Framing

We will frame: Photographs
Paintings, Prints, 3D objects e.g.
Sports Shirts, Memorabilia and
much more..

Call to visit our Coombe Bissett workshop:

01722 718695 or 07747 017221

Email: info@spireframing.co.uk

www.spireframing.co.uk

Be Inspired!

ONEHUNDREDWORKS

one hundred works of art for sale

WWW.ONEHUNDREDWORKS.COM

Claudine's Fitness FOR MEN AND WOMEN



Enjoy fitness routines designed specifically with you in mind in a fun, relaxed environment.

Claudine is a member of fitness professionals. As a certified instructor of pilates and HIIT, she teaches a variety of fitness classes for men and women of all ages and abilities.

Timetable

Monday	09:15	Fitness Pilates	Broadchalke Sports Hall
Monday	10:15	HIIT	Broadchalke Sports Hall
Monday	13:45	Pilates	Broadchalke Sports Hall
Monday	16:30	Pilates	Sixpenny Handley Village Hall
Monday	19:00	Better Backs	Bishopstone Village Hall
Tuesday	09:15	Pilates	Coombe Bissett Village Hall
Tuesday	14:00	Pilates	Radnor Hall
Tuesday	18:00	Fitness Pilates	Britford Memorial Hall
Tuesday	19:00	Pilates	Britford Memorial Hall
Wednesday	09:30	Better Backs	Bishopstone Village Hall
Wednesday	18:00	Pilates	Bishopstone Village Hall
Wednesday	19:00	HIIT	Bishopstone Village Hall
Wednesday	19:30	Pilates	Bishopstone Village Hall
Friday	09:15	Fitness Pilates	Broadchalke Sports Hall
Friday	11:00	Pilates	Bowerchalke Village Hall

Pilates - Improves balance, flexibility, core and back strength, and joint mobility.

Pilates for Better Backs (Better Backs) - Focuses on the back, hips and buttocks.

Fitness Pilates - Claudine's best of all disciplines, but not as intensive as HIIT.

High Intensity Interval Training (HIIT) - Getting you fitter faster without equipment.

Encouragement and achievement together

For more information call Claudine on 07788 587937

PARKER BULLEN

SOLICITORS

Private Client

**Helping you plan for your family's future,
including:-**

- **Preparation of Wills**
- **Administration of Estates**
- **Lasting Powers of Attorney and General Powers of Attorney**
- **Setting up and Administration of Trusts**
- **Income Tax Advice and Returns**
- **Capital Gains and Inheritance Tax Planning**

We are currently offering a **10% discount** on our standard fees for Wills to all those who quote "**STaB Parish Magazine**" when booking an appointment with our Private Client team.

Home visits in the local area available on request.

Salisbury Office

www.parkerbullen.com

Andover Office

Tel: 01722 412 000

Twitter: @ParkerBullen

Tel: 01264 400 500

Returning online shopping?

Simply bring your item to Coombe Bissett Stores and Post Office and we will do the rest. Do you have a code to scan? We do that too! We accept any size or shape of parcel (the largest so far was a bicycle) and we open every day including Sunday mornings.



Please note that only Post Office / Royal Mail codes can be processed here, not MyHermes or Collect+.

Coombe Bissett Stores • Homington Road • Coombe Bissett • SP5 4LR • 01722 718852



Shop and Post Office hours
Monday to Friday 7.00 am – 6.30 pm Saturday 7.00 am – 1.00 pm
Sunday 8.00 am – 11.30 am
Closed Bank Holiday Mondays



For all your pest issues, Local, fully insured, fully qualified BPCA Member
Wasps, Rats, Mice, Cluster fly, Clothes Moth, Fleas, Squirrels, Bed bugs
Call now- **07711 259749** Email- **info@wiltshirepestservices.co.uk**

Comfortable and cosy self-contained accommodation.

Little Bridge Studio

Bishopstone

Sleeps 3 plus cot.

Large open planned living space with wood burning stove.

Shower room and separate bathroom.

Contact: Alice Lyons - 01722 781137 or 07811455756

SAUL MITCHELL

TRADITIONAL PAINTER & DECORATOR

Tel: 01722 484094 or Mob: 07787 927455

saulmitchelldecorator.co.uk

smitchell852@btinternet.com



Bespoke grooming within the heart of
the Chalke Valley

Annie on 07850 508680

Charlotte Steel, VTCT, IHHT

Complementary Therapist

The Chapel, Bowerchalke, 01722 780107 mob: 07811 944328

Email: cjsteel92@gmail.com

Hot Stone Massage: Full body (90 mins) £60

Back, neck & shoulders (1hr) £47

Aromatherapy Massage: Full body (90 mins) £53

Back, neck & shoulders (1hr) £40

Reflexology: Initial consultation (1hr) £33

Further treatments (50 min) £30

Plus 30 minute face/head massage £47.50

Facial: Including, back, arm & head massage (75 mins) £57.50

For a further £14 massage appointments can be extended by 30 minutes to include extra work on problem areas or a relaxing head & face massage

Gift Vouchers Available



25 years of legal excellence

- ➔ Family
- ➔ Employment
- ➔ Litigation & Disputes
- ➔ Property
- ➔ Wills & Probate

Sampson Coward
SOLICITORS

St Mary's Chambers, 51 New Street, Salisbury, Wiltshire SP1 2PH

t: 01722 410664 e: mail@sampsoncoward.co.uk

www.sampsoncoward.co.uk

Sarah's Garden Services

Need help with your garden?



**Weeding, Planting, Mowing, Pond/Greenhouse Cleaning,
Holiday Watering etc**

No job too small!

07971 909 548

mygardenservices@outlook.com

Bishopstone based.

Wessex Contract Services

*Fencing, Landscaping,
Ground Care & Maintenance*

Lee Curtis

Tel: 01722780842

Mob: 07875018317

Email: lee@wessexcontractservices.co.uk





GRAY'S STONE STONE CARVING CARVING COURSES STUDIO & TUITION

Learn to carve in a supportive
and encouraging environment.

for more information visit:

www.grays-stone-carving.co.uk

or call tel: 07766464048

Unit 2 Knowle Farm, Bowerchalke, SP5 5BP

Prince's Pet Care

Where pets are in Safe Paws



*Home from home dog boarding
and home visits for all pets*

*Reliable, established, local business
Fully licensed, Insured, Pet 1st Aid and Disclosure Checked*

www.princespetcare.co.uk

01722 718823

info@princespetcare.co.uk



- Improves soil structure
- Suppresses weeds
- The PH is neutral
- Easy to handle
- Encourages good root growth
- Increases moisture retention
- Excellent for top mulching



*This product has been tested over a period
of five years and has performed
to a high standard*

Delivered in sealed bags

CONTACT: JIM WEBB

THE HOLLOW • BARBERS LANE • HOMINGTON
SALISBURY • SP5 4NL

Tel: 01722 718611 • Mobile: 0781 841 8822

GRAY'S BESPOKE STONE MEMORIALS CARVING & STUDIO INSCRIPTIONS

Creating memorials of
celebration and commemoration

for more information visit:

www.grays-stone-carving.co.uk

or call tel: 07766464048

Unit 2 Knowle Farm, Bowerchalke, SP5 5BP

NEW Garage (Harnham) Ltd

01722 321 330

Salisbury Original Car Care Clinic
Vehicle wide diagnostics, whatever
the problem, we have the solution

- ◆ All Auto electrical work undertaken.
- ◆ Class 3, 4 & 7 MOTs with Class 1 and 2 available on request.
- ◆ Air conditioning services carried out.
- ◆ Lease work undertaken.



NOW OFFERING PAYMENT ASSIST

Pay just 25% of your bill today
Spread the remaining cost over the next 3 months
NO FEE NO INTEREST NO CATCH



www.newgarageharnhamltd.co.uk

RAC
Approved Garage

GRAHAM DIMMER MOT CENTRE

MOT Tests on all types of vehicle up to 3,500kg

Servicing & General Repairs on all makes & models

Specialist vehicle diagnostics

Air Conditioning Repairs & Re-gassing

Electronic Wheel Alignment

Free Courtesy Car

01722 328344

Avon House, Newton Road, Churchfields, Salisbury, Wilts SP2 7QA

Email: info@grahamdimmermot.co.uk

www.grahamdimmermot.co.uk

S. WALLWORTH ELECTRICAL SERVICES LTD

FULLY QUALIFIED ELECTRICIAN, EMERGENCY REPAIRS

INSTALLATIONS – RE-WIRES, ELECTRICAL REPAIRS & TESTING

EXTRA SOCKETS & LIGHTING, NIGHT STORAGE HEATING, ELECTRIC SHOWERS

DOMESTIC & COMMERCIAL



FREE QUOTATIONS.

SIMON WALLWORTH

31 DEAN LANE, SIXPENNY HANDLEY

SALISBURY, WILTSHIRE

SP5 5PA

TEL: 01725 552545 MOB: 07826 928759

S.WALLWORTH@HOTMAIL.CO.UK

Pod & Pip

Workshop Open

Thursdays and Fridays 10-4pm

Saturday 930-1230

Fresh Flowers, Plants, Cards, Candles & Gifts

Pre-ordered bouquets for local
delivery/collection

Flower Workshops, Wedding & Event Flowers

Ebble House, Stratford Tony

Kevin Knight

Clock & Watch Repairs

Free estimates given

Over 30 years experience

Tel 01722 331969

Mob 07900 928451

Email:

kevindavidknight@gmail.com

HIGHSPEC WINDOW CLEANING

Other Cleaning Services Include:

- Gutters
- Fascias
- Driveways
- Patios
- Conservatories
- Walls
- Greenhouses
- Cladding
- Solar Panels
- Paths

T: 01425 650894

M: 07554 092670

www.hs-cleaning.co.uk

Tim Saunders Plumbing & Tiling Services

Complete Kitchens, Bathrooms & Wet rooms
Tanks, Cylinders, Pumps, Valves & Radiators
Taps, Basins, & Toilets

Unvented hot water system installation, repair
& servicing (G3 certificated)

Stuart Turner approved installer

Disabled/assisted living zero vat
installations/conversions

Wall & floor tiling

Free advice and estimates

Emergency repairs. No call out fees

Fully insured

07772 610190

Email: timsaundersps@gmail.com



BASED IN FOVANT

01722 714308
07541 358570

- Local
- BPCA trained
- RSPH qualified
- Sensible pricing
- Fully insured
- Reliable
- Discreet
- Evening & weekends



www.greystonespestcontrol.com

michael@greystonespestcontrol.com

LITTLE BANKSIDE

www.littlebankside.co.uk

Do you need extra space for visiting family & friends?
Self contained studio holiday let for 2 in Bishopstone.

Contact:
Hilary King
littlebankside@gmail.com
01722 780017

MADDY'S MENDING

ALL ALTERATIONS AND MENDING, FROM
BUTTONS TO BLINDS, CURTAINS TO CUSHIONS

No JOB Too Small!!!

CALL MADDY ON: 01725 519504 OR
0777 4207 423

FREE COLLECTION AND DELIVERY



SP Restoration

Antique Restorers

We offer our customers a specialist service in

Antique restoration, French polishing, Veneering, Complete table re-polishing, Wood turning and Desk leather inserts.

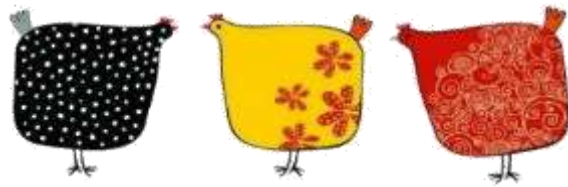
We have a fast chair repair service, we offer a collection and delivery service with free estimates. You're welcome to come visit us at our workshop:

Unit 1 St Martin's Workshops
Manor Farm
Fifield Bavant
Broadchalke, SP5 5HT

01722 780584



NEWBOURNE FARM



COMPOSTING

A local, family run business based in Rockbourne since 1995, offering green waste disposal and the sale of top quality accredited topsoil and compost.

On site processing of materials produces excellent screened 10mm top soil, landscaping compost for domestic and commercial use and agricultural spec compost.

Local delivery available for bulk bags or loose loads.

For more information about our products please contact

Rod 01725 518673 / 07896 544197 or

Andy 07766 163203

www.newbournecompost.co.uk





WILTON HOUSE ANTIQUES FAIR 2020

6th–8th March, 10.30am–5pm

Enquiries

01722 746728

www.wiltonhouse.com

Wilton House

Wilton

Salisbury

Wiltshire SP2 0BJ



📞 **07340 501 297**

✉ contact@cardinalcomputing.co.uk

🌐 www.cardinalcomputing.co.uk

FAST, FRIENDLY & RELIABLE

NO FIX / NO FEE

10+ YEARS EXPERIENCE

IN-HOME, PICK-UPS & RETURNS

Technology problems getting you down?

We'll get you set up again

Matthew Veale

Mobile Hairdresser Available 6 days per week

Reliable friendly service London Toni & Guy trained

Please call 01722 336821 or 07788 686829

Request from the Editorial Team:

If you use any of the businesses advertised here in STaB please do let them know that you found them/their details here in the magazine. This helps them to know that their advertising is working, and helps us to continue to receive revenue from advertising fees.

Also, if you know of any local businesses that might be interested in advertising with us, please do pass on our details to them.

Many thanks!

Advertising Rates

STaB - The Parish Magazine for the villages of Stratford Tony and Bishopstone

2019 Advertising rates – based on A5 page

STaB is delivered to around 300 houses in the parish, so your advert will reach many homes in the Chalke Valley. STaB is also published on the Bishopstone Village website: www.bishopstone-salisbury.co.uk

Price per year: 10 editions (Aug/Sept & Dec/Jan are joint editions)

Occasional adverts can be paid for at a pro-rata rate (1/10th of the annual rate per issue)

<div style="background-color: #f4a460; padding: 5px;">Full page</div> <div style="padding: 5px;">13x19cm</div> <div style="background-color: #f4a460; padding: 5px;">£110 per annum</div>	<div style="background-color: #f4a460; padding: 5px;">Half page</div> <div style="padding: 5px;">13x9.5cm</div> <div style="background-color: #f4a460; padding: 5px;">£60 per annum</div>	<table border="1" style="width: 100%; border-collapse: collapse;"> <tr> <td style="background-color: #f4a460; padding: 5px;">Quarter page</td> <td style="width: 20px;"></td> </tr> <tr> <td style="padding: 5px;">Portrait</td> <td></td> </tr> <tr> <td style="padding: 5px;">6.5x9.5cm</td> <td></td> </tr> <tr> <td style="background-color: #f4a460; padding: 5px;">£30 per annum</td> <td></td> </tr> </table>	Quarter page		Portrait		6.5x9.5cm		£30 per annum		<table border="1" style="width: 100%; border-collapse: collapse;"> <tr> <td style="background-color: #f4a460; padding: 5px;">Quarter page</td> </tr> <tr> <td style="padding: 5px;">Landscape 13x5cm</td> </tr> <tr> <td style="background-color: #f4a460; padding: 5px;">£30 per annum</td> </tr> </table>	Quarter page	Landscape 13x5cm	£30 per annum
Quarter page														
Portrait														
6.5x9.5cm														
£30 per annum														
Quarter page														
Landscape 13x5cm														
£30 per annum														

How to place your ad in STaB

1. Make a .pdf, .jpeg, or Word file of your ad, making sure it is the correct dimensions for publication (see table of sizes and prices above) and that it will reproduce well in black and white.
2. E-mail the file to Rachael Dew (ads.stab@gmail.com), stating what size of ad you would like, and how long you would like it to run for.
3. The deadline for publication is 5pm on the 20th of each month. Please send ads as early as possible.
4. When you have placed your order, you will receive an invoice with details of payment by cheque or bank transfer. Please pay within 14 days. Donations always welcome.
5. The Editor reserves the right to edit all contributions.

BISHOPSTONE PARISH COUNCIL

Councillors	Telephone
John Gibbon (Chairman)	01722 718551
Ali Thorne (Vice Chairman)	07768514133
Norman Barter	01722 780471
George Brutton	01722 718539
Anita Smith	01722 781213
Piers Edwards	01722 780079
Michelle Tatner	07968 842525
Parish Clerk	
Mike Ash Lower Thatch Flamstone Street Bishopstone SP5 4BZ	01722 781044 bishopstoneclerk@btinternet.com
Further information is on the village website: www.bishopstone-salisbury.co.uk	

THE VILLAGE HALL COMMITTEE MEMBERS

Chairman - Norman Barter	780471
Treasurer - Francis Taylor	780316
Entertainments - Sue Taylor	780316
Event bookings - Caroline Ash	781044
Hall bookings - Margaret Barter	780471
Hall maintenance - Nigel Peasley	780713
Minute secretary - Virginia Middleton-Smith	780444
Member - Pat Abbott	780002

The Village Hall is an important resource and offers a venue for a wide variety of events for the benefit of all. The Hall is supported by a large group of dedicated local people in addition to the Committee. We hope you will support events whenever you can and if you would like to join the wider group of Friends of the Village Hall then please contact any member of the committee.

Bishopstone Village Website

www.bishopstone-salisbury.co.uk

The village website carries a wealth of information about Bishopstone. There are pages devoted to the church, the Parish Council, what's on at the Village Hall, meetings, clubs, local organisations and village walks. There are even digital copies of this magazine.

If you want to have any information included on the website please contact either

Mike Ash (bishopstoneclerk@btinternet.com)

Or Roger Stockton (rogerstockton@icloud.com)

Letters to the Editor

Letters to STaB are very welcome, but the views expressed may not be those of the editorial team or the Parish Church Council.



Here's a sight you don't see very often: a beehive on a boat! During the recent period of heavy rain Simon and Lizzie Williams noticed that their beehive was in danger of being flooded, so what else to do, but load it into a boat and tow it to higher ground!

THANKS! A huge thanks to those who have helped to keep our village tidy and safe after the recent storms. Those who have removed fallen trees/branches, and also those who have picked up litter when the bins have blown over. Your efforts are noticed, and much appreciated.

Dingbats Answers from the Puzzle Page: A Twist of Fate; Line Dancing; Last but not Least; A Shot in the Dark; Forty Winks; Tongue-tied; Blood is Thicker than Water; Back to Business; Rub up the Wrong Way; No Spring Chicken.



Services in Chalke Valley Benefice – March 2020



BCP = Book of Common Prayer (Traditional Language), CW = Common Worship (Contemporary Language)

**Every Wednesday at 12.15pm, there is a short service of Holy Communion. In Lent, they will be at:
March – 4th Alvediston, 11th Charlton All Saints, 18th Homington, 25th Fifield Bavant. April – 1st Odstock**

1 March 1st Sunday of Lent	9.30am 9.30am 11.00am 11.00am 11.00am 11.00am 11.00am 6.00pm	Parish Communion (CW) Parish Communion (CW) Family Communion (CW) Mattins (BCP) Family Communion (CW) Family Service Morning Service Evensong (BCP)	Britford Broad Chalke Ebbesbourne Wake Berwick St John Coombe Bissett Nunton Bishopstone Homington	Jenny Taylor Catherine Blundell C Blundell / R Leake Lay Led Anna-Claar T-Rosingh Adrian Taylor Jenny Taylor Roger Leake
8 March 2nd Sunday of Lent	8.00am 9.30am 9.30am 11.00am 11.00am 10.30am 11.00am 3.00pm 6.00pm	Holy Communion (BCP) Parish Communion (CW) Parish Communion (CW) +APCM All-Age Service Choral Mattins (BCP) URC Morning Worship Family Service Evensong (BCP) Evensong (BCP)	Broad Chalke Odstock Bowerchalke Alvediston Charlton All Saints Broad Chalke Chapel Coombe Bissett Fifield Bavant Berwick St John	Catherine Blundell Anna-Claar T-Rosingh C Blundell / R Leake Biddy Trahair Lay Led tbc Jenny Taylor Biddy Trahair Lay Led
15 March 3rd Sunday of Lent	8.00am 9.30am 9.30am 10.30am 11.00am 11.00am 11.00am 11.00am	Holy Communion (BCP) Parish Communion (CW) Family Communion (CW) URC Holy Communion R3vive Parish Communion (CW) + APCM Parish Communion (CW) Mattins (BCP)	Bowerchalke Bishopstone Nunton Broad Chalke Chapel Broad Chalke V Hall Berwick St John Homington Ebbesbourne Wake	K R Smith / R Leake Jenny Taylor Anna-Claar T-Rosingh tbc Lay Led C Blundell / R Leake Jenny Taylor Lay Led
22 March MOTHERING SUNDAY	9.30am 9.30am 9.30am 10.00am 11.00am 11.00am 11.00am 11.00am	Family Communion (CW) + APCM Mothering Sunday Service Parish Communion (CW) Mothering Sunday Service Family Service Mothering Sunday Communion Mothering Sunday Service Parish Communion (CW)	Broad Chalke Bowerchalke Charlton All Saints Berwick St John Odstock Alvediston Coombe Bissett Bishopstone	Catherine Blundell Roger Leake Anna-Claar T-Rosingh Lay Led David Blundell Jenny Taylor Anna-Claar T-Rosingh Ann Philp
29 March 5th Sunday of Lent	10.00am 10.00am	Benefice Communion Benefice Communion	Alvediston Odstock	Catherine Blundell A-C T-Rosingh/J Taylor
5 April PALM SUNDAY	9.30am 9.30am 11.00am 11.00am 11.00am 11.00am 11.00am 6.00pm	Parish Communion (CW) Parish Communion (CW) Family Communion (CW) + APCM Mattins (BCP) Family Communion (CW) Family Service Morning Service Evensong (BCP)	Britford Broad Chalke Ebbesbourne Wake Berwick St John Coombe Bissett Nunton Bishopstone Homington	Anna-Claar T-Rosingh Jenny Taylor Catherine Blundell Roger Leake Jenny Taylor Adrian Taylor Sally Leaver Anna-Claar T-Rosingh

Ministry Team: Team Rector – The Revd Catherine Blundell: 01722 780134
Team Vicars – The Revd Canon Jenny Taylor: 01722 503081, The Revd Dr Anna-Claar Thomasson-Rosingh: 01722 238267
Curate – The Revd Roger Leake: 07947149456 Licensed Lay Minister – Mr David Blundell: 01722 780134
Team Administrator – Mrs Emily Broomhead: 07890 262376
URC Ministers – The Revds Ana & Tod Goble Dale 01722 330980, The Revd Jackie Lowe: 01722 780008

Assisting Ministers: The Revd Canon Ann Philp: 01722 555178, The Revd Kate Rosslyn Smith: 01722 780011

Lay Worship Leaders: Caroline Lamb: 01722 780789, Sally Leaver: 01722 780447, Don Morgan: 01722 718557, Adrian Taylor: 01722 325862
Biddy Trahair: 01722 780666

If there are any problems with the delivery of STaB please contact Sue Porter on porter1totalserve@gmail.com or 01722 780459.