



Parish Magazine

October 2020



Harvest Decorations in Salisbury Cathedral

Photo by Kate Pendleton

STaB is published by the Parochial Church Council and delivered free of charge to every home in Stratford Tony and Bishopstone. We hope you find it interesting and informative. **Donations towards publication costs are always welcome.**

Donations should be made payable to Bishopstone Parochial Church Council and sent to: The Treasurer, Bishopstone PCC, Ebble Cottage, Mill Lane, Bishopstone, SP5 4BG. Please state on a cover note that it is for STaB.

The views in this magazine are not necessarily those of the PCC.

Editorial Team

Kate & Robert Pendlenton: 01722 780655

Cally Edwards: 01722 780079

Lizzie Williams: 01722 780905

Email: **teamstab2019@gmail.com**

Advertising

Rachael Dew: 01722 780871

E.mail: **ads.stab@gmail.com**

Any articles for inclusion are to be submitted by 5pm on the 20th of the month to appear in the next issue - *unless the magazine is already full.*

The editors reserve the right to edit all contributions.

It was with great sadness that the funeral was held in September of the late
Mrs Beryl Gulliver

We send our deepest condolences to the whole Gulliver family on their loss. They will be remembered in our prayers over the weeks and months to come.

The editorial team would like to offer their grateful thanks to Malcolm Rushan who has recently given a very generous donation towards the publication of this magazine. We are delighted to hear that STaB is providing a valuable service to its readers, particularly during a time when social events are so limited. Thank you so much.

A warm welcome to...

The Douglas Family - Ed, Libby, Zac, Madison and Oscar - who have moved into Whitlock Rise. Also new to Whitlock Rise are Mike and Jackie Day. Welcome all!

A belated welcome to Jamie, Dom, Blake and Adelaide who moved into Stanley Close earlier this year. We hope you will be very happy in Bishopstone.



Hello from the Revd Canon Jenny Taylor



It seems an absolute age since I last wrote – so many changes in Covid related guidance and rules that it has been hard to keep up with them all! The good news is that our churches remain open for both public worship and private prayer ensuring of course, that we follow all the procedures which are in place to keep us all safe – hand sanitising, recording visitors’ contact details and maintaining social distancing. We also lock our church for 48 hours before and after a service to ensure a clean atmosphere.

We are advised that we limit the size of congregations to 30 but we can safely go over this number as long as there is room to safely maintain social distancing. As you know Bishopstone church is blessed with space in the farmer’s aisle and in the chancel as well as the nave, so do feel you can join us at any of our services but especially on Sunday 4th October when we celebrate Harvest! We are as usual collecting tins and packets for the Trussell Trust, who need them more than ever so bring lots with you! If you are unable to join us but still want to give, simply leave your offerings in the porch before Thursday 1st October. And thank you in advance!

Our services are different at the moment – we still cannot sing and we are all in masks but the peace and serenity and the joy can still be felt as we worship God, the Father, the Son and the Holy Spirit; and remember, as Isaiah (41:10) speaks the words of God:

*So do not fear, for I am with you;
do not be dismayed, for I am your God.
I will strengthen you and help you;
I will uphold you with my righteous right hand.*



Chalke Valley Team Ministry - Parish of Bishopstone and Stratford Tony	
Team Rector:	The Revd Catherine Blundell 01722 780134
Team Vicar responsible for Bishopstone and Stratford Tony:	
	The Revd Canon Jenny Taylor 01722 503081
Church Wardens:	George Brutton 01722 718539 Sarah Seal 01722 780305
Lay Pastoral Assistants:	Sally Leaver 01722 780447 Sheila Nell 01722 781120
Team Administrator:	Emily Broomhead 07890 262376
	thechalkevalleychurches@gmail.com

Parish Council

A meeting of Bishopstone Parish Council took place on Thursday 3rd September using Zoom Video Conferencing. Councillors Gibbon, Thorne, Barter, Edwards and Tatner joined the meeting, as did Wiltshire Councillor Jose Green and Roger Stockton, Emergency Planning Officer.

The main issues discussed were:

Covid-19. The Chairman, John Gibbon, said that whilst Bishopstone had been very lucky so far as regards incidence of the Coronavirus it is important not to let our guard slip. There was a serious risk of a second wave this winter as more people returned to work, to schools etc. There were indications of complacency in the wider South Wiltshire community because infection rates locally had been low, with people failing to observe social distancing and face covering rules. However, the situation could change rapidly. It was therefore agreed to retain the emergency support arrangements that were put in place for the lockdown. It was noted that the village owes a huge debt to the volunteers who continue to act as Area Co-ordinators, Prescription Collection Drivers etc. Reminders of the need to keep to the rules would be included in STaB (*see elsewhere in this edition*), on the village website and the WhatsApp Network group.

Children's Play Area. The new Play Trail had been a considerable success and it had been important for it to re-open as soon as this was possible. However, this decision would be kept under review going forward. Time limited funds were available for further spending on recreation facilities and options for additional equipment were considered. It was agreed that the focus should be on provision for slightly older children than the existing Play Trail. It was agreed that the Clerk would circulate proposals for agreement.

Grants to village organisations. Grants were agreed of £450 (PCC), £450 (STaB), £350 (Village Hall) and £250 (Chalke Valley Sports Centre). A request had been received for the Parish Council to provide financial support for a new edition of the Church Guide leaflet for St John the Baptist church. This leaflet, which provides information on the structure and contents of this Grade 1 Listed Building, had proved very popular with both residents and visitors to the village. It was agreed that the Parish Council should itself meet the £435 cost of printing this leaflet.

Superfast Broadband in the village. A report was presented on the work undertaken so far on examining ways of achieving Superfast Broadband availability to properties in the part of the village served by the Broad Chalke exchange. The Chairman said that Superfast Broadband will revolutionise both domestic and commercial communications in the next five years and we should invest in the future. The next step would be a submission to Openreach of proposals for a Community Fibre Partnership. (*A report updating the position on this project is included elsewhere in this STaB*)

Fence in Faulston Lane. It was agreed that the Parish Council would meet the cost of replacing the road side fence where the public bench is located beside the river bridge in Faulston Lane.

The next meeting of the Parish Council is due to be held on **Thursday 12th November at 7.00pm**. Whether that meeting can take place in the normal way in the Village Hall or has to be held remotely by Zoom will be determined nearer to the time.

Coronavirus Update



The number of Covid-19 confirmed cases is now rising significantly and there is little doubt that a second wave of Covid-19 infections is on the way. **It therefore remains more important than ever to make sure we continue to follow Government guidance in order to keep our community safe.** So wash your hands frequently, wear a face covering and maintain social distancing. The elderly and more vulnerable, in particular, should take great care.

The situation is changing rapidly and it is likely that tighter restrictions will be put in place over the next few weeks. Further updates will be posted on the village website (www.bishopstone-salisbury.co.uk). At the time of writing:

Social gathering is limited to groups of 6, both indoors and outdoors and for all ages. Pubs, restaurants, shops and other venues remain open for the present, but people can only attend in groups of up to six. Venues must provide for social distancing between groups. These rules are a legal requirement, which means that groups larger than six can be broken up by the police, with fines of £100 for a first offence, doubling on each further offence up to £3,200.

Face masks must be worn on public transport and in indoor settings (including shops and supermarkets, entertainment venues, places of worship, hair salons etc).

Social distancing should be maintained when meeting others – keep 2m apart or 1m where additional measures to reduce transmission are in place.

It is important to **self-isolate** when required to do so. The Government is introducing £1,000 fines for those who fail to do this. Government advisors are clear that **breaking transmission between households** is key, so the rules on social gathering may well be tightened.

The arrangements put in place by the Parish Council and the Emergency Planning Committee to support members of our community will remain in operation. If you need help please contact your Area Co-ordinator (contact phone numbers listed at the back of this STaB). The prescription collection service will continue for the foreseeable future.

It is vital that everyone continues to take this matter seriously. Bishopstone village has a large number of elderly and more vulnerable residents. Please help to ensure that you keep yourself, and them, safe.

Village Hall



October 2020

NOW OPEN FOR BOOKINGS

Building works have progressed over the summer break and the memorial hall now benefits from new windows making it a much brighter space. Both halls are available for hire for permitted activities, subject to the acceptance of the “Special Conditions of Hire during Covid-19” which are available from the bookings secretary and the village website.

In preparation for reopening, the hall has been professionally cleaned and prepared with clear new instructions for all users. These include the wearing of masks, hand sanitising stations and maintaining social distancing.

BISHOPSTONE COMMUNITY CAFE

These informal events have successfully resumed, being held on alternate Thursdays. Weather permitting there will be an option to sit outside.

The next café mornings will be on Thursday 1st, 15th and 29th October. Open from 10.30am until 12.00noon. Everyone welcome to look in for a coffee and chat. There is no charge but voluntary donations are appreciated.

RURAL ARTS

It is hoped to restart Rural Arts Events next year. Unfortunately, the children’s event “**The Bird Show**”, originally planned for April, has now been cancelled.

BISHOPSTONE COMMUNITY LUNCHES

Unfortunately the ever popular Community Lunches continue to be on hold, largely because the need for social distancing severely impedes the social aspect which is equally as important as the food!

The situation will be reviewed next month to see if a Christmas Lunch can be managed.

BABY AND TODDLER PLAYGROUP

For general information about the Baby and Toddler Group find their Facebook page *Bishopstone Playgroup*, or contact Kate Pendleton on 01722 780655 or email : kmpendleton@hotmail.com . Sadly the group remains closed until children are no longer expected to remain socially distanced.

MOVIOLA at Bishopstone

The new season opens this month:

Friday 30th October “The Personal History of David Copperfield”

A great film to start the new season, this is a whimsical account of the life of David Copperfield from childhood to maturity, with his own adventures and the web of friends and enemies he meets along his way. It stars Dev Patel, Hugh Laurie, Tilda Swinton, Ben Wishaw and Peter Capaldi.

Friday 27th November “Harriet”

Tickets for all films cost £6.

Pre-booking is essential and we would like payment in advance to avoid queueing at the door. Please phone Caroline Ash on 01722 781044 to book and for details of how to pay. (On-line payment is preferred but cheques are acceptable and we will have a card payment device at the door. No loose cash please.)

Only the main feature will be shown and the evenings will take place under the current government “safe practice” guidelines. This means you will need to wear a face covering (though this may be removed once seated whilst eating or drinking). There will be no bar or snack sales but guests are welcome to bring their own refreshments.

Doors open at 7.15pm for a 7.30pm showing.

“EXTEND” EXERCISE CLASSES

For information about these exercise classes contact Jenny on 01722 780863, email: jennyberwynjones@yahoo.co.uk

PILATES AT BISHOPSTONE

Classes have now restarted. Contact Claudine on 07788 587937.

YOGA WITH HANNAH

Classes have resumed and run every Thursday 6-7pm and 7:30-8:30pm

For more details and to confirm a place contact Hannah Stocker on 0773 856 1888 or by email: yoga_with_hannah@outlook.com.

VILLAGE HALL COFFEE MORNING

On 17th September the village hall held its first Community Coffee Morning for many months and we would like to thank everyone who came along and joined us. It was a beautiful sunny morning so we arranged the tables and chairs outside (observing social distancing rules of course) and had a great time catching up on all the village gossip. These coffee mornings are held on alternate Thursday mornings starting at 10.30am, so the next one will be on 1st October. We cannot guarantee sunshine every time but we can guarantee good company (and the coffee and biscuits aren't bad either). PS. It's free!!

Francis & Sue Taylor

A Plea from the Village Hall Trustees

In the last edition of STAB we posted a plea for volunteers to help the current team of trustees run future events in the village hall. As we pointed out, most of the trustees are over 70 and are therefore in the "vulnerable" category, and some now wish to draw back from organising events. We were delighted to receive a response from someone who is willing to help, especially as they are from a much younger generation, but we would love to receive more offers. The current situation means that many of our activities are on hold, but we hope to return to a full programme when life becomes more normal, provided more support comes forward.

If you are interested, please contact Sue & Francis Taylor (frstaylor1@btinternet.com) or any of the trustees, whose phone numbers are in STAB.

Hallowe'en Idea

Hi all. My kids asked me yesterday what will Halloween be like this year.... I explained we probably won't be going trick or treating due to covid but then I've just seen a post on another page with an idea.....Just like we all did with rainbows.... If we paint, draw etc a pumpkin and put in our windows....the kids can go on a pumpkin search and for everyone they find the parents put a sweet in there bags. This can be done throughout half term as well so you Dont have to stick to the 1 night. Just putting it out there to see what everyone else thinks about Halloween this year. 🤔🍂👻👪

As so many people will be feeling uncomfortable about trick-or-treating this year, parents might wish to help their children celebrate in a different way. Here is one idea that is circulating on social media. We suggest that if you would like to put a pumpkin in your window but would *not* like people to knock on your door you put up a 'no trick-or-treaters please' sign too. As ever, do remind your children not to knock on doors where there is no Hallowe'en decoration.

Bishopstone Village Hall rates for private hire

Bishopstone Village Hall has 2 rooms that are available for hire for a wide range of functions. The larger room is ideal for children's parties with lots of space for running around. It can also accommodate wedding receptions, charity functions and large family celebrations.

The smaller room (The Memorial Room) is a good size for meetings and smaller gatherings.

The modern kitchen is spacious and fully equipped with an electric catering range, a professional 4 minute dishwasher, water boiler, hot cupboard, microwave oven, 2 fridges and a freezer, all suitable for professional caterers. There is also glassware, crockery and cutlery for over 80 people.

The hire charges include use of heating and electricity.

The rates are currently:

	Villagers	Non Villagers
Hire of both rooms (With full use of the kitchen)	£15 per hour	£20 per hour
Hire of both rooms (With tea making facilities but no other electrical kitchen equipment)	£10 per hour	£15 per hour
Full use of the kitchen <u>only</u>	£10 per hour	£15 per hour
Weddings – per event/day	£150	£250
Parties – per event/day	£100	£150

Broadband

An additional charge is made for use of the broadband connection of £6 per hour with a maximum of £25 per day.

Large projection screen

Use of this professional quality screen is charged at an additional £10 per event.

The hire period must include time to set up and clear away after the event.

For further information and bookings contact: Margaret Barter 01722 780471

Chalke Valley Community Support

POLICE

Call 999 in an emergency: an emergency is when someone is being threatened or at risk of getting injured, or a crime is in progress.

Call 101 for non-emergencies: such as reporting a crime that has already taken place, non-urgent incident, contacting local officers etc

You can also contact local Police as follows:

PCSO Matthew SMITH – matthew.smith@wiltshire.pnn.police.uk

PCSO Simon WARD - simon.ward@wiltshire.pnn.police.uk

PC James BARRETT - james.barrett@wiltshire.pnn.police.uk

PC Matt HOLLAND – Community Policing Co-Ordinator

CPTSouthWiltshire@wiltshire.pnn.police.uk (*e.mail address for general enquiries*)

Community Messaging – for emailed crime reports and local policing updates, sign up at www.wiltsmessaging.co.uk

Social media – for local policing updates follow us on Facebook

@salisbury police and Twitter **@SouthWiltsCPT**



Sixpenny Handley and Chalke Valley Practice

Doves Meadow Surgery, Broad Chalke: 01722 780282

BROAD CHALKE SURGERY CURRENTLY CLOSED

Despite requests for this information we have no news as to when it will reopen.

Sixpenny Handley Surgery: 01725 552500

www.sixpennydocs.co.uk



STaB draws attention to the support being provided in the village by the Parish Council and the Emergency Planning Committee. But help is also available from Wiltshire Council.

If you are self-isolating due to coronavirus (COVID-19) and you need help you can call the helpline on: 0300 003 4576



STAY HOME STAY SAFE

**For vulnerable people
in need of support call**

0300 003 4576

#WiltshireTogether



Wiltshire Council

Sixpenny Handley & Chalke Valley Practice Flu Clinics 2020

DRIVE-THRU at Broad Chalke Primary School car park

Saturdays 3rd, 10th & 17th October – all day

The main flu clinics this year for the Sixpenny Handley and Chalke Valley Practice will be held as drive-thru sessions in the car park at Broad Chalke Primary School. **All clinics are by appointment only. If it is not possible for you to attend a drive-thru clinic their Flu team will help you book an appointment at an alternative venue.** Please note their District Nursing team will be arranging vaccination of their patients in the community.

Please book by ringing the flu team on 01725 553222 between 1-2pm Monday to Friday. One person from each vehicle to book the appointments.

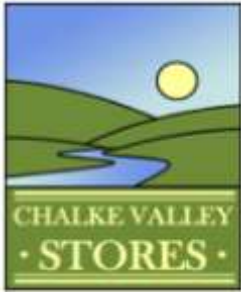
Vaccination is available to people over 65, those with certain chronic medical conditions and frontline health and social care workers. Only patients registered with the surgery can be vaccinated. Full details of eligibility for a vaccination are on the Practice website: www.sixpennydocs.co.uk and on the Bishopstone Village website www.bishopstone-salisbury.co.uk.

Drive-Thru Arrangements

The drive-thru arrangements are set out in full on the above websites. The main points are:

- Each car attending a drive-thru clinic can have up to four occupants eligible for the flu vaccine. The driver does not need to be having the flu vaccine and you can be driven to the clinic by someone else such as a relative or friend.
- **Each person in the vehicle wanting a flu vaccine must have an appointment booked.** Where there is more than one occupant in the car their appointments will need to have been booked together. You will need the names and dates of birth of those in your vehicle having the vaccine.
- Everyone will remain in the vehicle throughout your time on the school site.
- Each occupant of the vehicle should wear a face covering unless exempt on medical grounds. Each person having a vaccine should wear a short sleeved top or one with a sleeve pulled up to expose the upper arm just below the shoulder. The window of the car on the side you are sitting must be able to be opened to allow vaccination in your arm that is nearest the window. You might wish to think about where you sit in the car in advance.
- Please do not arrive too early as you are likely to be turned away and asked to return at your appointment time.
- Please try to use a one way system approaching and leaving the school site. Marshals will help direct the traffic. Arriving from High Road, proceed along Newtown and turn left into the school grounds. Your car will then be directed by a marshal to the team who will administer the vaccines. The driver will be asked to stop the vehicle, put the hand brake on, the windows down and then switch the engine off. On leaving the site please turn left on to Newtown and continue along until you meet Bury Lane.

The surgery say: "This is a new system for all of us, designed to deliver the flu vaccine safely. Your patience and co-operation is appreciated".



Shop: Open weekdays 9am - 4pm (9am-2pm on Saturdays)

Coffee Shop: Currently closed.

Post Office: Open Mon, Tues & Thurs 9.30am – 1.30pm:

w: www.chalkevalleystores.co.uk

e: info@chalkevalleystores.co.uk

Tel: 01722-780998

A REMINDER ABOUT OUR HOME DELIVERY SERVICE

Here is what you do to arrange a delivery.

With your order and contact details at the ready:

Ring the HUB shop on 01722-780998. You are likely to speak to one of our team leaders but anyone on duty at the shop can take your order.

or

Email us with your order at: info@chalkevalleystores.co.uk

We will then prepare your order and ring you when it's ready with the cost and to arrange delivery at a convenient time and to a specific drop off location at your house.

POST OFFICE

Whilst the coffee shop sadly remains closed, the shop and Post Office are open.

The Post Office opening hours are:

Monday, Tuesday and Thursday: 9:30am – 1:30pm

Services available include:

- Purchase of stamps etc. Posting of letters/packets. Parcelforce items up to 10kg. Redirection of private/business mail. Post collected @ 1245.
- Vehicle tax. Don't forget to bring your V5/V5/2 and MOT.
- Mobile top-up and vouchers can be issued.
- Acceptance of banking in/out for most high street banks.
- Withdrawals from the Post Office card account. Bank card withdrawals.
- Payment of Utility bills are accepted, such as Wessex Water, British Gas, BT and Council Tax etc.
- We can order foreign currency for next day delivery and buy most currencies on demand. Passport information can also be given.
- Rod licenses available on demand.

Any queries, contact Ed Rigg on 01747 870200

The Trussell Trust

Donations received over the last 2 months were: August 21.8 kgs of foodstuffs plus a cheque for £50 and £20 cash, and for September 12kg. Thank you to all who contributed.

I had a communication from the Trussell Trust just before I wrote this and they are saying that across their network they are expecting to be providing:

“six emergency food parcels every minute this winter, which is a 61% increase on last year. The impact of Covid19 on food banks in the Trussell Trust network also shows that families have been hardest hit, and during the start of the pandemic there was a significant increase in the number of people receiving support from a food bank for the first time. During such difficult times, your support makes all the difference. Because of people like you, we've been able to help food banks provide emergency food to people and work towards a future where everyone has enough money for essentials.”

So, they are more than ever in need of donations to cope with this increase as Autumn turns to winter. Please continue your support

If you would like to know more about everything they are continuing to do please go to their web site www.trusselltrust.org it is absolutely full of interesting information as to what they do and what their aims are. Do please have a look.

At the present time they are asking in particular for:-

Tinned Fruit

Instant Mashed Potato

Tinned Rice

Sponge Pudding

Shower Gel

Sponge Pudding

Long Life Fruit Juices

Shampoo

Deodorant



If you can provide any of these they will be very grateful, but really anything you feel you can offer will be so useful at this time.

If you wish to donate money (cash or cheque) instead of food you can as normal leave it with me to take for you or you can go online and donate directly to the Salisbury Trussell Trust, either a one-off or a regular payment which can also be Gift Aided if you are able.

Recently I had a request from someone as to how they donate clothing at this time. The Trussell Trust are only accepting smaller items such as good quality clothes, shoes, bags, accessories and bric-a-brac. It is necessary to phone for an appointment and only at Bemerton Heath (01722 580188) or Stephenson Road (01722 580196) If you have furniture items to donate please call 01722 580196 or email:- furniture.donations@trusselltrust.org

Please continue to leave your food and hygiene donations at The Old Post Office, The Cross, either ring the doorbell or leave them on the step. If you cannot get them to me then please phone me and I will arrange for someone to collect at your convenience.

Thank you again for everything that you have done over the years and hopefully will continue to do for this very worthwhile cause.

Keep safe and healthy everyone, Judy Barrett (01722 780306)

A Guide to Faster Broadband

WHAT HAPPENED?

- The village had an upgrade to broadband services in 2015/2016. This was from the exchange in Broad Chalke for all 780 and 781 numbers (Western and Central Bishopstone) and from the exchange in Coombe Bissett for 718 numbers (Eastern Bishopstone and the Blandford Road).
- This was known as **Fibre to the Cabinet (FTTC)** and comprises a fibre optic link to the green cabinets (one at the end of Flamstone Street and the other at the junction at Manor Farm) and then copper cabling from there to individual houses or businesses.
- This gave the village **High Speed Broadband**, a much improved service BUT the speed you received was dependent on the distance your house/business was from the green cabinet and the loss in signal (attenuation) that occurred. This meant that some properties now get speeds of 80 Mbs while others struggle at 15 Mbs.

SO WHAT CAN BE DONE?

- The latest system is called **Superfast Broadband** and significantly increases speeds by installing fibre optic cabling from the exchange all the way to individual houses or businesses. This is known as **Fibre to the Property (FTTP)**.
- This system is already available to most of those served by the Coombe Bissett exchange and several properties have signed up to a new service package giving a much faster service.

BUT WHAT ABOUT THE REST OF US?

- Because there was no plan to upgrade the links in the western end of Bishopstone, the village has now signed up to the Community Fibre Partnership programme and you recently received a leaflet from the Parish Council explaining this scheme and inviting you to participate in the first phase of Registering Interest - there is no obligation on your part to go further.
- A total of 71 business and properties joined into this step and have had their interest registered with Openreach.

SO WHAT NOW?

- It is now a case of wait and see. We anticipate a response from Openreach soon and this will confirm whether a new Superfast FTTP for Bishopstone is a possibility. If it is we expect a cost estimate from them. We will be able to claim £1500 per property and £3500 per business. On current reckoning this works out at about £112,000. If there is a funding gap further work will be required to determine whether and how it might be filled.
- We know that there is already Superfast Broadband in Stoke Farthing.

HAVING EXPRESSED INTEREST CAN I OPT OUT IF I AM REQUIRED TO MAKE A CONTRIBUTION?

- Yes - expressing interest is not a commitment to contribute.

HAVING NOT EXPRESSED INTEREST CAN I OPT IN IF I AM NOW INTERESTED.

- Yes but only up to a particular cut-off point as yet to be determined so you need to be quick and contact the Parish Clerk as soon as possible.

WHAT DOES SUPERFAST BROADBAND COST?

- There are various levels. The faster package that you opt for the more it will cost. The lower levels of speed increase are likely to be about the same price as households pay now. An increase in speed to 80Mbps would be about £10.00 more per month. (Examples to follow).

OPENREACH'S LATEST RESPONSE ON 14 SEPTEMBER.

- We're now working on a ballpark cost so during this time your application is 'locked'. You'll hear from us soon with a figure that you can discuss with your community. Once you've done that, please let us know if you want to proceed and we'll work up a full design, showing what speeds each premise would receive.

The Friends of Bishopstone Church

If you would like to help the Friends of Bishopstone Church with their work of preserving the fabric of this beautiful building, please contact the Treasurer Norman Barter (01722 780471).

Due to the Pandemic, it's been decided to postpone the AGM of
The Friends of Bishopstone Church until it is safe to hold it.

Flamstone Street wins Sunday Times Award

The Sunday Times of 6th September carried the amazing news that Flamstone Street, Bishopstone had won their “Best Street of Neighbours” award.

Earlier the newspaper had asked for nominations for community members worthy of their annual Good Neighbour Award. Hester Kirkham of Flamstone Street, wife of the late Bishop John Kirkham, responded to the Sunday Times invitation. She had been impressed by the arrangements that had been put in place across the village to support the elderly and vulnerable with prescription collections, shopping etc during the Coronavirus lockdown, and, in particular, the support she had received from her immediate neighbours in Flamstone Street. This is reflected in the Sunday Times commendation which is reproduced opposite.

The Sunday Times pointed out that *“In a year that has seen Covid-19 bring life as we know it to a standstill, Britain’s community spirit has never been more important. Faced with the biggest crisis in a lifetime, people in towns, cities and villages have been supporting each other like never before.”*

Perhaps unsurprisingly they had a record entry for their awards, recording the many acts of kindness shown by neighbours during the lockdown. They said *“Seeing how people across the UK have supported each other since the outbreak of Covid 19 demonstrates the importance of having neighbours you can rely on in a time of need”*. Of course, this has been demonstrated not just in Flamstone Street, but across the rest of the Bishopstone and, indeed, the country as a whole.

The other residents of Flamstone Street only found out about this award after it had been made. We were told to assemble on the morning of 1st September for socially-distanced photographs to be taken (see also inside back cover of this STaB). Telephone interviews were conducted by the journalist Shingi Mararike. The photography session turned into something of a, socially-distanced, event in itself!

The article says *“Even now, as life returns to something like normality, many of the ideas born during the pandemic have continued. Perhaps one of the only bright spots in a bleak year is the reminder that good neighbours are not just for lockdown, but for life”*. Hester Kirkham was herself the embodiment of this principle. When Caroline and I moved to the village in 2008 Hester was our first visitor when she knocked on our door with a cake to welcome us to the village!

After 20 years living in Flamstone Street, Hester has now moved back to her native USA. All of her friends and neighbours were very sorry to see her go. She and John both made a considerable contribution to life in the village, and further afield, and she will be sorely missed. Her neighbours presented her with a commemorative book of photographs taken over the years and, of course, wished her well for the future with a final, socially distanced, glass or two!

Mike Ash

◀ Best street of neighbours award Flamstone Street, Bishopstone, Wiltshire

When Hester Kirkham and her husband, John, moved into a house backing on to a river in the tiny Wiltshire village of Bishopstone, the first thing that struck the couple was the generosity of their neighbours.

Within hours of arriving at their new address in Flamstone Street they were inundated with warm words of greeting, flowers, cakes and biscuits.

In the 20 years since, many things have changed — neighbours have come and gone, they added a handsome front porch to the house and filled in the old swimming pool. One thing has stayed the same, though: the kindness of those around them.

Since John's death from colon cancer last year, Hester, 87, front, was left living alone, with no relatives in Britain.

Almost at once Flamstone Street mobilised, with the accountants, firemen, young families and retired couples she lives among becoming her extended family. This support system has seen her through the grieving process, as well as self-isolating during lockdown.

As a parting gift before she moves back to North Carolina

next week to be closer to her four children in the US, Kirkham nominated them as the best street of neighbours in the country — an award that they have deservedly won.

"I get very emotional just talking about it. This is not just the best street in Britain, it is the best street in the entire world, they deserve this award so much," she says.

"I got every bit of support you can imagine: repeat prescriptions, mail, groceries, cooked food and people calling to do errands, I didn't have to leave the house."

In one act of kindness earlier this year that left Kirkham in tears, the local handyman turned up on her doorstep "with a duffle bag and a long ladder" to change all the lightbulbs after he had noticed some rooms were pitch black.

Her neighbours also installed a panic button in her home, in case she had any falls or emergencies, and assisted with moving the hundreds of items her husband had amassed over the years as Bishop of Sherborne, including selling his old Volkswagen.

The story of Flamstone Street isn't just one that revolves around helping one person, though. Like many local communities across the country, they have found innovative ways to support one another while keeping 6ft

apart during the pandemic, including setting up their own mini-economy known as the Flamstone Street Exchange. It is a list of emails and numbers aimed at making it easier for people to request items they need, from bread to lemons to four-inch nails. Long after lockdown measures have lifted, the exchange is still being used.

"It was a relaxed way of trying to help people, said Anne Stuchberry, 72, who came up with the idea.

"If somebody wanted a loaf of bread or they needed some milk, they would just phone somebody on the list, it worked really well."

Flamstone Street residents have also bonded through their shared love of festivities and a glass of wine or two, organising a series of socially distanced celebrations, including VE day, Easter and an American independence day party for Kirkham.

For Amber Cotton, the street's Covid co-ordinator in charge of assisting older residents, their formula for becoming Britain's friendliest neighbourhood has been a simple one.

"I think the key here and in thousands of other villages is the effort we made to make sure people have been able to have company," she says.

"It's about making sure people aren't left behind."



70th Wedding Anniversary Celebration!

Rozalie and Colin Everett of 9 The Croft celebrated their 70th Wedding Anniversary on September 2nd 2020 with a small family get-together at home.

Rozalie lived at Flamstone Farm with her sister Gertie and brother-in-law Donald Thorne.

The ceremony in 1950 was the first marriage to take place at The Methodist Chapel in Bishopstone which although built in 1833 had not been licensed for marriages.

The wedding took place at the unusual time of 9am, this being the only time that the registrar could attend.

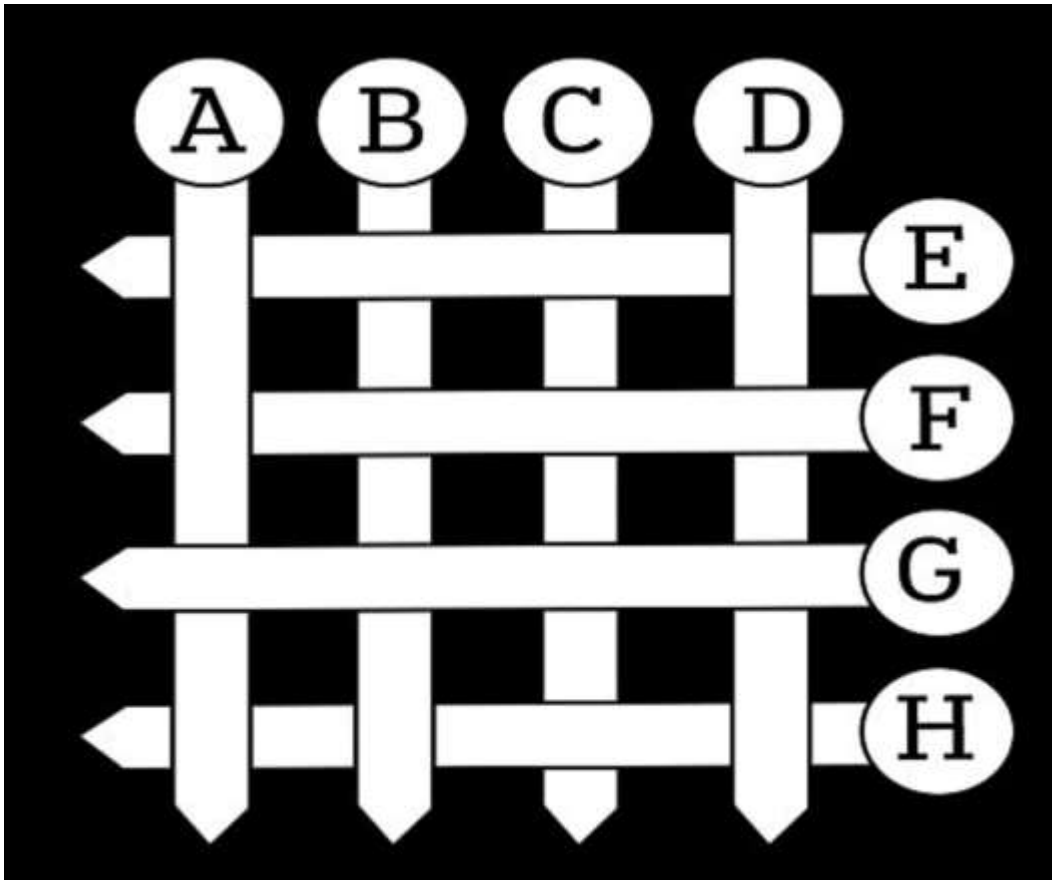
Rozalie's teenage sister Olive (now Olive Moody) played the organ, and after the ceremony a reception was held at Flamstone Farm House.

On the 2nd September 2020 they were pleased to receive a congratulatory greeting card from Her Majesty Queen Elizabeth II, and also one showing 'before and after' photographs.



Puzzles and Activities

Take off the sticks one at a time so that you are always taking the top one off the pile. In what order do you take them off?



Luke: Do you know, when the Smiths married eighteen years ago, Mr Smith was three times as old as his wife and today he is just twice as old as she is?
 Susie: Then how old was Mrs Smith on their wedding day?

Complete each set of three words by using the same three-letter word inserted into each group

G ___ ANT SQU ___ Y REC ___
 CA ___ AL JU ___ ER DES ___ E
 OC ___ US ISO ___ E AU ___ SY
 MO ___ TUM COM ___ T PI ___ TO
 AE ___ IC MIC ___ E P ___ LEM

Answers on page 52.

More Rambling...

The weather has now broken in mid-August, and like the evening monsoon in the Tropics, we have been refreshed by all this rain. Our lawn now has a nice green tinge, so all is not lost! The courgettes are coming along very well, as are the beans. The peas are nearly over, exhausted by the heat, I think! The Russet apples are bulging well too.

Anyway, as we continue in a sort of siege state, we have been out for shopping and even walking and seeing friends around the Village. The church is now open, and services are held on two Sundays a month. The online services every Sunday hosted by Jenny or Catherine are well supported every week. Thanks to them and the Benefice Team for providing such comfort in these difficult times. These online systems mean a great deal to those who are entirely housebound.



We have resumed our Friday PM Guiding in the Cathedral, as it is now open every day. Visitor numbers are increasing, and it is wonderful to meet so many families and the foreign visitors. Many have come far to see the Cathedral, as a sort of stay-at-home holiday. The painting is rather sad, as the notice says: 'NO RE-ENTRY', in an empty east cloister. Normally, at 4.00 pm, it would be full of families and visitors waiting to see Magna Carta, or the other conveniences!

The empty East Cloister.

Summer is well and truly with us, as we have had the boiler serviced, but my latest brew is a failure. It is all very acid and had to be put on the compost heap! The hospital is working overtime, as I was called to have a scan on a Sunday! They are working well and trying hard to catch up. What a year this has been for them. I am sure we all thank them for their hard work and are thankful that SDH is so near.

We remembered the 75th anniversary of VJ Day in the church on 15th August, with a short wreath-laying ceremony. Thanks to all who came and there is a separate article on this.

Not much walking or rambling, while we still search for the right dog to replace Zinnie! Keep well, wear a mask in crowds and enjoy the fresh air for free in our beautiful Valley.

Let's just sit back and enjoy the apples and the damsons!

James Thompson

VJ Day 75th Anniversary Wreath Laying



A small gathering occurred on Saturday 15th August to remember VJ Day in 1945, being the 75th anniversary of this great day when the Second World War finally ended. A special wreath was laid at our War Memorial in the church, before nine villagers, and after a short prayer the Kohima Epitaph was repeated:

“When you go home, tell them of us and say: For your tomorrow, we gave our today.”

After a moment of silence, we left remembering an event long ago which must never be forgotten. We remembered an old friend, Gp Capt Alex Blythe, who had flown in support of this operation in 1944.

The Kohima Epitaph is inscribed on the 2nd Infantry Division memorial in the Commonwealth War Graves Commission cemetery at Kohima, based around the tennis court which provided the final perimeter for the defence. It was here in April to June 1944 that the Japanese assault on India was stopped, with the loss of 4,000 British fallen, and 7,000 Japanese casualties.

The epitaph is taken from the Greek poet Simonides of Creos, who wrote of the Spartan dead after the battle of Thermopylae (480 BC). This modern edition was written by Major John Etry-Leal, a classicist and a staff officer in 2 Inf Div.

It was privilege to lay this wreath and to have such support from the village.

Major (R) James Thompson MBE



Still Rambling... sometimes!

Well today, 19th September, I finally went for a ramble in the village with Jo. We gathered nearly 2 kg of bullace and about 1.5 kg of blackberries, much to poor Annie's dismay! She now had the task of cooking them into jams and jellies! However, we did miss the company of our Zinnie. She loved blackberries and her black nose in the bag was sorely absent. Shame!

Otherwise, the last two months have seen quite a change in the village, as we went from real freedom and easy access to the pub and services in the church, to the present restriction to a 'group of six'. We just hope that dear Boris has a grip on the problem, and that we might get through it safely together.

All the sunshine and heat has been a great boon, and so has the garden. Our beans are now over, but the carrots, and beetroot and leeks are doing very well. That, and the free bounty in the hedgerows should make for a good harvest festival! The flowers are going over now, but we still enjoy the lonely roses and the dahlias, and of course the zinnias. I think we have all enjoyed a good season in the garden, but we at No 5 are still miles away from showing ours to the public! It is a family suburban garden and still needs a lot more work, even after 23 years in it!!

I have been busy watercolour painting, and for the last three weeks also repairing, rebuilding and reupholstering chairs. The garage is now a workshop (the girls call it my DT LAB) and has been a good place to do this work. It has been energetic (getting all those tacks and staples out) and rewarding in the final achievement. Here are some photos of 'before' and 'after' with our chairs:



An armchair



a dining chair!

Not bad .. Eh?

I hope everyone has had a good summer, with few troubles, and in good health. We must now get through the next few months with equanimity and strength, and beat this wretched Covid 19 flu. I am sure we can!

Good luck to all and thanks for your patience!

Whose house is in the painting? *James T*





REMEMBRANCE IN 2020

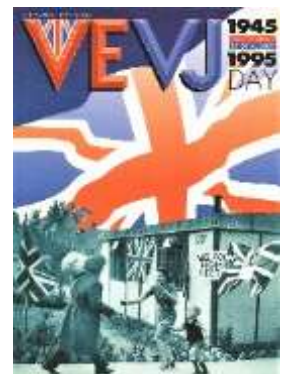
The restrictions on our movement and association caused by the Covid 19 virus have meant a change to Remembrance Sunday this year. We did manage both VE and VJ Day, but with reduced support.

A Service of Remembrance will be held in our church at 1100 hrs am on Sunday 8th November, with our own Rev Jenny leading the shortened service. At the moment, there will be no singing, but there will be organ music, and attendance in church will be limited to ensure 'social distance'. More details will appear in November issue of STAB and on the village website.

This is an important year for military and naval remembrance, being the 80th anniversary of the Battle of Britain, and the 75th anniversary of the end of the Second World War, with VE and VJ Days already remembered in our church. We will remember especially all those who served and died in the Second World War in every service, and those in the supporting civilian services on the land and at sea, and in the mines.

Do come to support this service and we will adapt attendance on the day as people arrive. It may be necessary for some to remain outside the church, so dress warmly! We will not be able to hold a curry lunch in the White Hart afterwards, because of restrictions in space available, despite all the best efforts of Tom and Zara to provide areas under cover.

It is unlikely that a door-to-door collection for the RBL Poppy Appeal will be possible this year, according to advice from the RBL. However, collection boxes will be available in the pub and in the church and the village hall. We will try to collect personally, but whatever ensues, all donations will be gratefully received.



WE WILL REMEMBER THEM

James Thompson

20.09.20

Meteorites - or not!



Inspired by Harry Williams' recent garden find (featured in the July edition of STaB) and James Thompson's subsequent mention of collecting 'meteorites' (in STaB Aug/Sept) my sons and I spent many happy hours during lockdown searching the edges of our local fields. It didn't take us long to fill our pockets with these little chunks of metal, and we brought them home to clean them up and marvel at the variety of different shapes. Many were obviously originally spherical but have shattered into sections. We particularly

like the cylindrical ones too. On investigation we have discovered that these are not meteorites, as they are commonly called, but iron sulfide nodules (marcasite or pyrite) which occur naturally in chalky soil.

Kate Pendleton



Chalke Valley Playschool - Reopened and Covid-Secure

The Children and Staff are delighted to be back open at Chalke Valley Playschool, which offers a nursery setting for children 12 months and up as well as wrap-around care for Broad Chalke School. New procedures include a 2 hourly cleaning schedule and greeting each individual child at the door, along with the usual hand-washing and sanitising. Toys have been modified and things like dressing up clothes are rotated. Manager Juliet Pearce says 'Once we got our heads around the Government Advice it was just a case of putting new procedures and training in place and we are now confident that we are doing everything we can to keep the children, staff and parents safe. What is particularly great is that the children have adapted beautifully. We are inspired by Forest School, Reggio Emilia and Montessori pedagogy so lots of outdoor play is always part of our day; we try to be outside as much as possible'. The nursery is also introducing short 2h socialisation sessions for any children 12m- 3yo who are missing the interaction of other children at playgroups. Please see our website for details: www.chalkevalleyplayschool.co.uk or to book a weekend tour.

Nature Notes - Stag Beetles

In exciting news for entomologists and wildlife enthusiasts, a female Stag Beetle was spotted earlier this Summer in Mill Lane by Sarah Hicks.

Stag Beetles are classed as nationally scarce. They spend most of their lives as larvae underground for a period of 3-7 years, before building a cocoon and pupating, metamorphosing into an adult beetle. These adults only emerge for a few weeks every summer to find a mate and reproduce.



It is only the male beetles that have the huge 'antlers', used in courtship displays, while the females have much smaller mandibles, and are often seen on the ground looking for somewhere to lay their eggs.

Adult Stag Beetles can't actually eat solid food, relying instead on the fat reserves built up as larvae. They can however use their tongues to suck up sap and juice from fallen soft fruit.

Males can sometimes be seen flying round at dusk looking for a mate. Once the beetles have mated the female will return to the spot where she emerged from her cocoon to lay her eggs in rotting wood.

If you spot a Stag Beetle please record your sighting on the ptes website (People's Trust for Endangered Species) at <https://ptes.org/get-involved/surveys/garden/great-stag-hunt/stag-hunt-survey/>

Kate Pendleton

CATCH
Creative

A VIBRANT PERFORMING ARTS COMPANY
DELIVERING INSPIRING, INCLUSIVE AND
CREATIVE CLASSES.

.....
CLASSES held in Salisbury, Wilton and Broad Chalke by an experienced and qualified teacher in a covid secure environment.

Ballet, Street Dance,
Musical Theatre and
Drama, for ages 2-11

Email now for a trial class - info@catchperform.com
catchcreativesalisbury.com

After 6 months of not seeing my students in person and running all classes via zoom, I am very excited to be entering the dance space again with students old and new!

Obviously, the classes are going to be a bit different (hand washing, social distancing, small classes etc) but I promise to still engage and inspire with well structured and creative lessons.

I love teaching dance, it's my passion, and I want to share that love with all my students, whatever their experience or abilities.

If think your child would be interested in any of our classes please just drop me an email.

Hope to hear from you soon,

Emma Newman director of Catch Creative
BBO, NATD, CERT (ED), QTLS

Bishopstone

Tenders Deadline. —

Tomorrow (Friday) is the last day for anyone interested in running Bishopstone Post Office to submit their tenders to the Head Postmaster in Salisbury. Keith and Sandra Parker, who have been running the business since July, 1982, have decided to give up their present responsibilities at the end of January, 1984.

The Parkers originally took on the running of the Post Office because Keith could run his electrical repairs business from the same premises. However, after a successful radio project, his skills as an electronic designer are in such great demand that he no longer has the time to devote to the shop.

Drama Production. — At the Village Hall tonight (Thursday) Cue One opens with a production of Keith Dewhurst's "Candleford." The lead part will be played by Emily Webb, 12, who also played the role in the "Lark Rise" production in 1981.

There was last-minute drama when someone dropped out of the production but Harry Hodgkinson from Coombe Bissett came to the rescue by stepping in at very short notice. The production runs until Saturday.

Help Wanted. — Ruby Thorne is looking for more people to help with flower arranging in church. In particular, she needs someone to decorate two window sills in the Farmers' Aisle

for festivals. Anyone wishing to join the rota should get in touch with Ruby at Manor Farm.

Help Wanted. — STAB, the parish magazine, is shortly going to lose one of its invaluable volunteer typists when Sandra Coleridge leaves the village. The magazine usually comes out once a month and anyone wishing to help with the typing of stencils for duplication should get in touch with Jill Mildred, the Editor of STAB.

Thanks to Sally Leaver for finding this newspaper clipping about Bishopstone news in the early 1980s.

Recipe of the Month - Blackberry Cordial

Ingredients: Blackberries and granulated sugar

Weight the washed fruit and place in a large saucepan, adding 100ml of water per kg of fruit. Bring slowly to the boil, crushing the fruit with a spoon or potato masher. Cook gently until the fruit is soft. Remove from the heat.

Scald a jelly-bag or fine tea towel, pour the fruit into it and suspend over a large bowl. Leave it to drip overnight.

Measure the resulting juice and pour into a clean pan. For every litre of juice add 700g of sugar. Heat the mixture gently to dissolve the sugar then remove from the heat.

Pour immediately into warm sterilised bottles, leaving a 1cm gap at the top. Seal with a screw top or cork. They will keep for a few months if sealed when hot and stored in a cool place.

Kate Pendleton

Sarah's Gardening Tips

1. Gather leaves in a chicken wire cage to rot down into leaf-mould, which is a great soil conditioner.
2. Clear out ponds and stop leaves falling in by netting them.
3. Prune late-flowering climbing roses after they finish flowering.
4. Lift dahlias after the frost has blackened the leaves, Store in a cool frost free greenhouse. If leaving in the ground, cover with a layer of mulch.
5. Leave flowers on hydrangeas to provide winter protection.
6. Wrap up tree ferns to insulate and protect crown from getting wet.
7. Plant garlic this month for harvest next year.
8. Harvest and store root vegetables like carrots, parsnips and beetroot.

It is curious how deeply seated in the human heart is the liking for gardens and gardening.

Alexander Smith



Question: The first begonia was discovered in which South American country in 1690 by Charles Plumier, a Franciscan monk? (Answer on p48)

Sarah's Garden Services: 07971 909 548

Email: mygardenservices@outlook.com

Follow us on Facebook and Instagram @sarahsgardenservices



Take Away Menu
Have you had
yours yet?

Available Tuesday – Saturday
6pm -9pm

White Hart Southern Fried Chicken
Strips served with Coleslaw & Fries
- £8.75

Chicken Tikka Masala Curry or Root
Vegetable Tikka Curry served with
Basmati Rice & Naan Bread or
Poppadom - £8.25

Beer Battered Fish & Chunky Chips
– **Homemade Tartar Sauce £8.50**

6oz Beef Burger & Fries - £8.25
(Additional Toppings 50p each –
Cheddar, Bacon, Stilton, Scorchers &
Jalapenos, Guinness BBQ)

Thai Vegan Burger & Fries - £8.25

7oz Chicken Breast, Lettuce & Mayo
Burger & Fries - £8.75
(Breaded or Plain)

Steak & Guinness Pie served with
Chips, Peas & Gravy- £9.95

Foot Long Bratwurst in a toasted
Baguette with Fried Onion,
Homemade Curry Sauce & Fries
£8.50

Sunday Roast served with
Seasonal Vegetables, Roast
Potatoes, Yorkshire Pudding &
Gravy

Beef £12.25, Lamb £12.95,
Chicken £11.95, Pork £11.95
Sunday Only 12pm – 2.30pm

Homemade 12”
Rustic Thin Crust
Pizza

——
Indian Pizza
£13.95

Margherita
£9.95

Vegetarian
£11.95

Pepperoni
£12.95

Black & Blue
£12.95

BBQ Meat Feast
£13.95

Seafood £13.95

The White Hart,
Bishopstone

01722 780244

follow us on Facebook and
Instagram for weekly specials



Request from the Editorial Team:

If you use any of the services advertised here in STaB please do let them know that you found them/their details here in the magazine. This helps them to know that their advertising is working, and helps us to continue to receive revenue from advertising fees. And in this difficult time, please do try to support small businesses.

Also, if you know of any local businesses that might be interested in advertising with us, please do pass on our details to them.

Many thanks!



**SAUL
MITCHELL**
INTERIOR DESIGN

Tel:01747820682

Mob: 07787927455

www.saulmitchell.co.uk

admin@saulmitchell.co.uk



 **07340 501 297**

 **contact@cardinalcomputing.co.uk**

 **www.cardinalcomputing.co.uk**

FAST, FRIENDLY & RELIABLE

NO FIX / NO FEE

10+ YEARS EXPERIENCE

IN-HOME, PICK-UPS & RETURNS

**Technology problems
getting you down?**

We'll get you set up again



EBBLESIDE BUILDING LTD

Extensions – Property restoration – Groundworks
Bricklaying – Carpentry – Roofing – Plastering – Tiling
Traditional lime works – listed building works – Kitchens –
Bathrooms

All aspects of building work carried out

Tel: Russell **07463780938**, Campbell **07976438752**

Email: campbell.mcculloch@tiscali.co.uk, russfoss19@aol.com,

Registered in England & Wales No: 11291245

Vat reg no 308159701

Registered office: Ebbleside, Stratford Tony, Salisbury, Wilts, SP5 4AT

BREAD
FLOWERS
AT HOME

FRESHLY COOKED TAKEAWAY DISHES

DESIGNED TO BE A WEEKEND TREAT

Bread & Flowers brings you delicious flavours to relish & inspire.
Dishes are cooked & prepared to order by our team at our HQ,
ready to be collected by you and reheated at home.

OUR FRIDAY MENU FEATURES:

- mezze / starters
- main courses
- side dishes
- puddings
- food for entertaining

enquiries@breadandflowers.co.uk

01722 326581

Bread and Flowers

Longford Farmhouse

Bodenham, Salisbury, SP5 4EL

Order online for collection
on Fridays 2pm-6pm

breadandflowersathome.co.uk

Returning online shopping?

Simply bring your item to Coombe Bissett Stores and Post Office and we will do the rest. Do you have a code to scan? We do that too! We accept any size or shape of parcel (the largest so far was a bicycle) and we open every day including Sunday mornings.



Please note that only Post Office / Royal Mail codes can be processed here, not MyHermes or Collect+.

Coombe Bissett Stores • Homington Road • Coombe Bissett • SP5 4LR • 01722 718852



Shop and Post Office hours
Monday to Friday 7.00 am – 6.30 pm Saturday 7.00 am – 1.00 pm
Sunday 8.00 am – 11.30 am
Closed Bank Holiday Mondays



For all your pest issues, Local, fully insured, fully qualified BPCA Member
Wasps, Rats, Mice, Cluster fly, Clothes Moth, Fleas, Squirrels, Bed bugs
Call now- **07711 259749** Email- **info@wiltshirepestservices.co.uk**



TATNER and CO

TRADITIONAL AND MODERN UPHOLSTERY

Our bespoke upholstery services include:

Dining Room Chairs	Roman Blinds	Campervan seating and Rock and Roll beds
Arm Chairs (including Parker Knoll)	Curtains	Classic car seating
Outdoor/garden seating cushions	Scatter cushions	Caravan and motorhome seating
Bench seating (kitchen, bar and restaurant)	Box Cushions	Ottomans and storage boxes
Footstools (including made to measure stools)	Headboards	

Contact Michelle Tatner on :

MOBILE : 07968 842525

Facebook : Tatner and Co

EMAIL: tatnerandco@gmail.com



Instagram: tatner_and_co

Jennie Gilbert - Pottery



I make Stoneware pots for the home. Perfect presents for you or your friends. You're very welcome to come and visit the workshop. I also run 2 day pottery courses, please call or email for details.

4 St. Martin's Workshops
Manor Farm
Fifield Bavant
Broad Chalke
Salisbury
SP5 5HT

01722 780402
www.jenniegilbert.com
jennie.gilbert@yahoo.co.uk

Robin Higdon

Your local garage

Car repair, maintenance and pre-MOT preparation for all makes of car.

The Unit, Croucheston Farm, Bishopstone.
Phone: 01722 780606



- ➔ Family
- ➔ Employment
- ➔ Property
- ➔ Litigation & Disputes
- ➔ Commercial
- ➔ Wills & Probate

St Mary's Chambers, 51 New Street, Salisbury, Wiltshire SP1 2PH
t 01722 410664 e mail@sampsoncoward.co.uk
www.sampsoncoward.co.uk

evolve



TREE SERVICES

call Stuart Larter for a free quote

07563 645043
01747 871753



Tree Specialist,
Fully Qualified and Insured

www.evolveetree.co.uk

FISH & CHIP VAN

EVERY WEDNESDAY

COOMBE BISSETT STORES

5PM - 8PM

EVERY THURSDAY

CHALKE VALLEY SPORTS CENTRE

KNIGHTON RD, BROADCHALKE

4.30PM - 6PM

&

OUTSIDE 'DINTON PANTRY'

HINDON RD, DINTON

6.45PM - 8PM

OUR CURRENT MENU OFFERS CHIP SHOP CLASSICS INCLUDING SKINLESS BONELESS COD FILLET, SCAMPI, FISHCAKES, BATTERED SAUSAGES & BURGERS PLUS TRIMMINGS INCLUDING OUR OWN 'HOMEMADE' TARTARE SAUCE.

TELEPHONE ORDERS ACCEPTED DURING OPENING HOURS BY PHONING 07714438356

FOR MORE INFORMATION & FULL MENU PLEASE VISIT WWW.FRYINGTUCK.CO.UK

PA CARE DIRECTORY



CARE AND HOME HELP

The PA care directory have spaces for new clients a free to use service matching a carer to your needs.



CALL US TODAY ON 07557417563 FOR YOUR OWN PERSONALISED TAILORED HELP IN YOUR OWN HOME.

EMAIL HSPRAGG83@YAHOO.COM
OR CALL FOR HELP.



Picture Framing

We will frame: Photographs
Paintings, Prints, 3D objects e.g.
Sports Shirts, Memorabilia and
much more..

Call to visit our Coombe Bissett workshop:

01722 718695 or 07747 017221

Email: info@spireframing.co.uk

www.spireframing.co.uk

Be Inspired!

METAL ARTWORK

BLACKSMITHS & GENERAL ENGINEERS

01722 781212

www.metal-artwork.co.uk



Pregnant?

Looking for evidenced-based childbirth education?
Considering having an extra birth partner?

A doula can...

- Stay with you throughout labour and birth to help you achieve your specific choices
- Offer 1:1 breastfeeding and general feeding support
- Provide help at home for those first few days and weeks after birth

Doula Cally Edwards offers emotional and physical support to help you truly enjoy your pregnancy, birth and early days with your new baby



www.callyedwards.com



@doulacallyedwards



THATCHING BY BRAD YOUNG

WWW.MASTER-THATCHER.COM

CRAFTSMAN IN WHEAT STRAW & WATER REED

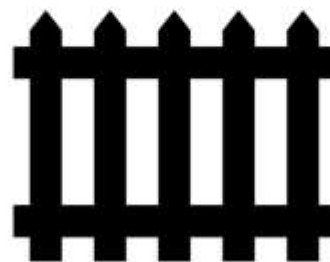
MERRILEAS, NORTH ST
BROADCHALKE, SP5 5EN

07717887743

BRAD@MASTER-THATCHER.COM



Ebble Fencing



- Bespoke Fences and Gates
- Professional Service
- 20+ Years Experience
- Fully Insured
- Free Quotations

07789 707959

www.ebblefencing.com

Pod & Pip

Workshop Open

Thursdays and Fridays 10-4pm

Saturday 930-1230

Fresh Flowers, Plants, Cards, Candles & Gifts

Pre-ordered bouquets for local
delivery/collection

Flower Workshops, Wedding & Event Flowers

Ebble House, Stratford Tony

Kevin Knight

Clock & Watch Repairs

Free estimates given

Over 30 years experience

Tel 01722 331969

Mob 07900 928451

Email:

kevindavidknight@gmail.com

HIGHSPEC WINDOW CLEANING

Other Cleaning Services Include:

- Gutters
- Fascias
- Driveways
- Patios
- Conservatories
- Walls
- Greenhouses
- Cladding
- Solar Panels
- Paths

T: 01425 650894

M: 07554 092670

www.hs-cleaning.co.uk

Tim Saunders Plumbing & Tiling Services

Complete Kitchens, Bathrooms & Wet rooms
Tanks, Cylinders, Pumps, Valves & Radiators
Taps, Basins, & Toilets

Unvented hot water system installation, repair
& servicing (G3 certificated)

Stuart Turner approved installer

Disabled/assisted living zero vat
installations/conversions

Wall & floor tiling

Free advice and estimates

Emergency repairs. No call out fees

Fully insured

07772 610190

Email: timsaundersps@gmail.com

Comfortable and cosy self-contained accommodation.

Little Bridge Studio

Bishopstone

Sleeps 3 plus cot.

Large open planned living space with wood burning stove.

Shower room and separate bathroom.

Contact: Alice Lyons - 01722 781137 or 07811455756

Matthew Veale

Mobile Hairdresser Available 6 days per week

Reliable friendly service London Toni & Guy trained

Please call 01722 336821 or 07788 686829



Bespoke grooming within the heart of
the Chalke Valley
Annie on 07850 508680

Charlotte Steel, VTCT, IIHHT Complementary Therapist

The Chapel, Bowerchalke, 01722 780107 mob: 07811 944328

Email: cjsteel92@gmail.com

Hot Stone Massage: Full body (90 mins) £60

Back, neck & shoulders (1hr) £47

Aromatherapy Massage: Full body (90 mins) £53

Back, neck & shoulders (1hr) £40

Reflexology: Initial consultation (1hr) £33

Further treatments (50 min) £30

Plus 30 minute face/head massage £47.50

Facial: Including, back, arm & head massage (75 mins) £57.50

For a further £14 massage appointments can be extended by 30 minutes to include extra work on problem areas or a relaxing head & face massage

Gift Vouchers Available

NEW Garage (Harnham) Ltd

01722 321 330

Salisbury Original Car Care Clinic
Vehicle wide diagnostics, whatever
the problem, we have the solution

- ◆ All Auto electrical work undertaken.
- ◆ Class 3, 4 & 7 MOTs with Class 1 and 2 available on request.
- ◆ Air conditioning services carried out.
- ◆ Lease work undertaken.



NOW OFFERING PAYMENT ASSIST

Pay just 25% of your bill today
Spread the remaining cost over the next 3 months
NO FEE NO INTEREST NO CATCH



www.newgarageharnhamltd.co.uk

RAC
Approved Garage

GRAY'S BESPOKE
STONE MEMORIALS
CARVING &
STUDIO INSCRIPTIONS

Creating memorials of
celebration and commemoration

for more information visit:
www.grays-stone-carving.co.uk

or call tel: 07766464048

Unit 2 Knowle Farm, Bowerchalke, SP5 5BP

Prince's Pet Care

Where pets are in Safe Paws



*Home from home dog boarding
and home visits for all pets*

*Reliable, established, local business
Fully licensed, Insured, Pet 1st Aid and Disclosure Checked*

www.princespetcare.co.uk
01722 718823

info@princespetcare.co.uk



**Improves soil
structure
Suppresses weeds
The PH is neutral
Easy to handle
Encourages good root growth
Increases moisture retention
Excellent for top mulching**



*This product has been tested over a period
of five years and has performed
to a high standard*

Delivered in sealed bags

CONTACT: JIM WEBB

**THE HOLLOW • BARBERS LANE • HOMINGTON
SALISBURY • SP5 4NL**

Tel: 01722 718611 • Mobile: 0781 841 8822

GRAY'S STONE
STONE CARVING
CARVING COURSES
STUDIO & TUITION

Learn to carve in a supportive
and encouraging environment.

for more information visit:
www.grays-stone-carving.co.uk
or call tel: 07766464048

Unit 2 Knowle Farm, Bowerchalke, SP5 5BP

ONEHUNDREDWORKS

one hundred works of art for sale

one hundred works of art for sale

WWW.ONEHUNDREDWORKS.COM

Claudine's Fitness FOR MEN AND WOMEN



Enjoy fitness routines designed specifically with you in mind in a fun, relaxed environment.

Claudine is a member of fitness professionals. As a certified instructor of pilates and HIIT, she teaches a variety of fitness classes for men and women of all ages and abilities.

Timetable

Monday	09:15	Fitness Pilates	Broadchalke Sports Hall
Monday	10:15	HIIT	Broadchalke Sports Hall
Monday	13:45	Pilates	Broadchalke Sports Hall
Monday	16:30	Pilates	Sixpenny Handley Village Hall
Monday	19:00	Better Backs	Bishopstone Village Hall
Tuesday	09:15	Pilates	Coombe Bissett Village Hall
Tuesday	14:00	Pilates	Radnor Hall
Tuesday	18:00	Fitness Pilates	Britford Memorial Hall
Tuesday	19:00	Pilates	Britford Memorial Hall
Wednesday	09:30	Better Backs	Bishopstone Village Hall
Wednesday	18:00	Pilates	Bishopstone Village Hall
Wednesday	19:00	HIIT	Bishopstone Village Hall
Wednesday	19:30	Pilates	Bishopstone Village Hall
Friday	09:15	Fitness Pilates	Broadchalke Sports Hall
Friday	11:00	Pilates	Bowerchalke Village Hall

Pilates - Improves balance, flexibility, core and back strength, and joint mobility.

Pilates for Better Backs (Better Backs) - Focuses on the back, hips and buttocks.

Fitness Pilates - Claudine's best of all disciplines, but not as intensive as HIIT.

High Intensity Interval Training (HIIT) - Getting you fitter faster without equipment.

Encouragement and achievement together

For more information call Claudine on 07788 587937

PARKER BULLEN

SOLICITORS

Private Client

Helping you plan for your family's future,

including:-

- **Preparation of Wills**
- **Administration of Estates**
- **Lasting Powers of Attorney and General Powers of Attorney**
- **Setting up and Administration of Trusts**
- **Income Tax Advice and Returns**
- **Capital Gains and Inheritance Tax Planning**

We are currently offering a **10% discount** on our standard fees for Wills to all those who quote "**STaB Parish Magazine**" when booking an appointment with our Private Client team.

Home visits in the local area available on request.

Salisbury Office

www.parkerbullen.com

Andover Office

Tel: 01722 412 000

Twitter: @ParkerBullen

Tel: 01264 400 500

Sarah's Garden Services

Need help with your garden?



**Weeding, Planting, Mowing, Pond/Greenhouse Cleaning,
Holiday Watering etc**

No job too small!

07971 909 548

mygardenservices@outlook.com

Bishopstone based.

Wessex Contract Services

*Fencing, Landscaping,
Ground Care & Maintenance*

Lee Curtis

Tel: 01722780842

Mob: 07875018317

Email: lee@wessexcontractservices.co.uk



GRAHAM DIMMER MOT CENTRE

MOT Tests on all types of vehicle up to 3,500kg

Servicing & General Repairs on all makes & models

Specialist vehicle diagnostics

Air Conditioning Repairs & Re-gassing

Electronic Wheel Alignment

Free Courtesy Car

01722 328344

Avon House, Newton Road, Churchfields, Salisbury, Wilts SP2 7QA

Email: info@grahamdimmermot.co.uk

www.grahamdimmermot.co.uk

S. WALLWORTH ELECTRICAL SERVICES LTD

FULLY QUALIFIED ELECTRICIAN, EMERGENCY REPAIRS

INSTALLATIONS – RE-WIRES, ELECTRICAL REPAIRS & TESTING

EXTRA SOCKETS & LIGHTING, NIGHT STORAGE HEATING, ELECTRIC SHOWERS

DOMESTIC & COMMERCIAL



FREE QUOTATIONS.

SIMON WALLWORTH

31 DEAN LANE, SIXPENNY HANDLEY

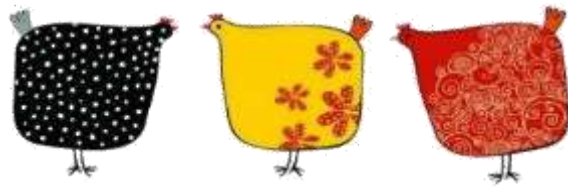
SALISBURY, WILTSHIRE

SP5 5PA

TEL: 01725 552545 MOB: 07826 928759

S.WALLWORTH@HOTMAIL.CO.UK

NEWBOURNE FARM



COMPOSTING

A local, family run business based in Rockbourne since 1995, offering green waste disposal and the sale of top quality accredited topsoil and compost.

On site processing of materials produces excellent screened 10mm top soil, landscaping compost for domestic and commercial use and agricultural spec compost.

Local delivery available for bulk bags or loose loads.

For more information about our products please contact

Rod 01725 518673 / 07896 544197 or

Andy 07766 163203

www.newbournecompost.co.uk

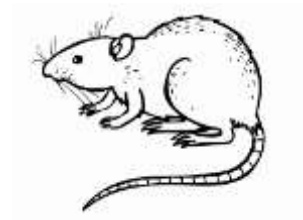




BASED IN FOVANT

01722 714308
07541 358570

- Local
- BPCA trained
- RSPH qualified
- Sensible pricing
- Fully insured
- Reliable
- Discreet
- Evening & weekends



www.greystonespestcontrol.com

michael@greystonespestcontrol.com



The White Horse

at Quidhampton



The White Horse at Quidhampton offers excellent food, friendly service, delicious wines and top-quality ales in a traditional village pub environment, where we believe in old-style pub values.

- 3 CASK ALES, WITH TWO EVER CHANGING GUESTS
- LOCALLY SOURCED INGREDIENTS FROM LOCAL SUPPLIERS
- HOME COOKED MENU OF TRADITIONAL PUB FAVOURITES
- DELICIOUS SUNDAY ROASTS SERVED EVERY WEEK
- MONTHLY CHARITY QUIZ NIGHT (1ST THURSDAY)
- LOG BURNER, BEER GARDEN AND CAR PARK
- FUNCTION ROOM & SKITTLE ALLEY FOR HIRE
- PARTIES, GATHERINGS & FUNCTIONS CATERED FOR



FOR RESERVATIONS OR MORE INFORMATION CALL 01722 744448
OR VISIT OUR WEBSITE

WWW.QUIDHAMPTONWHITEHORSE.CO.UK



LITTLE BANKSIDE

www.littlebankside.co.uk

Do you need extra space for visiting family & friends?
Self contained studio holiday let for 2 in Bishopstone.

Contact:
Hilary King
littlebankside@gmail.com
01722 780017

MADDY'S MENDING

ALL ALTERATIONS AND MENDING, FROM
BUTTONS TO BLINDS, CURTAINS TO CUSHIONS

No JOB Too Small!!!

CALL MADDY ON: 01725 519504 OR
0777 4207 423

FREE COLLECTION AND DELIVERY



SP Restoration

Antique Restorers

We offer our customers a specialist service in

Antique restoration, French polishing, Veneering, Complete table re-polishing, Wood turning and Desk leather inserts.

We have a fast chair repair service, we offer a collection and delivery service with free estimates. You're welcome to come visit us at our workshop:

Unit 1 St Martin's Workshops
Manor Farm
Fifield Bavant
Broadchalke, SP5 5HT

01722 780584



Advertising Rates

STaB - The Parish Magazine for the villages of Stratford Tony and Bishopstone

2020 Advertising rates – based on A5 page

STaB is delivered to around 300 houses in the parish, so your advert will reach many homes in the Chalke Valley. STaB is also published on the Bishopstone Village website: www.bishopstone-salisbury.co.uk

Price per year: 10 editions (Aug/Sept & Dec/Jan are joint editions)

Occasional adverts can be paid for at a pro-rata rate (1/10th of the annual rate per issue)

Full page 13x19cm £110 per annum	Half page 13x9.5cm £60 per annum	Quarter page Portrait 6.5x9.5cm £30 per annum	Quarter page Landscape 13x5cm £30 per annum
------------------------------------------------------	------------------------------------------------------	----------------------------------------------------------------------	-----------------------------------------------------------------

How to place your ad in STaB

1. Make a .pdf, .jpeg, or Word file of your ad, making sure it is the correct dimensions for publication (see table of sizes and prices above) and that it will reproduce well in black and white.
2. E-mail the file to Rachael Dew (ads.stab@gmail.com), stating what size of ad you would like, and how long you would like it to run for.
3. The deadline for publication is 5pm on the 20th of each month. Please send ads as early as possible.
4. When you have placed your order, you will receive an invoice with details of payment by cheque or bank transfer. Please pay within 14 days. Donations always welcome.
5. The Editor reserves the right to edit all contributions.

BISHOPSTONE PARISH COUNCIL

Councillors	Telephone
John Gibbon (Chairman)	01722 718551
Ali Thorne (Vice Chairman)	07768514133
Norman Barter	01722 780471
George Brutton	01722 718539
Anita Smith	01722 781213
Piers Edwards	01722 780079
Michelle Tatner	07968 842525
Parish Clerk	
Mike Ash Lower Thatch Flamstone Street Bishopstone SP5 4BZ	01722 781044 bishopstoneclerk@btinternet.com
Further information is on the village website: www.bishopstone-salisbury.co.uk	

THE VILLAGE HALL COMMITTEE MEMBERS

Chairman - Norman Barter	780471
Treasurer - Francis Taylor	780316
Entertainments - Sue Taylor	780316
Event bookings - Caroline Ash	781044
Hall bookings - Margaret Barter	780471
Hall maintenance - Nigel Peasley	780713
Minute secretary - Virginia Middleton-Smith	780444
Member - Pat Abbott	780002

The Village Hall is an important resource and offers a venue for a wide variety of events for the benefit of all. The Hall is supported by a large group of dedicated local people in addition to the Committee. We hope you will support events whenever you can and if you would like to join the wider group of Friends of the Village Hall then please contact any member of the committee.

Bishopstone Village Website

www.bishopstone-salisbury.co.uk

The village website carries a wealth of information about Bishopstone. There are pages devoted to the church, the Parish Council, what's on at the Village Hall, meetings, clubs, local organisations and village walks. There are even digital copies of this magazine.

If you want to have any information included on the website please contact either

Mike Ash (bishopstoneclerk@btinternet.com)

Or Roger Stockton (rogerstockton@icloud.com)

Bishopstone Area Covid Co-ordinators

Name	Part of village	Telephone Numbers
Jane Peasley	Croucheston	07746 573391
Jane Stocker		07761 805469
Amber Cotton	Flamstone Street	07515 807251
Dani Humphrey		07811 117453 01722 781056
Sarah Brough	Netton Street and Netton Island	07825 442110 01722 780684
Cally Edwards Piers Edwards	Butt Lane, Netton Close and Stanley Close	01722 780079 07968 797168
Kate Pendlenton Rob Pendlenton	The Croft and Harvest Lane	01722 780655 07769 202200
Sarah Brough	The Styles	07825 442110 01722 780684
Michelle Tatner	Pitts Lane and High Road	07968 842525
Jan Goodfellow	Whitlock Rise and Meadow View	07919 376814 01722 719045
Sarah Blank	Faulston	01722 780664
Nicky Rigg	Manor Farm and Throope	07786 806914
Olivia Wilson	Blandford Road	07773 844825

Please contact your Co-ordinator if you need help with shopping etc, or to arrange for prescriptions to be collected from Sixpenny Handley. If you are unable to reach the Co-ordinator for your part of the village, and the matter is urgent, please phone one of the others who will try to help. Please do not leave a message if you need help urgently in case your coordinator cannot get back to you in time.

Letters to the Editor

Letters to STaB are very welcome, but the views expressed may not be those of the editorial team or the Parish Church Council.

THANK YOU:

To the editors of STaB who regularly produce an excellent publication.

To our team of Area Co-ordinators for all the help and support they give to our calls - from my personal experience it has always been most helpful and willingly given.

To those who so kindly collect our medication from Handley and deliver it to our doors. This has been a great help.

To friends and family who care for us, visit, do shopping, we are so grateful.

Colin Everett

Another thank you from a local resident - Chris the paper man (Andy Van) is a 'quiet star' of our village. He has offered help to many over the past months, keeps an eye on the elderly, and always goes the extra mile to make sure that people get their newspapers, even when deliveries are interrupted by protests in London!



Hester Kirkham and some of the residents of Flamstone Street.



Services in Chalke Valley Benefice - October 2020

BCP = Book of Common Prayer (Traditional Language), CW = Common Worship (Contemporary Language)



Pattern of services for the re-opening of our churches for public worship. Please note that if the Covid 19 situation changes, these service details might also change. Please check your church noticeboard and weekly e-bulletin

4 October 17th Sunday after Trinity	9.30am	Harvest Festival Communion	Britford	Jenny Taylor
	9.30am	Harvest Festival Communion	Broad Chalke	Roger Leake
	11.00am	Harvest Festival Communion	Ebbesbourne Wake	Roger Leake
	11.00am	Harvest Festival Communion	Bishopstone	Jenny Taylor
	11.00am	Harvest Festival	Odstock	Anna-Claar T-Rosingh
	6.00pm	Harvest Festival	Homington	Jenny Taylor
11 October 18th Sunday after Trinity	9.30am	Family Communion (CW)	Nunton	Anna-Claar T-Rosingh
	9.30am	Parish Communion (CW)	Bowerchalke	Roger Leake
	11.00am	Morning Prayer (BCP)	Charlton All Saints	Lay Led
	11.00am	Harvest Festival	Coombe Bissett	Jenny Taylor
	11.00am	Harvest Festival	Alvediston	Biddy Trahair
	3.00pm 6.00pm	Harvest Festival Harvest Festival	Fifield Bavant Berwick St John	Roger Leake Roger Leake
18 October LUKE THE EVANGELIST	9.30am	Parish Communion (CW)	Odstock	Anna-Claar T-Rosingh
	9.30am	Parish Communion (CW)	Bishopstone	Jenny Taylor
	11.00am	Parish Communion (CW)	Berwick St John	Jenny Taylor
	11.00am	Morning Prayer (BCP)	Ebbesbourne Wake	Biddy Trahair
	11.00am	Harvest Festival Communion	Bowerchalke	Roger Leake
	11.00am	Parish Communion (CW)	Homington	Anna-Claar T-Rosingh
25 October Last Sunday after Trinity BST ENDS	9.30am	Parish Communion (CW)	Charlton All Saints	Jenny Taylor
	9.30am	Family Communion (CW)	Broad Chalke	Roger Leake
	11.00am	Family Communion (CW)	Coombe Bissett	Jenny Taylor
	11.00am	Family Service	Nunton	Adrian Taylor
	11.00am	Holy Communion (BCP)	Alvediston	Bishop of Salisbury
1 November ALL SAINTS DAY	9.30am	Parish Communion (CW)	Broad Chalke	Catherine Blundell
	9.30am	Parish Communion (CW)	Britford	Jenny Taylor
	11.00am	Parish Communion (CW)	Ebbesbourne Wake	Catherine Blundell
	11.00am	Family Communion (CW)	Coombe Bissett	Jenny Taylor
	11.00am	Morning Service	Odstock	Anna-Claar T-Rosingh

Ministry Team: Team Rector - The Revd Catherine Blundell: 01722 780134
 Team Vicars - The Revd Canon Jenny Taylor: 01722 503081, The Revd Dr Anna-Claar Thomasson-Rosingh: 01722 238267
 Curate - The Revd Roger Leake: 07947149456 Licensed Lay Minister - Mr David Blundell: 01722 780134
 Team Administrator - Mrs Emily Broomhead: 07890 262376
 URC Ministers - The Revds Ana & Tod Gobledale 01722 330980, The Revd Jackie Lowe: 01722 780008

Assisting Ministers: The Revd Canon Ann Philp: 01722 555178, The Revd Kate Rosslyn Smith: 01722 780011

Lay Worship Leaders: Yvonne & Kevin Follett: 01747 828785, Caroline Lamb: 01722 780789, Sally Leaver: 01722 780447,
 Naomi Martin: 07713031774, Don Morgan: 01722 718557, Richard Morgan: 01722 338868, Adrian Taylor: 01722 325862, Gill Riley: 01722 780538,
 Janet Roe: 01725 519242, Biddy Trahair: 01722 780666, Rhoderick Voremberg: 07785 304142, James Wardroper: 01722 718152

Puzzle page answers: GAFDEBHC

Mrs Smith was 18 and Mr Smith was 54 on their wedding day

ALL PIT TOP MEN ROB

If there are any problems with the delivery of STaB please contact Sue Porter on porter1totalserve@gmail.com or 01722 780459.